

# 13th Conference of the European Sociological Association

(Un)Making Europe:  
Capitalism, Solidarities,  
Subjectivities



POCKET VERSION  
PROGRAMME BOOK

# 13th Conference of the European Sociological Association

(Un)Making Europe:  
Capitalism, Solidarities,  
Subjectivities

POCKET VERSION  
PROGRAMME BOOK



# 13th Conference of the European Sociological Association

(Un)Making Europe:  
Capitalism, Solidarities,  
Subjectivities



European  
Sociological  
Association



HELLENIC  
SOCIOLOGICAL  
SOCIETY

Athens | 29 August – 01 September 2017  
ESA 13th Conference | (Un)Making Europe: Capitalism, Solidarities, Subjectivities |  
<http://esa13thconference.eu/>  
Organisers | European Sociological Association | <http://www.europeansociology.org/>  
Hellenic Sociological Society | <http://www.hellenicsociology.gr/el/content/1>  
Graphic Design | Dimitris Fragoulakis | e-mail: [dfragoul@yahoo.gr](mailto:dfragoul@yahoo.gr)  
© European Sociological Association, 2017  
The conference agenda and the room allocation has been executed by ESA

(Un)Making Europe: Capitalism, Solidarities, Subjectivities  
13th ESA Conference | Athens | 29.08.2017 – 01.09.2017

Europe can be made or unmade, and this is especially true since the 'Great Recession' of 2008. European society, and even the very idea of Europe, is under threat.

**First**, the inherent contradictions of **capitalism** are obviously stronger than we thought: Greece, where the emphatic idea of "Europe" originated, has experienced severe austerity measures; Europe has seen a deepening of neo-liberal politics, threats to what remains of the welfare state and increasing inequality. **Second, solidarities** are fragmented in and between societies across Europe. The new world economic crisis formed a context for both the constitution and the undermining of solidarities. On the one hand, from the Arab Uprisings to the various Occupy and Indignados movements – and their manifestations at the level of political parties – we have seen rebellions by citizens demanding political change. On the other hand, refugees fleeing wars have been denied human rights and their lives have been threatened by the closure of borders and the lack of a coordinated European strategy. **Third, subjectivities** are formed that do not only result in resistance and protest, but also in apathy, despair, depression, and anxiety. Authoritarianism, nationalism, racism, xenophobia, right-wing extremism, spirals of violence, and ideological fundamentalisms have proliferated throughout the world, including in Europe.

As a result, the promise of Europe and the geographical, political, and social borders of Europe have been unmade and this 'unmaking' poses a profound challenge for sociology and the social sciences more generally. It is in this context that the European Sociological Association's 2017 Conference takes place in Athens at the epicentre of the European crisis. The **underlying question** for the conference is:

---

---

*How and where to should a sociology that matters evolve? How can sociology's analyses, theories and methods, across the whole spectrum of ESA's 37 Research Networks and various countries, be advanced in order to explain and understand capitalism, solidarities and subjectivities in the processes of the making, unmaking and remaking of Europe?*

---

---



# Table of Contents

13 <sup>th</sup> ESA Conference .....	5
Table of Contents .....	7
The President's Welcome.....	9
The LOC Chair's Welcome.....	11
The Rector of Panteion's Welcome .....	13
The Rector of Harokopio's Welcome .....	15
Organisers and Committees .....	16
List of ESA Research Networks.....	19
List of ESA Research Streams .....	23
Sponsors .....	25
Exhibitors .....	26
Conference Information .....	27
Venues & Access .....	29
Further Details .....	30
Useful Information .....	31
Venues Blueprints .....	33
Coffee Break & Lunch Details .....	38
Conference Schedule .....	39
Types of Sessions .....	40
Meetings & Assemblies .....	41
ESA General Assembly.....	42
Opening Ceremony & Opening Plenary.....	43
Special Evening Plenary.....	47
Closing Ceremony and Closing Plenary .....	49
Summary Table of Semi-Plenary Sessions.....	53
Semi-Plenary Session .....	54



30.8 Wednesday

SP01: The Structural Transformation of Europe's Public Sphere in the Age of Extremes.....	54
SP02: Migration in Times of Europe's Economic Crisis.....	57
SP03: The Sociology of Sustainable Food Consumption.....	58
SP04: Questioning Boundaries of Age and Place: Child Refugees in an Uncertain Europe.....	59
SP05: Anatomy of the Greek Crisis.....	61
SP06: (Un)Making Europe.....	62
SP07: (Un)Making Capitalism.....	64
SP08: (Un)Making Solidarities.....	66
SP(09): (Un)Making Subjectivities.....	68

01.09 Friday

SP10: Right Wing Extremism and Islamist Extremism in Europe: Similarities and Differences.....	70
SP11: Care Labour and Affective Labour in the Global Care Chain.....	71
SP12: The Transformation of Capitalism in Eastern Europe.....	73
SP13: Public Sociology and Public Intellectuals in Times of Europe's Crisis.....	74
Summary Table of Mid-Day Specials.....	77
Mid-Day Specials.....	78
Research Networks & Research Stream Sessions.....	95
PhD Summer School 2017.....	96
ESA Candidates 2017 – 2019.....	97
INDEX.....	110

## The President's Welcome



*Make this meeting matter.* The relevance of the theme, world-famous keynote speakers, holding in Greece the debate on *(Un)Making Europe* which stresses the overreliance on *capitalism*, austerity measures and evaporating *solidarities* in Europe, are necessary, but in practice not sufficient for a successful conference. Make our exchanges relevant, with your presentation, pointed questions and, on the part of session chairs, by the strong encouragement of stimulating discussions!

*Sociology.* The project of questioning reality began in Greece, and sociology from the start shared in this task of highlighting dominant forms of understanding in societies (and science) that limit knowledge, by working towards more fitting kinds of understanding.

Sociologists have been analysing the negative impact of the Great Recession of 2008-9 on European societies, but which of the categories employed truly penetrate thought and action beyond our discipline? Microeconomics, austerity, and neoliberalism on the proactive side, nationalism, xenophobia, and right-wing extremism as forms on the reactive side both persist. While extreme intrasocietal inequalities are aggravated further by *intersocietal* imbalances (see wage dumping by 'strong' export economies) that no longer can be balanced with currency adjustments, mainstream microeconomics omits the "social". Consequently, current debates about proactive and reactive 'ideas' keep bolstering the political ontology of a Hobbesian (cultural, partly violent) war of all against all, thus subverting Emile Durkheim's call for a new "organic" *solidarity* in societies whose stability and integrity is threatened..

*ESA.* Despite our best intentions, even this community of 3500 delegates representing 77 countries probably will not save the world (not in one fell swoop). Our *subjectivities* increasingly are becoming subject to the spread of precarious careers, numeric research assessments, and tough competition for shrinking resources. For me, it is obvious that scholars must join forces to discuss and decide how to reanimate the idea and the practice of science as a group of peers.

ESA must provide spaces for free knowledge exchange. 37 ESA Research Networks (RN) selected papers by sociologists representing heterogeneous

fields and views. Bottom-up construction of new 'Research Streams' (RS) has been invited as well as, for the first time, bottom-up abstract submission for semi-plenaries. The ESA world is flat.

Countervailing the latter, the commercialisation of science has been marching forward, necessitating strong responses. First, to keep a set of journals in 'public' hands (against the dominant corporate ownership of journal titles). Secondly, to create a third ESA journal, 'European Sociological Debate,' which, if it receives the support of ESA RNs, National Associations and members, will facilitate a broader exchange of sociological thought beyond linguistic and regional boundaries within Europe. Thirdly, against the intensified 'innovation' rhetoric in EU research funding and shrinking social science resources, in collaboration with others, to develop a more active voice for social science in Europe and EU research policy.

In order to enable a less dependent, stronger, and active ESA, we are currently restructuring our conference and headquarters operations, and developed a new strategic plan, database, logo, and website. This is a bottom-up community for all sociologists. We are thrilled that you are here!

*Thank you.* No one could be here without the *enthusiastic work* around the clock by Apostolos G. Papadopoulos (Local Organisers), Dagmar Danko (ESA office), Athanasios Lakrintis (Harokopio), Nikos Leandros (Panteion), Andreia Batista Dias (ESA), Veronika Riedl, Thomas Caubet, Christine Frank (all ESA interns), as well as Christian Fuchs (Conference Committee) and all other members of the ESA Executive Committee including 100 RN/RS ESA coordinators. My sincerely thanks to all for making possible this conference!

Should you still yearn for more wisdom, take a walk up to the Acropolis! Enjoy ESAAthens 2017!

**Frank Welz**

President of the European Sociological Association

## The LOC Chair's Welcome



We are very proud to host the European sociological conference with a theme that strikes right at the heart of current discussions over the sustainability of a common European future. The (sub)theme with its triad of concepts signifies an interaction of forces that will define the future of Europe and its peoples.

The message of the conference theme is conveyed excellently by organizing this event in Greece which has been the main referent of the 2008/9 financial crisis and the 'European crisis' bound together. Therefore this conference states the urgent need to discuss, in depth, not simply the nuts and bolts of the multiple crises as well as their implications for the European citizens, but more importantly to explore the options and drivers connected to the remaking of the so-called 'European project'.

It is a brave move to take the responsibility of co-organizing this conference in Greece. By doing so, we manifested our intention to force academia and wider public in Greece into a wider dialogue over Europe and the quest for democratic solutions. Moreover, the strengthening of sociology as a discipline and sociological thinking have been major concerns in a country that moans under the burden of neoliberal policies and austerity measures. Responding to the excessive pressures of recession, inequalities, political realism, economic rationality and effectiveness, Greek academics and concerned citizens have often raised their claims over development, social justice, democracy, human rights and social resilience. These are also shared by many academics and others across Europe.

Despite the many challenges we faced during the preparation of this major conference, we discovered that the undertaking of our 'common European sociological project' was an exciting and rewarding experience through which many people were engaged and shared the objective of empowering sociologists and social scientists within a wider setting defined by regressive and utilitarian economic and political thinking. As we progressed with the organization of the event, we realized that there is a critical mass of people with whom we shared our vision, which has been an incentive for us to excel in tasks to get a pleasant event to all participants and followers.

The joint venue of the conference is offered by the two public universities collaborating in the organization of the conference. We are grateful to the

rectors and the staff in both universities for facilitating the success of the conference.

I owe special thanks to Frank Welz (Chair of the ESA), Christian Fuchs (ESA Conference Committee) and Dagmar Danko (ESA Executive Coordinator) for their collaboration. All the members of the Athens LOC have worked really hard for accomplishing the targets we set from the very beginning, but I would like to thank in particular to Nikos Leandros (LOC/ Panteion University), Maria Nikolaidou (LOC/ Harokopio University), Despina Papadopoulou (LOC/ Panteion University), George Mavrommatis (LOC/Harokopio University), Laoura Maratou-Alipranti (LOC), Athanasios Lakrintis (Harokopio University), Loukia-Maria Fratsea (Harokopio University), Aleka Theofili (Harokopio University), Nicos Kourachanis (Panteion University) and Georgina Stefou (PCO) for all the hard work to ensure the success of the conference. Finally, our endeavor would not materialize without the assistance of over 200 volunteers, the majority of whom come from the two universities.

I would like to express my warm welcome to each and everyone to the 13<sup>th</sup> ESA Conference in Athens!

**Apostolos G. Papadopoulos**

Chair of the Local Organising Committee

## The Rector of Panteion's Welcome



Distinguished Guests,

I welcome you cordially in our University for this very important conference about the present and future of Europe in this period of cataclysmic changes. The issues you are going to deal with are in the epicenter of the social, political and economic discussion in Europe today:

Greece, Spain, Portugal and Ireland have already experienced the “efficacy” of the proposed austerity measures and suffer under financial difficulties and brain drain.

The migration crisis has affected Italy, Greece and many other countries. In some cases we are witnessing xenophobic reactions towards refugees and/or immigrants.

New types of terrorism are threatening European capitals, thereby fostering a climate of instability.

Moreover our Europe is suffering from a profound identity crisis: Wide strata of its population question many European policies, nationalisms are on the rise, economic inequalities undermine every effort aiming at social cohesion.

I am confident that this conference with eminent speakers will provide the sociological discussion with added value and will give to the participants the opportunity to contribute to a better understanding of our problems.

Our University was founded in 1932 by the then Prime Minister Eleytherios Venizelos. It is entirely dedicated to the study and research of Social and Political Sciences. Many of its scholars and Professors have forged the respective disciplines and have played an active role in the public debates on crucial social, political and economic issues in our country.

It is therefore the right place at the right time to serve as a venue for the discussions about **(Un)Making Europe: Capitalism, Solidarities, Subjectivities**. I want to congratulate the organizers in Greece and abroad and especially Professor Dr. Frank Welz, President of the European Sociological Association and Professor Dr. Apostolos Papadopoulos, Chair of the Local Organising Committee of this Conference.

I am looking forward to meeting you all,

**Professor Ismini Kriari**

Rector at Panteion University of Social and Political Sciences

ESA 2017  
ATHENS

29.08

01.09



## The Rector of Harokopio's Welcome

Dear ESA participants,



The scientific community of Harokopio University of Athens welcomes you. Harokopio University is a public University, research-oriented in disciplines that have in their core the promotion of human life quality. The Schools of "Environment, Geography and Applied Economics", "Digital Technology" and "Health Science and Education" focus on improving the life of individuals, communities and societies. Our University constitutes a vibrant academic community, achieving high rankings for its research achievements at national and international level.

Athens is a landmark of the Greek civilization and democracy, celebrating the value of each one as a citizen. It is an example which highlights the obligation of citizens to actively participate in public affairs. Whether this is the ancient Greek city-state or the modern European state, this obligation still remains of great importance. To this end, the question raised in the 13th conference of the European Sociological Association, whether to "unmake" or "remake" Europe is crucial. Although the answer to this question might seem obvious, the promise of Europe to bring down geographical, political and social borders is "unmade". The path that will enable to "remake" the vision for a united Europe and open societies that promote solidarity and social growth is crucial essence of Europe on its own. Under the current circumstances, citizens, are obliged to become more involved, to collaborate with each other and contribute in the "remaking" of Europe. After all Europe is nothing but its citizens.

Sociology carries the burden to study these phenomena and promote the dialogue for solutions. Athens is the perfect place to open the discussion and will provide space to social scientists from around the world during the 13th ESA Conference. Ideas and suggestions will be exchanged regarding policies that will "remake" Europe.

Harokopio University is proud to contribute in this endeavor in cooperation with the European Sociological Association, the Hellenic Sociology Society and Panteion University. We hope you shall have a fruitful conference with plenary sessions, research sessions, research networks, PhD sessions, round tables and many other activities. Of course you shall also find the time to experience the monuments of Athens and feel the city's vibes.

Σας καλωσορίζουμε στην Αθήνα και το 13ο Συνέδριο της ΕΚΕ!

Welcome to Athens and to the 13th ESA conference!

**Maria Nikolaidou**

Rector of Harokopio University of Athens



## Organisers and Committees ESA Executive Committee

President: Frank Welz (Innsbruck)

Vice-Presidents: Laura Horn (Roskilde), Eleni Nina-Pazarzi (Piraeus), Sue Scott (York)

Conference Committee: Christian Fuchs (London), Chair, Nilay Çabuk Kaya (Ankara), Tomaš Kostelecky (Prague), Eleni Nina-Pazarzi (Piraeus), Frank Welz (Innsbruck)

Executive Committee Members:

Airi-Alina Allaste (Tallinn)  
Nilay Çabuk Kaya (Ankara)  
Elena Danilova (Moscow)  
Christian Fuchs (London)  
Kathrin Komp (Helsinki)  
Tomaš Kostelecky (Prague)  
Monica Massari (Naples)  
Ruth McDonald (Manchester)  
Lena Näre (Helsinki)  
Eleni Nina-Pazarzi (Piraeus)  
Helena Serra (Lisbon)  
Marta Soler-Gallart (Barcelona)  
Csaba Szalo (Brno)  
Laura Horn (Roskilde), Chair of the RN Council  
Sue Scott (York), Chair of the NA Council

### **ESA Headquarters Paris**

Coordinator: Dagmar Danko

Secretariat: Andreia Batista Dias (since 2017)

Gisèle Tchinda-Falcucci (until 2017)

Interns: Veronika Riedl, Thomas Caubet, Christine Frank

## Local Organising Committee

Chair: Apostolos G. Papadopoulos (Harokopio University)

Emmanouel Alexakis (University of Crete),  
Laoura Alipranti-Maratou (National Centre for Social Research)  
Nicolao Demertzis (University of Athens/National Centre for Social Research)  
Constantinos Dimoulas (Panteion University)  
Theodoros Fortsakis (University of Athens)  
Christina Karakioulafi (University of Crete)  
Charalambos Kasimis (Agricultural University of Athens)  
Thomas Koniavitis (Panteion University)  
Sokratis Koniordos (University of Crete)  
Maria Koussis (University of Crete)  
Ismini Kriari (Panteion University)  
Alexandros-Andreas Kyrtis (University of Athens)  
George Mavrommatis (Harokopio University)  
Nicos Mouzelis (London School of Economics and Political Science)  
Maria Nikolaidou (Harokopio University)  
Eleni Nina-Pazarzi (University of Piraeus)  
Despina Papadopoulou (Panteion University)  
Maria Petmesidou (University of Thrace)  
Constantinos Phellas (University of Nicosia, Cyprus)  
George Pleios (University of Athens)  
Chryssa Sofianopoulou (Harokopio University)  
Theodoros Sakellaropoulos (Panteion University)  
Evangelia Tastsoglou (Saint Mary's University, Canada)  
Nicolao Tatsis (University of Athens)  
Joanna Tsiganou (National Centre for Social Research)  
Chryssa Zachou (Deree College, Athens)



## List of ESA Research Networks

<b>ESA Research Networks</b>	<b>Coordinator/Co-coordinator</b>
RN01 - Ageing in Europe	Bernhard Weicht, bernhard.weicht@uibk.ac.at Dirk Hofäcker, dirk.hofaecker@uni-due.de
RN02 - Sociology of the Arts	Sacha Kagan, sachakagan2@gmail.com Anna Lisa Tota, annalisa.tota@uniroma3.it
RN03 - Biographical Perspectives on European Societies	Kaja Kaźmierska, kajakaz@uni.lodz.pl Ina Alber, ina.alber@sowi.uni-goettingen.de
RN04 - Sociology of Children and Childhood	Nigel Thomas, NPTThomas@uclan.ac.uk Griet Roets, Griet.Roets@UGent.be
RN05 - Sociology of Consumption	Margit Keller, margit.keller@ut.ee Terhi-Anna Wilska, terhi-anna.wilska@jyu.fi
RN06 - Critical Political Economy	Mònica Clua-Losada, monica.clualosada@utrgv.edu Angela Wigger, a.wigger@fm.ru.nl
RN07 - Sociology of Culture	Trever Hagen, t.hagen@exeter.ac.uk Joost van Loon, joost.vanloon@kueichstaett.de
RN08 - Disaster, Conflict and Social Crisis	Antti Silvast, antti.silvast@ed.ac.uk Eugenia Petropoulou, petrope@uoc.gr
RN09 - Economic Sociology	Sebastian Koos, Sebastian.Koos@uni-konstanz.de Olga Ivashchenko, olgivash@gmail.com
RN10 - Sociology of Education	Vasiliki Kantzara, v.kantzara@gmail.com Mieke van Houtte, mieke.vanhoutte@ugent.be
RN11 - Sociology of Emotions	Stina Bergman Blix, stina.bergmanblix@sociology.su.se Jonathan G. Heaney, jonathangheaney@gmail.com
RN12 - Environment & Society	Monika Verbalyte, monika.verbalyte@fu-berlin.de Matthias Gross, matthias.gross@ufz.de
RN13 - Sociology of Families and Intimate Lives	Audrone Telesiene, audrone.telesiene@ktu.lt Isabella Crespi, isabella.crespi@unimc.it Detlev Lueck, detlev.lueck@bib.bund.de

RN14 - Gender Relations in the Labour Market and the Welfare State	Hazel Conley, Hazel.Conley@uwe.ac.uk Emma Calvert, e.calvert@qub.ac.uk
RN15 - Global, transnational and cosmopolitan sociology	Pertti Alasuutari, pertti.alasuutari@uta.fi Marco Caselli, marco.caselli@unicatt.it
RN16 - Sociology of Health and Illness	•Jonathan Gabe, j.gabe@rhul.ac.uk Angela Genova, angela.genova@uniurb.it
RN17 - Work, Employment and Industrial Relations	Bernd Brandl, bernd.brandl@durham.ac.uk Valeria Pulignano, valeria.pulignano@soc.kuleuven.be
RN18 - Sociology of Communications and Media Research	Roy Panagiotopoulou, rpanag@media.uoa.gr Romina Surugiu, rominasurugiu@yahoo.com Marisol Sandoval, Marisol.Sandoval.1@city.ac.uk
RN19 - Sociology of Professions	Teresa Carvalho, teresa.carvalho@ua.pt Christiane Schnell, ch.schnell@em.uni-frankfurt.de
RN20 - Qualitative Methods	Gerben Moerman, gmoerman@uva.nl Lukas Marciniak, l.t.marciniak@gmail.com
RN21 - Quantitative Methods	Wolfgang Aschauer, wolfgang.aschauer@sbg.ac.at Jolanta Perek-Bialas, jolanta.perek-bialas@uj.edu.pl
RN22 - Sociology of Risk and Uncertainty	Aiste Balzekiene, Aiste.balzekiene@ktu.lt
RN23 - Sexuality	Chiara Bertone, chiara.bertone@uniupo.it Zowie Davy, zowie.davy@dmu.ac.uk
RN24 - Science and Technology	Harald Rohracher, harald.rohracher@liu.se Inge van der Weijden, i.c.m.van.der.weijden@cwts.leidenuniv.nl
RN25 - Social Movements	Katrin Uba, katrin.uba@statsvet.uu.se Lorenzo Bosi, lorenzo.bosi@sns.it
RN26 - Sociology of Social Policy and Social Welfare	Janne Paulsen Breimo, Janne.Iren.Paulsen.Breimo@uin.no Ingo Bode, ibode@uni-kassel.de
RN27 - Regional Network Southern European Societies	Luis Baptista, luisv.baptista@fcsh.unl.pt Eleni Nina-Pazarzi, enina04@yahoo.gr
RN28 - Society and Sports	Koen Breedveld, k.breedveld@mulierinstituut.nl
RN29 - Social Theory	Marta Soler-Gallart, marta.soler@ub.edu Craig Browne, craig.browne@sydney.edu.au

RN30 - Youth & Generation	Valentina Cuzzocrea, valentina.cuzzocrea@uni-erfurt.de Sanna Aaltonen, Sanna.aaltonen@nuorisotutkimus.fi
RN31 - Ethnic Relations, Racism and Antisemitism	Karin Stoegner, karin.stoegner@univie.ac.at Kim Robin Stoller, robin.stoller@iibsa.org
RN32 - Political Sociology	Virginie Van Ingelgom, virginie.vaningelgom@gmail.com Ov Cristian Norocel, cristian.norocel@helsinki.fi
RN33 - Women's and Gender Studies	Maria Carmela Agodi, agodi@unina.it Michael Meuser, michael.meuser@tu-dortmund.de
RN34 - Sociology of Religion	Gladys Ganiel, G.Ganiel@qub.ac.uk Roberta Ricucci, roberta.ricucci@unito.it
RN35 - Sociology of Migration	Karin Peters, Karin.Peters@wur.nl Elise Pape, elise.pape@ehess.fr Kenneth Horvath, horvath@ph-karlsruhe.de
RN36 - Sociology of Transformations: East and West	Elena Danilova, endanilova@gmail.com Matej Makarovič, matej.makarovic@fuds.si Arkadiusz Peisert, wnsap@univ.gda.pl
RN37 - Urban Sociology	Ligia Ferro, ligia_ferro@hotmail.com Marta Smagacz-Poziemska, marta.smagacz-poziemska@uj.edu.pl M. Victoria Gómez, mgomez@polsoc.uc3m.es



## List of ESA Research Streams

### ESA Research Networks

### Coordinator/Co-coordinator

RS01 - Conference Stream (Un)Making Europe (Un)Making Capitalism (Un)Making Solidarities  (Un)Making Subjectivities	Members of the Executive Committee: Kathrin Komp, Tomáš Kostelecký, Csaba Szaló Christian Fuchs, Elena Danilova, Laura Horn Airi-Alina Allaste, Nilay Çabuk Kaya, Marta Soler Monica Massari, Lena Näre, Sue Scott
RS07 - Greece and the European Socioeconomic Crises	Sokratis Koniordos, koniords@uoc.gr Apostolos G. Papadopoulos, apospapa@hua.gr Anna Lisa Tota, annalisa.tota@uniroma3.it
RS08 - Memory Studies: The Arts in Memory	Trever Hagen, t.hagen@exeter.ac.uk Siobhan Kattago, siobhan.kattago@gmail.com Irit Dekel, iritdekel@gmail.com
RS11 - Sociology of Celebration	Ismo Kantola, ikantola@utu.fi Mihai Stelian Rusu, mihai.rusu@ulbsibiu.ro
RS12 - Sociology of Knowledge	René Tuma, rene.tuma@tu-berlin.de Mathias Blanc, mathias.blanc@univ-lille3.fr Sasa Bosancic, sasa.bosancic@phil.uni-augsburg.de Hubert Knoblauch, hubert.knoblauch@tu-berlin.de Michaela Pfadenhauer, michaela.pfadenhauer@univie.ac.at Bernt Schnettler, schnettler@unibayreuth.de
RS13 - Sociology of Law	Eleni Nina-Pazarzi, enina04@yahoo.gr, enina@unipi.gr Nikolaos Intzessiloglou, nintze@law.auth.gr Aspasia Tsaoussi, atsaoussi@law.auth.gr
RS14 - Sociology of Morality	Wojciech J. Sobolewski, wojciech.j.sobolewski@gmail.com Marta Bucholc
RS15 - Visual and Filmic Sociology	Jean-Pierre Durand, jpd.durand@gmail.com Christine Louveau, ch.louveau@gmail.com Luca Queirolo Palmas, luca.palmas@unige.it



RS16 - What turns the European labour market into a fortress?	Joyce Sebag, joyce.sebag@gmail.com Hans Siebers, h.g.siebers@uvt.nl Bridget Anderson Alice Bloch Patrizia Zanoni
RS17 - 100 Years Charles Wright Mills: Sociological Imagination Today	Konstantin Minoski, konstantin@fzf.ukim.edu.mk Roland Pfefferkorn, roland.pfefferkorn@unistra.fr

## Sponsors

ESA and the LOC would like to express their gratitude to the sponsors for providing their support to the organisation of 13th Conference of the European Sociological Association. A list of the Conference sponsors is provided below:

Under the auspices of



HELLENIC REPUBLIC  
**MINISTRY OF TOURISM**



HELLENIC REPUBLIC  
Secretariat General for  
Media & Communication



[www.visitgreece.gr](http://www.visitgreece.gr)



HELLENIC REPUBLIC  
REGION OF ATTICA



CITY OF ATHENS



ATHENS - MACEDONIAN  
NEWS AGENCY

Conference Sponsors



Organization in Special Consultative Status with  
the United Nations Economic & Social Council (UN-ECOSOC)  
Associated with the United Nations Department of Public Information (UN DPI)

ROWMAN &  
LITTLEFIELD  
INTERNATIONAL



nature  
sustainability

Panteion University Sponsors



HELLENIC PARLIAMENT



HELLENIC  
PETROLEUM

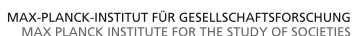
Communication Sponsor



ΠΡΩΤΟ ΠΡΟΓΡΑΜΜΑ  
91,6 • 105,8  
ΕΛΛΗΝΙΚΗ ΡΑΔΙΟΦΩΝΙΑ

## Exhibitors

ESA and the LOC would like to express their sincere thanks to the exhibiting publishers for their support and for participating to the 13th Conference of the European Sociological Association. An exhibitors list is provided below:



*The exhibition is located in the Atrium of Panteion University.  
The exhibition is open during the entire conference.*

## Conference Information

**Opening Ceremony | MEGARON Athens Concert Hall** | Vas. Sofias Ave. & Kokkali str. / Metro Line 3/Blue Line: station “Megaron” (Athens Concert Hall)

**Panteion University** | 136 Syggrou Ave. | Metro Line 2/Red Line: Station “Syggrou-Fix”

**Harokopio University** | 70 El. Venizelou str. | Metro Line 1/Blue Line: Station “Tavros”

**Athenaeum InterContinental Hotel** | 89-93 Syggrou Ave. | Metro Line 2/Red Line Station “Syggrou-Fix”

**Closing Party | SNFCC – Stavros Niarchos Foundation Cultural Center/Closing Party** | 364 Syggrou Ave., 176 74 Kallithea | Lines B2, 550\*: Getting off at the Stop “Onasseio” on Syggrou Ave. southbound, head south in the direction of the sea, up to Evripidou str. (junction with Syggrou Ave. by-lane)

### Conference Website & Social Media Accounts

**Website:** <http://esa13thconference.eu/>

**Facebook:** <https://www.facebook.com/esa2017athens/?fref=ts>

**Twitter:** <https://twitter.com/esa2017athens>

**Instagram:** <https://www.instagram.com/esa2017athens/>

**YouTube:** <https://www.youtube.com/channel/UCBwVQjbYosWD49c1Cfo9sBw>

**LinkedIn:** <https://www.linkedin.com/in/esa-athens-b2b540135>

**Google+:** <https://plus.google.com/108008625791775702976>

### Contacts

**Panteion University** | [n.kourachanis@gmail.com](mailto:n.kourachanis@gmail.com)

**Harokopio University** | [fratsea@hua.gr](mailto:fratsea@hua.gr), [alex.theofili@hua.gr](mailto:alex.theofili@hua.gr)

**Athenaeum InterContinental Hotel** | [sarantis.nikolovienis@ihg.com](mailto:sarantis.nikolovienis@ihg.com)

### Internet Connection at the Faculties

**Panteion University** | Network: Panteio-wifi & Password: [pantei@n123](mailto:pantei@n123)

**Harokopio University** | Network: Hua-University & Password: Kallithea | Network: [hua\\_campus\\_wifi](#) & Password: [hu@c@mpus](#) | Network: [hua-wif](#) & Password: [hua\\_2011](#)

**Athenaeum InterContinental Hotel** | Network: InterConti Meetings | When in Conference rooms, open the browser and the hotel page comes up | Insert, room number and name (or the code 3008 if you are not staying at the hotel), check the words "I agree" and click on "Submit".

**SNFCC – Stavros Niarchos Foundation Cultural Center** | Network: SNFCC-FREE-WIFI - Password: Free Access

### Copy & Print Center

**La Chouette (next to Panteion University)** | Address: 16 Alexandros Pantos str., 176 71 Kallithea | Working hours: 08:00-20:00 Mo-Fr | Contact number: +30 210 9217071 | Payment: in Cash

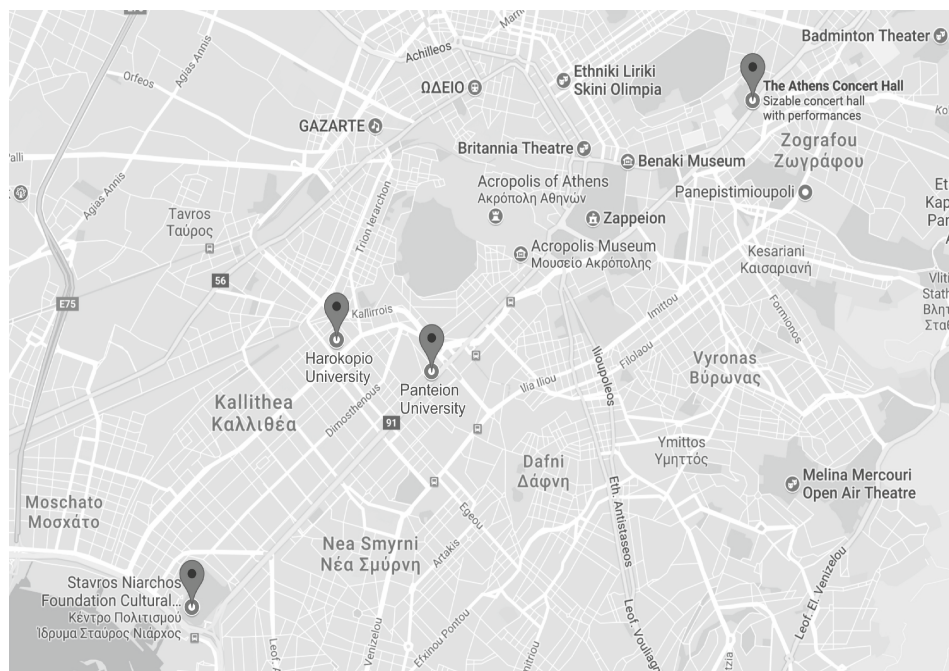
**Print and copy Center** (near Harokopio University) | Address: 62 El. Venizelou str., 176 76 Kallithea | Working hours: 08:30-18:00 Mo-Fr | Contact number: +30 210 9577378 | Payment: in Cash

### Transfers

Shuttle buses connecting Panteion University and Harokopio University will be available every 20 minutes for all participants. Departure point is the main entrance of each campus. For further details, please check the timetable below:

**Wednesday 30.08** | Panteion University - Harokopio University | 12:30 - 19:30

**Thursday 31.08** | Panteion University - Harokopio University | 08:15 - 20:00



## Venues & Access

**Panteion University** /Conference Venue | 136 Syggrou Ave., 17671 Athens, Greece | Metro Line 2/Red Line: “ Station” Syggrou-FIX | Trolley-Bus: Line 10, Stop “Panteios” | Bus: Line 040, A2, B2, E22, E90, 106, 126, 136, 137, 550 (Stop Panteios) | Tramway: Stop “FIX and Kasomouli”.

**Harokopio University** / Conference Venue | 70 El. Venizelou str., 17671 Athens, Greece | Metro Line 1/Blue Line: Station “Tavros” | Trolley-Buses: Line 1 ( Stop “Karagianni”) and Line 5 ( Stop “Harokopou”).

**Athenaeum InterContinental Hotel** / Conference Venue | 89-93 Syggrou Ave., 11745 Athens, Greece | Metro Line 2/Red Line: Station “Syggrou-FIX” | Tramway: Stop “Neos Kosmos”.

**MEGARON Athens Concert Hall** /Opening Ceremony | Vas. Sofias Ave. & Kokkali str., 11521, Athens, Greece | Metro Line 3/Blue Line: Station “Megaron” (Athens Concert Hall) | Trolley-Buses: Lines 13, 12, 10 and 3 Stop right in front of the Concert Hall | Bus: E14, X14, A5 and 550 Stop right in front of the Concert Hall.

**SNFCC – Stavros Niarchos Foundation Cultural Center**/Closing Party | 364 Syggrou Ave., 176 74 Kallithea | Lines B2, 550\*: Getting off at the Stop “Onasseio” on Syggrou Ave. southbound, head south in the direction of the sea, up to Evripidou str. (junction with Syggrou Ave. by-lane).

**Athens International Airport “Eleftherios Venizelos”** | For further information please visit: <https://www.aia.gr/traveler/> | Athens International Airport S.A., 19019 Spata, Attica | Telephone (+30) 2103530000 | email: [airport\\_info@aia.gr](mailto:airport_info@aia.gr).

**Urban Rail Transport S.A.** | Airport Connection | Metro Line 2/ Blue Line | For further information please visit:

[http://www.stasy.gr/fileadmin/pages\\_material/metakinitheite/maps/Diktyo\\_Astikon\\_Sygkinonion\\_Athinon\\_en.pdf](http://www.stasy.gr/fileadmin/pages_material/metakinitheite/maps/Diktyo_Astikon_Sygkinonion_Athinon_en.pdf)

*\*Bus lines B2 and 550 pass through the metro Station Syggrou Fix (Red Line), where you can change means of transport.*

## Further Details

### **Conference Bag/kit contents**

Programme Book – Pocket Version

Location guide

Athens Map

Water bottle

Pen

Promotion / informational leaflets

Those who have ordered the printed Program Book will pick it up at the same desk where the conference bag/kit will be delivered.

### **Name Badge**

All participants must wear their name badge visibly at all times in order to have guaranteed access to the Conference Venues. The following scheme is used for identification of participants:

/Name, Surname, Country

### **Conference Certificate**

Please refer to the registration desk.

### **Social Responsibility**

The amount of Lunchboxes that will not be handed out, will be delivered to vulnerable social groups as gesture of support to those in need.

Water stations will be available and all participants will be provided with a refillable water bottle. Tap water is also safe to drink.

### **Liability**

*The Local Organizing Committee, the Conference organisation and the Conference Venues accept no liability for personal injuries or loss of any nature whatsoever, or for loss or damage to property either during or as a result of the conference.*

## Useful Information

**Currency** | Euro

**Exchange Rate** | The European Central Bank

**Climate and Weather** | According to the extended weather forecast during the 13th ESA Conference the temperature in Athens will vary between 22°C / 33°C and the weather is expected to be mostly sunny. For further information please visit:

<https://www.accuweather.com/en/gr/athens/182536/august-weather/182536>

**Time** | EEST (Eastern European Summer Time) - UTC/GMT +3 hours

**Public Transport** | The Athens public transportation network offers you a wide variety of routes, combining many different means, namely the metro, railway, buses, trolleybuses and trams. For further information please visit:

• **Buses and Trolley Buses** | <http://www.oasa.gr/?id=ind3ex&lang=en>

• **Metro, Railway and Tram Lines** | <http://www.stasy.gr/index.php?id=67&L=1>

• **Athens Suburban Railway** | <http://www.trainose.gr/en/passenger-activity/suburban-railway/athens-suburban-railway/>

**Telephone** | The international dialing code for Greece is +30 (0030)

**Wi-Fi** | Available in many restaurants, cafes, hotels and many other locations. Full internet access at the conference venues as well (for passwords please see the General Conference Information)

**Electricity** | In Greece the power sockets are of type C and F. The standard voltage is 230 V and the standard frequency is 50 Hz. The best power adapter for Greece will be a Type F Adapter.

**Hypermarkets and Shopping Centers** | 10:00-21:00 Mo-Fr and 10:00-20:00 on Saturday

**Banks** | 08:00-14:30 Mo -Thur and 08:00-14:00 on Friday

**Authorities** | 08:00-14:00 Mo-Fr are the standard office days and working hours for authorities



**Post Office** | 07:30-14:30 Mo-Fr 07:30-14:30 | Post Office network: <http://www.elta.gr/en-us/findapostoffice.aspx>

**List of Embassies in Athens** | For further information please visit: <https://embassy.goabroad.com/embassies-in/greece>

### **Lost and Found** |

• **Athens airport** | For further information please visit: <https://www.aia.gr/traveler/travellers-info/lost-and-found/>

• **Athens Metro and Railway Lost and Found Service** | Lost property office operates in Station "Syntagma", where lost property found in trains and Metro areas is collected there | Monday - Friday 07:00-19.00 | Telephone: 210 3279630 | Fax: 210 3279649

### **Important Phone Numbers** |

**Police** | 100 (emergency number)

**Fire Service** | 199 (Emergency number)

**Hellenic Coast Guard** | 108 (emergency number)

**National Emergency Center (EKAV)** | 166 (emergency number)

## Venues Blueprints & Key Information

**Registration & Information Desk** | Panteion University | PC Building, Ground Floor |  
 Tuesday 29.08, 11:00-17:00 | Wednesday 30.08 & Thursday 31.08, 08:00-19:30 |  
 Friday 01.09, 08:00-18:00

**Exhibition Area** | Panteion University | PC Building, Atrium |  
 Tuesday 29.08, 11:00-17:00 | Wednesday 30.08 & Thursday 31.08, 08:00-19:30 |  
 Friday 01.09, 08:00-18:00

### Coffee & Lunch Areas

Panteion University | PC and PD Building, Level 2 | Harokopio University | Building HA, Level 2 |  
 Athenaeum InterContinental Hotel, Room Ypsilon IV – V – VI, Level -1

### Conference Rooms Index

#### Venue | Harokopio University

Building HA | Level 1 | Rooms HA.1.1 - 1.3  
 Building HA | Level 2 | Rooms HA.2.4 - 2.9  
 Building HA | Level 3 | Room HA.3.10  
 Building HA | Level 4 | Room HA.4.11  
 Building HB | Level 1 | Rooms HB.1.12 - 1.15  
 Building HB | Level 2 | Rooms HB.2.16 & 2.17  
 Building HB | Level 3 | Rooms HB.3.18 & 3.19

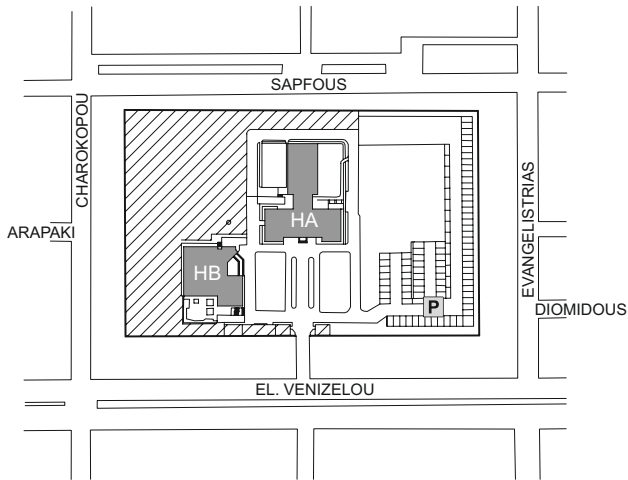
#### Venue | Athenaeum InterContinental Hotel

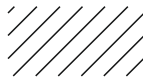
Building IC | Level 0 | Room Aphrodite I  
 Building IC | Level 0 | Room Aphrodite II  
 Building IC | Level 0 | Room Arcade I  
 Building IC | Level 0 | Room Arcade II  
 Building IC | Level 0 | Room Athenaeum CC I  
 Building IC | Level 0 | Room Athenaeum CC II  
 Building IC | Level 0 | Room Athenaeum CC III  
 Building IC | Level -1 | Room Omikron II  
 Building IC | Level -1 | Room Ypsilon I  
 Building IC | Level -1 | Room Ypsilon II  
 Building IC | Level -1 | Room Ypsilon III

#### Venue | Panteion University

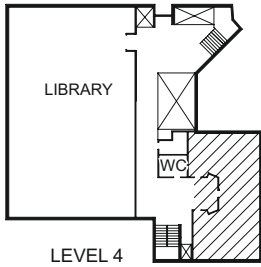
Building PA | Level 1 | Rooms PA.1.1-1.3  
 Building PB | Level 1 | Room PB.1.4  
 Building PB | Level 2 | Rooms PB.2.5 & 2.44  
 Building PB | Level 3 | Room PB.3.6  
 Building PC | Level 1 | Room PC.1.7  
 Building PC | Level 2 | Rooms PC.2.8-2.14  
 Building PC | Level 3 | Rooms PC.3.15-3.21  
 Building PC | Level 4 | Rooms PC.4.22-4.27  
 Building PC | Level 5 | Rooms PC.5.28 & 5.29  
 Building PC | Level 6 | Rooms PC.6.30-6.32  
 Building PD | Level 2 | Rooms PD.2.33 & 2.34  
 Building PD | Level 4 | Rooms PD.4.35-4.37  
 Building PE | Level 1 | Rooms PE.1.38 & 1.39  
 Building PE | Level 3 | Room PE.3.40  
 Building PE | Level 6 | Rooms PE.6.41 & 6.42  
 Building PF | Level 1 | Room PF.1.43

HAROKOPIO UNIVERSITY CAMPUS

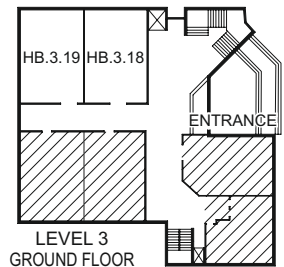
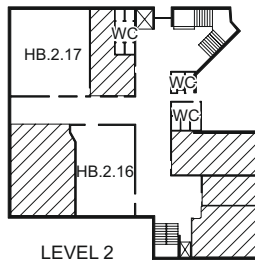
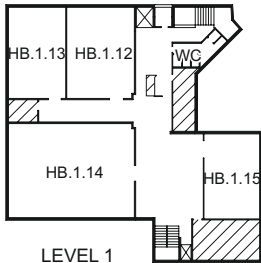
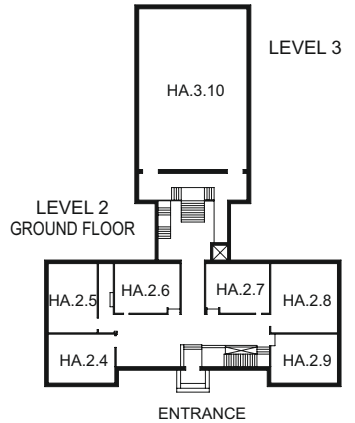
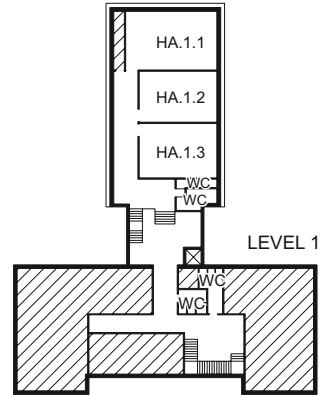
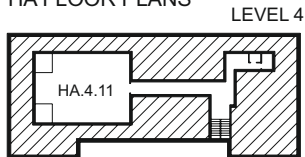


 not available for the conference activities

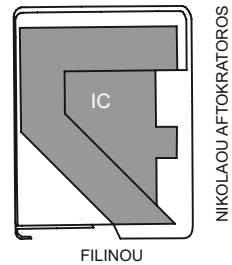
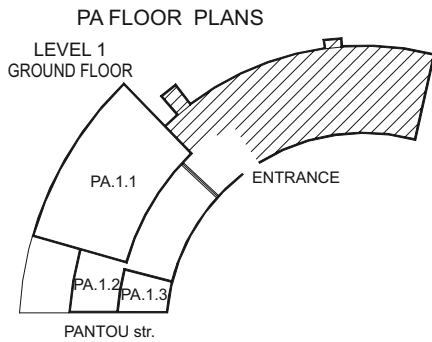
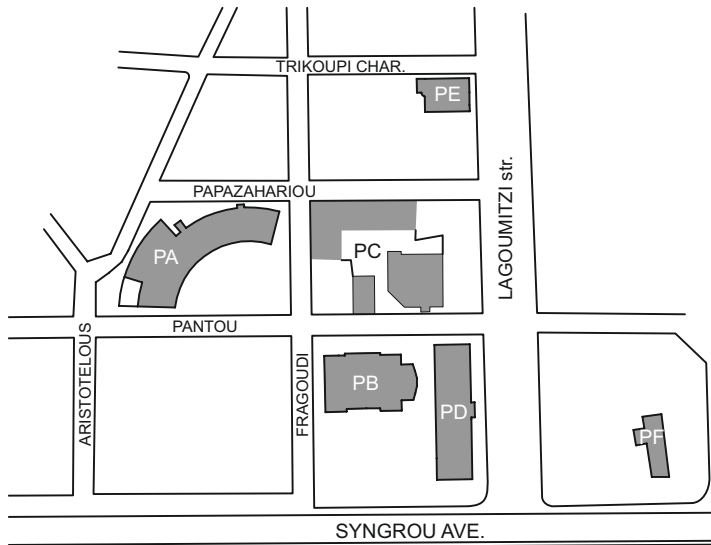
HB FLOOR PLANS



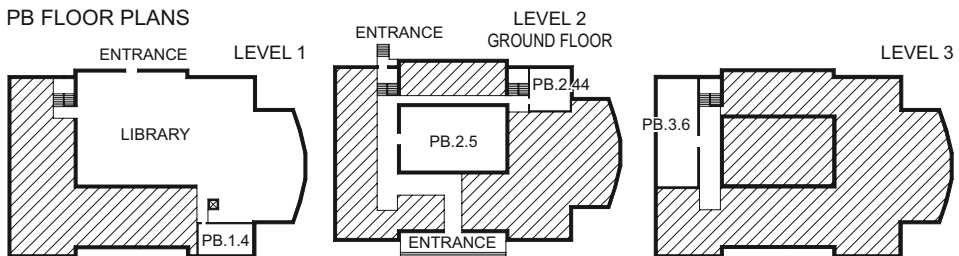
HA FLOOR PLANS



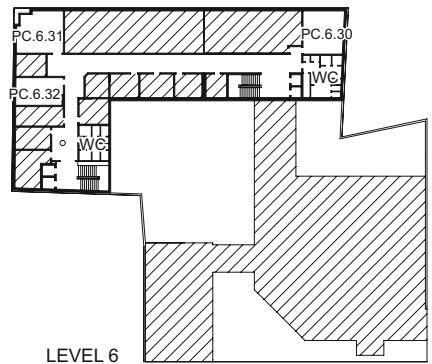
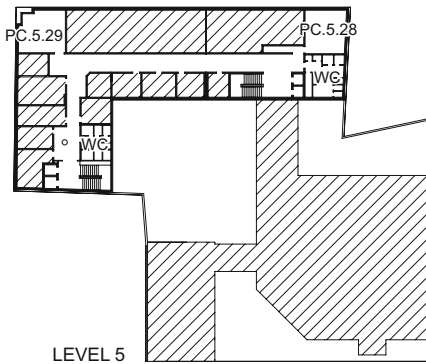
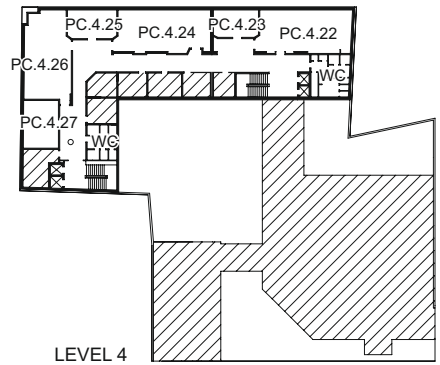
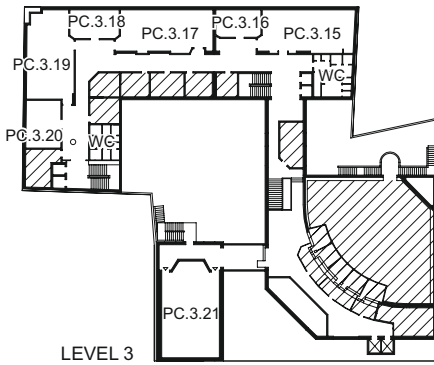
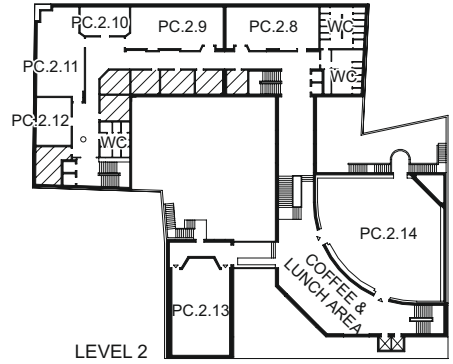
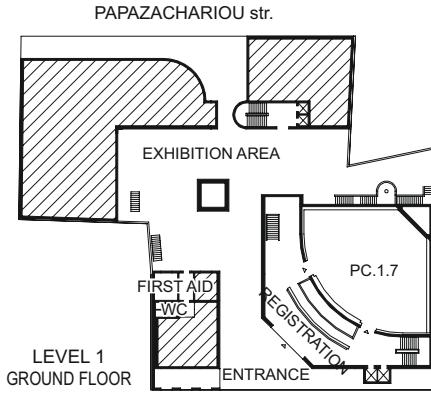
PANTEION UNIVERSITY CAMPUS



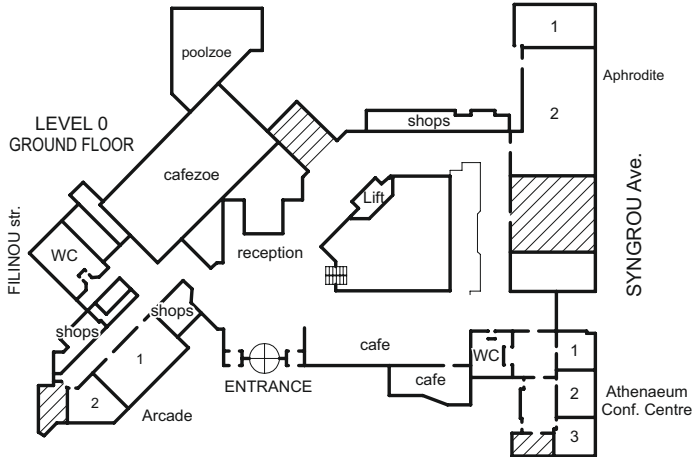
**PB FLOOR PLANS**



PC FLOOR PLANS

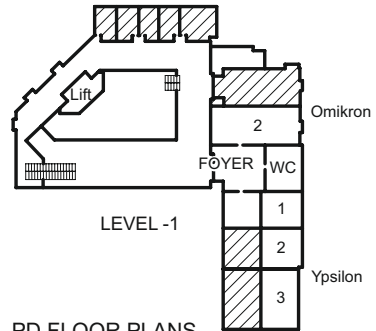
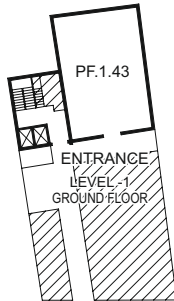
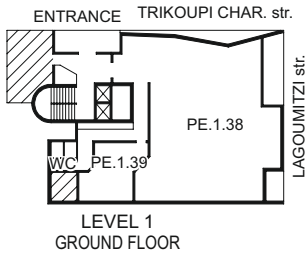


Athenaeum InterContinental Hotel FLOOR PLANS

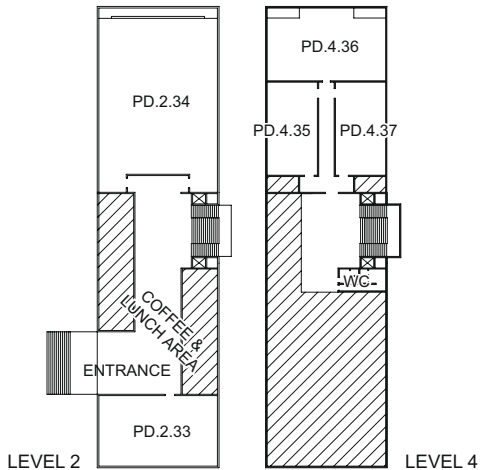
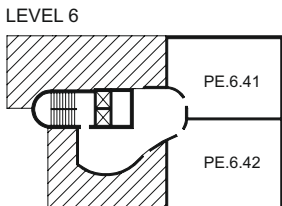
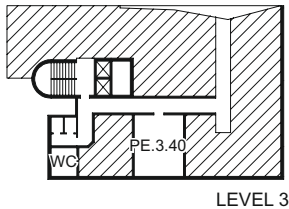


PF FLOOR PLANS

PE FLOOR PLANS



PD FLOOR PLANS



## Coffee Break and Lunch Areas

### **Wednesday 30.08**

10:30 – 11:00 Coffee Break (Panteion University)

12:30 – 14:00 Lunchboxes (Panteion University)

15:30 – 16:00 Coffee Break (Panteion University / Harokopio University / InterContinental Hotel)

### **Thursday 31.08**

10:30 – 11:00 Coffee Break (Panteion University / Harokopio University / InterContinental Hotel)

12:30 – 14:00 Lunchboxes (Panteion University / Harokopio University)

15:30 – 16:00 Coffee Break (Panteion University / Harokopio University / InterContinental Hotel)

### **Friday 01.09**

10:30 – 11:00 Coffee Break (Panteion University)

12:30 – 14:00 Lunchboxes (Panteion University)

15:30 – 16:00 Coffee Break (Panteion University / InterContinental Hotel)

### **Coffee Breaks**

Coffee, beverages and coffee snacks will be provided to all participants. Please take into consideration that Coffee Break will take place accordingly to the conference programme.

### **Lunchbox Menu**

Lunchbox Menu is available only for those participants who have purchased them in advance. Taking under consideration the contemporary food preferences, there will be three menu options: Regular Menu, Vegetarian Menu and Vegan-Gluten Free Menu.

The participants will have the chance to discover wonderful local produce and gourmet delights from all over Greece with a modern twist. Traditional Greek raw materials that have given Greek gastronomy worldwide fame and recognition will be used and confirm to high quality standards.

### **Further Food and Drinks Options**

There are also cafis/fast-foods/restaurants inside and close to Panteion University and Harokopio University Campuses

## Conference Schedule

	<b>Tuesday 29.08</b>	<b>Wednesday 30.08</b>	<b>Thursday 31.08</b>	<b>Friday 01.09</b>
9:00	NA Council Meeting 10:00 - 16:00	Semi-Plenaries 1-4	RN/RS Session 4	Semi-Plenaries 10-13
10:30		Coffee Break	Coffee Break	Coffee Break
11:00		Semi-Plenaries 5-9	RN/RS Session 5	RN/RS Session 9
12:30		Break	Break	Break
12:45	RN Council Meeting 12:45 - 15:30	Mid-day Specials 1-6	Mid-day Specials 7-13	ESA General Assembly 12:45-13:45
13:45		Break	Break	Break
14:00		RN/RS Session 1	RN/RS Session 6	RN/RS Session 10
15:30	Coffee Break	Coffee Break	Coffee Break	Coffee Break
16:00		RN/RS Session 2	RN/RS Session 7	RN/RS Session 11
17:00				
17:30	Break	Break	Break	Break
18:00	<b>OPENING CEREMONY</b> Opening plenary (Megaron) 18:00 - 20:30	RN/RS Session 3	RN/RS Session 8	<b>CLOSING CEREMONY</b> Closing Plenary (Niarchos) 18:30 - 20:00
19:30		Break		
20:00			RN/RS Business Meetings	Conference Party (Niarchos) 21:00 - 24:00
20:30	Welcome Reception (Megaron) 20:30 - 22:00	Special Evening Plenary (Niarchos) 20:15 - 22:15		



## Types of Sessions

While Research Network (**RN**) and Research Stream (**RS**) sessions cover the immense variety of sociological inquiry, Plenary, Semi-Plenary and Mid-Day Special sessions offer the opportunity to share a few core debates. All session formats will include time for open discussion.

*Plenaries* include the Opening Plenary, the Special Evening Plenary and the Closing Plenary. Plenaries address the main conference theme.

*Semi-Plenaries (SPs)* discuss the main conference theme from the viewpoint of different fields of research. SPs are based on proposals made by the ESA Research Networks. For the first time, some SPs were also open to abstract submission. SPs promote discussion between speakers, next to that with participants. Four SPs are organised by the Executive Committee. One SP is organised by the Local Organising Committee.

*Mid-day Specials (MDs)* comprise various session formats: ESA Lecture Series, Author-Meets-Critics, a few special topical sessions and more. MDs are offered in one hour sessions at lunchtime. MDs are shorter sessions especially devised for engaging discussions with conference participants.

*Research Network (RNs)* sessions feature research papers submitted in response to the open conference Call for Papers. The majority of sessions is organised by ESA's 37 active Research Networks. RNs are open to all ESA members. They are based on democratic rules. All RNs hold a business meeting at the conference (on Thursday, 31 August, in the evening after the last regular session). New members are cordially invited to join one or several RNs of their choice.

*Research Stream (RSs)* sessions are made by sociologists from several European countries who come together to organise sessions on very specific sociological topics. RSs are self-organised bodies with a loose structure which is determined by the researchers who join the stream. Previous to the Call for Papers, a 'Call for RS proposals' has been distributed to all ESA members. While some RSs are regularly organising biennial meetings at ESA conferences, other RSs offer ad hoc sessions on the spur of the Athens conference topic.

*Roundtable (RT)* sessions are being introduced for the first time. They should foster interactive lively debates. At this year's conference, there will be three RTs on Thursday, 31 August in the afternoon, for presenters from RN10, RN18 and RN25. The room is the largest conference room at the Intercontinental Hotel, Aphrodite II. In each RT session, there will be several tables with presenters. Please note that no technical equipment is supplied at the Roundtable Sessions. Please prepare a presentation that will not require a laptop or projector.

## Meetings & Assemblies

### **National Associations Conference and Council Meeting**

Tuesday, 29.08.2017, 10:00 - 15:00 | Room PB.3.6

Chair: Sue Scott (York)

Meeting for Chairs and Representatives of the National Associations

Speakers: John Holmwood and Marta Soler

### **Research Networks Council Meeting**

Tuesday, 29.08.2017, 12:45 - 15:30 | Room PC.2.14

Chair: Laura Horn (Roskilde)

Meeting for all RN coordinators

### **RN/RS Business Meetings**

Thursday, 31.08.2017, 19:30

Chaired by the RN/RS coordinators

Open to all

### **Past Presidents Meeting**

Thursday, 31.08.2017, 16:00 | Room PC.5.29

Meeting for previous ESA Presidents

### **General Assembly**

Friday, 01.08.2017, 12:45 - 13:45 | Room PD.2.34

(see the following page)

## ESA General Assembly

Friday, 01.01.2017

12:45 – 13:45 | Room PD.2.34

### Agenda:

1. Opening
2. President's report (Frank Welz)
3. Treasurer's report (Kathrin Komp)
4. Reports from other Sub-Committees
  - Conference Committee (Christian Fuchs)
  - National Associations (Sue Scott)
  - Post-Graduate Research Committee (Airi-Alina Allaste)
  - Publications Committee (Marta Soler)
  - Research Networks Committee (Laura Horn)
5. Discussion of ESA Strategies (Open Access; Advocacy for Social Science)
6. Approval of ESA Statutes
7. ESA Bylaws - proposal for an electronic vote (12 weeks after the GA) and discussion
8. Presentation of the 14th ESA Conference in Paris, 27-30.08.2019
9. Results of the ESA Elections (Helena Serra) - Introduction of the new President

## Opening Ceremony & Opening Plenary (Un)Making Capitalism

Tuesday, 29.08.2017 18:00 - 22:00 at Megaron

Opening Plenary with David Harvey and Eva Illouz

### **Welcome Addresses**

Lefteris Kretsos, Secretary General for Media and Communication, Ministry of Digital Policy, Telecommunications and Media

Apostolos G. Papadopoulos, Chair of the Local Organising Committee & President of the Hellenic Sociological Society

### **Introduction to the Conference**

Frank Welz, President of the European Sociological Association

### **Opening Plenary**

Session Chair: Christian Fuchs, University of Westminster

David Harvey, City University of New York

*When Money Betrays Value*

Eva Illouz, Hebrew University of Jerusalem

*Evaluation, Valuation, and Devaluation: Sexuality and the Techno-Capitalist Self*

### **Concert**

The Athens State Orchestra Brass & Percussion Ensemble - METALLON

### **Short Presentations by the Candidates for ESA President 2017–2019**

Session Chair: Helena Serra, ESA Nomination Committee

Sue Scott, University of York

Frank Welz, Innsbruck University

### **Welcome - Reception | 20:30 – 22:00**

Foyer of MEGARON Athens Concert Hall

**ESA 2017  
ATHENS**

**29.08**

**01.09**



## Opening Plenary

Session Chair:

Christian Fuchs, University of Westminster



**David Harvey**, City University of New York, United States of America

*When Money Betrays Value*

Chinese policy makers rate August 15th 1971 as one of the most important dates in world history. On that day President Nixon announced that the peg of the dollar to gold (at \$35 an ounce) was to be broken, thus breaching the dialectical relation that had long built up within capitalism between social labour and its representation in the material form of the money commodities. This set in train a shift in the historical and geographical development of capitalism that brought a strange mix of excessive though often spectacular urban development and violent dispossessions, extractions and repressions that constitute our present reality, explaining why we are more and more focused on building cities for people, institutions and even governments to invest in rather than cities for all to live in.

### SHORT BIOGRAPHY:

David Harvey is Distinguished Professor of Anthropology and Geography at the Graduate Center of the City University of New York (CUNY) and author of various books, articles, and lectures that have been prominent in the development of modern geography as a discipline and in the advancement of geographical and spatial analysis in Marxist and critical analysis. He is the author of books such as "Seventeen Contradictions and the End of Capitalism" and "The Enigma of Capital and the Crises of Capitalism", which was one of The Guardian's Best Books of 2011. Among his other books are "A Companion to Marx's Capital", "A Short History of Neoliberalism", "The New Imperialism", "Limits to Capital", and "Social Justice and the City". Professor Harvey has been teaching Karl Marx's Capital for nearly 40 years. He was director of the Center for Place, Culture and Politics at the CUNY from 2008 to 2014.



**Eva Illouz**, Hebrew University of Jerusalem, Israel

*Evaluation, Valuation, and Devaluation: Sexuality and the Techno-Capitalist Self*

This presentation wants to show how the three main activities of the capitalist economy – evaluation, valuation and devaluation – have been transferred into the realm of sexuality.

**SHORT BIOGRAPHY:**

Eva Illouz has been Professor of Sociology at the Hebrew University in Jerusalem since 2006 and a Directeur d'Etudes at the School for Advanced Studies in the Social Sciences (EHESS) in Paris since 2015. She researches how emotional life has been transformed by capitalism and by the culture of modernity. Her studies on emotions, consumer society and media culture are regarded as milestones in the study of emotions and relations in the modern world. She is the author of books such as "Consuming the Romantic Utopia: Love and the Cultural Contradictions of Capitalism" (Honorable Mention for the Best Book Award, American Sociological Association, 2000), "Cold Intimacies: The Making of Emotional Capitalism" (2007), "Saving the Modern Soul: Therapy, Emotions, and the Culture of Self-Help: Therapy, Emotions, and the Culture of Self-Help" (2008), "Why Love Hurts: A Sociological Explanation" (Best Book Award, Alpine Philosophy Society in France, 2012), "Hard-Core Romance: Fifty Shades of Grey" (2014). Professor Illouz was the first woman President of Bezalel Academy of Art and Design Jerusalem.

## Special Evening Plenary (Un)Making Europe

Wednesday, 30.08.2017 20:15 - 22:15 at Niarchos

Special Evening Plenary with Yanis Varoufakis and Donatella della Porta

Session Chair(s):

Frank Welz, ESA President, University of Innsbruck)



**Yanis Varoufakis**, University of Athens, Greece

*What Comes After Europe's Failed Neoliberal Experiment? The Case for an Internationalist European New Deal*

The EU was founded as a corporatist project whose purpose was to take economic policy decisions out of the liberal democratic process across Europe. Once it developed a common currency condemned to unravel at the sign of the next global financial crisis, both the new currency and the neoliberal mantra that enveloped it at the level of ideology degenerated into a source of deflationary policies and increasing authoritarianism – both at odds with the logic of liberal democracy and dream of prosperity that the EU depended upon for its legitimacy and coherence. The pressing question for progressives now is: Can this EU be saved? Is it worth saving? Yanis Varoufakis' answer turns on DiEM25's proposal for an internationalist European New Deal.

### SHORT BIOGRAPHY:

Yanis Varoufakis read mathematics and economics at the Universities of Essex and Birmingham and subsequently taught economics at the Universities of East Anglia, Cambridge, Sydney, Glasgow, Texas and Athens, where he holds a Chair in Economic Theory. He is also Honoris Causa Professor of Law, Economics and Finance at the University of Torino, Honorary Professor of Political Economy at the University of Sydney, Visiting Professor of Political Economy at King's College, London, and Doctor of the University of Sussex Honoris Causa. His latest books include *Adults in the Room: My struggle against Europe's Deep Establishment* (2017); *And the Weak Suffer What They Must? Europe, Austerity and the Threat to Global Stability* (2016); *Economic Indeterminacy* (2014), and *The Global Minotaur: America, Europe and the Future of the World Economy* (2011).

In January 2015 he was elected to Greece's Parliament and served as Greece's Finance Minister (until July 2015). During his term he experienced



firsthand the authoritarian inefficiency of the European Union's institutions and had to negotiate with the Eurogroup, the European Central Bank and the International Monetary Fund. Varoufakis resigned the finance ministry when he refused to sign a loan agreement that perpetuated Greece's debt-deflationary cycle. In February 2016 he co-founded DiEM25, the Democracy Europe Movement, which has grown in numbers across Europe since then.



**Donatella della Porta**, Scuola Normale Superiore, Italy

*Social Movements in the European Crisis. Still A Time of Critical Europeanism?*

As trust in the European Union is dramatically falling amongst its citizens, research on alternative visions of Europe 'from below' appears all the more relevant. Civil society organizations linked to the so called 'left-libertarian' movement family have long voiced progressively more critical positions about the EU, yet at the same time promoted 'another Europe' and Europeanized their organizational networks and action strategies. Like the labour movement during the development of nation-states, progressive social movements seemed destined to play a valuable role in pushing for a social and democratic Europe. Accordingly, at the beginning of the millennium cosmopolitan activists of the Global Justice Movement developed critical visions of Europe, elaborating complex reforms for EU policies and politics. While social movement studies, along with other areas of the social sciences, have assumed increasing Europeanisation, recent developments have challenged this view. In particular with the advent of the financial crisis, progressive social movements seem to have moved back to the national and local levels, engaging very little or not at all with the EU and questions of Europe more generally (Kaldor & Selchow 2012). To what extent critical Europeanism has ceded terrain to Euroscepticism, including within this alternative European vision, is a central question I seek to address in this talk.

#### SHORT BIOGRAPHY:

Donatella della Porta is Professor of Political Science, Dean of the Institute for Humanities and the Social Sciences and Director of the PD program in Political Science and Sociology at the Scuola Normale Superiore (SNS) in Florence, where she also leads the Centre on Social Movement Studies (Cosmos). Between 2003 and 2015 she has been Professor of Sociology at the Department of Political and Social Sciences at the European University Institute. Her latest books are "Late Neoliberalism and its Discontents", "Movement Parties in Times of Austerity" and "Where did the Revolution go?". In 2011, Professor della Porta received the Mattei Dogan Prize. The main topics of her research include social movements, political violence, terrorism, corruption, the police and protest policing.

## Closing Ceremony & Closing Plenary (Un)Making Subjectivities

Friday, 01.09.2017 18:30 - 20:00 at Niarchos  
Closing Plenary with Wendy Brown and Hartmut Rosa

### Closing Plenary

Session Chair: Apostolos G. Papadopoulos, Harokopio University

Wendy Brown, University of California

*How Did the Extreme Right Become the Party of Freedom?*

Hartmut Rosa, University of Jena, Germany

*(Un)Making Subjects of Growth: Dynamic Stabilisation and the Resonance  
Conception of Subjectivity*

### Closing of the Conference

**New elected ESA President**

**Thanks to the Conference organisers**

## Closing Plenary

Session Chair:

Apostolos G. Papadopoulos, Harokopio University



**Wendy Brown**, University of California

*How Did the Extreme Right Become the Party of Freedom?*

Contemporary right wing political movements heralding nationalism, nativism and traditional (Christian) values are often said to be ushering in a new era of “illiberal democracy.” Yet these movements generally march (and troll) under a banner of freedom and charge their opposition with political values that curtail, endanger or forthrightly assault freedom. What part has neoliberal reason played in this development? What novel formulation of freedom, fuelled by what kinds of social and psychic energies, and legitimated by what supplementary principles, has inadvertently emerged from three decades of neoliberalised politics and everyday life in Western “democracies”?

**SHORT BIOGRAPHY:**

Wendy Brown is Class of 1936 First Professor of Political Science at the University of California Berkeley, where she also teaches in the interdisciplinary graduate program in Critical Theory. As a scholar of historical and contemporary political theory, she has established new paradigms in critical legal studies and feminist theory. In recent years, her work has focused on neoliberalism and the political formations to which it gives rise. Her latest books include “Undoing the Demos: Neoliberalism’s Stealth Revolution”, “The Power of Tolerance” (with Rainer Forst) and “Walled States, Waning Sovereignty”. Professor Brown is also a frequent contributor to debates about the predicaments and future of public higher education. She is a 2017-18 Guggenheim Fellow and UC President’s Humanities Fellow.



**Hartmut Rosa**, University of Jena, Germany

*(Un)Making Subjects of Growth: Dynamic Stabilisation and the Resonance Conception of Subjectivity*

The lecture will present a heuristically schematized account of the core features of the modern, capitalist social formation (section 1), of the crises and pathologies it necessarily creates (section two), and of a possible way to transform or revolutionize this formation in the sense of a fundamental paradigm shift (section three). The contribution starts from the assumption that we can only understand society’s fabric and its dynamics if we simultaneously look at its structural ('objective') features and its cultural (or 'subjective') underpinnings which provide the (motivational) energy for social life to progress and evolve. The paper will argue that the two sides always go together in the sense of an 'elective affinity' (Max Weber), which implies that we cannot assume that structure always prefigures or pre-determines culture – or the other way round. Hence, the keynote will explore the intrinsic connection between the dominant forms of modern subjectivity and the mode of structural reproduction of modern society with a view to the 'desire' for growth, acceleration and innovation on the one hand and to the socio-economic imperatives which structurally 'enforce' the ensuing logic of escalation on the other hand.

In order to put forward the claim in the most straightforward and bold way possible, the line of argument is this: 1) Structurally, capitalist modernity can be defined as a social formation which can only reproduce itself in the mode of 'dynamic stabilization', i.e. through incessant growth, acceleration and innovation. 2) Culturally, this social formation is driven by a 'Triple-A-Aspiration' or 'Triple-A-Approach', i.e. by the desire to make the world 'accessible', 'available' and 'attainable' to an ever larger degree. 3) Structurally, this leads to pathologies of 'desynchronisation' (such as the ecological crisis, the crisis of democracy and the burnout-crisis), while

culturally, the triple-A-approach to the world leads to 'alienation'. Thus, while the formation of modern subjectivity is culturally geared and structurally forced towards an 'escalatory' approach to the world, modern subjects are in danger of 'losing' this very world on both counts: 'Objectively' by destroying instead of appropriating their natural surroundings, and 'subjectively' by experiencing the world as dead, silent and grey as well as illegible. 4) Therefore, a fundamental paradigm shift is needed that structurally replaces dynamic stabilization with a mode of 'adaptive stabilization' and which culturally replaces the triple-A-approach with a 'resonance' conception of the good life. Resonance in this sense is defined as an alternative mode of relating to the world which is 'not' geared towards increasing the horizon of what is available, attainable and accessible, but which develops 'responsible', dialogical relationships in three dimensions: with 'things' (material resonance), with 'people' (social resonance) and with life or the world as a totality (vertical resonance).

#### SHORT BIOGRAPHY:

Hartmut Rosa is Professor of Sociology at the Institute of Sociology at the Friedrich Schiller University of Jena and Director of the Max Weber Center for Advanced Cultural and Social Studies at the University of Erfurt, Germany. He has worked with the New School for Social Research in New York and the Universities of Augsburg, Duisburg-Essen and Mannheim. His research interests are the sociology of time and identity formation and he is considered to be a leading representative of the new critical theory. He is the author of "Social Acceleration", "High Speed Society, Social Acceleration, Power, and Modernity" and "Acceleration: Towards a Critical Theory of Late Modern Temporality". Professor Rosa is co-editor of the peer-reviewed journal *Time & Society*.



## Summary Table of Semi-Plenary Sessions

### **Wednesday, 30.08.2017 | 09:00 – 10:30**

SP01: *The Structural Transformation of Europe's Public Sphere in the Age of Extremes* with Ruth Wodak and Nicolas Demertzis | Panteion | Room PD.2.34

SP02: *Migration in Times of Europe's Economic Crisis* with Elisabeth Scheibelhofer and Guglielmo Meardi | Panteion | Room PC.2.14

SP03: *The Sociology of Sustainable Food Consumption* with Julie Guthman and Lotte Holm | Panteion | Room PB.2.5

SP04: *Questioning Boundaries of Age and Place: Child Refugees in an Uncertain Europe* with Pascale Garnier and Rachel Rosen, Sarah Crafter | Panteion | Room PC.1.7

### **Wednesday, 30.08.2017 | 11:00 – 12:30**

SP05: *Anatomy of the Greek Crisis* with Maria Petmesidou and Nicos Mouzelis | Panteion | Room PD.2.34

SP06: *(Un)Making Europe* with Stefan Immerfall and Kostas Maroniti | Panteion | Room PC.1.7

SP07: *(Un)Making Capitalism* with Lara Monticelli and Paul Raekstad | Panteion | Room PC.2.14

SP08: *(Un)Making Solidarities* with Ipek Demir and Pekka Juhani Sulkunen | Panteion | Room PB.2.5

SP09: *(Un)Making Subjectivities* with Anastasia Denisova and Nayia Kamenou | Panteion | Room PA.1.1

### **Friday, 01.09.2017 | 09:00 – 10:30**

SP10: *Right-Wing Extremism and Islamist Extremism in Europe: Similarities and Differences* with Esther Webman and Zbyněk Tarant | Panteion | Room PD.2.34

SP11: *Care Labour and Affective Labour in the Global Care Chain* with Konstantina Davaki and Lise Widding Isaksen | Panteion | Room PC.1.7

SP12: *The Transformations of Capitalism in Eastern Europe* with Jan Drahokoupil and Svetlana Stephenson | Panteion | Room PB.2.5

SP13: *Public Sociology and Public Intellectuals in Times of Europe's Crisis* with Markus Schulz and Maria Kousis | Panteion | Room PC.2.14

## Semi-Plenary Sessions

**Wednesday, 30.08.2017 | 09:00 – 10:30 | Room PD.2.34**

**SP01:** *The Structural Transformation of Europe's Public Sphere in the Age of Extremes* with Ruth Wodak and Nicolas Demertzis

Session Chairs:

Roy Panagiotopoulou, National and Kapodistrian University of Athens

Romina Surugiu, University of Bucharest, Faculty of Journalism and Communication Studies

**Ruth Wodak**, Lancaster University, United Kingdom

*“Protecting Fortress Europe”: Identity Politics, Right-Wing Populism, and the Negotiation of “Borders” and “Benchmarks” in National and EU Arenas*

Major tensions are governing the debates about refugees on the European stage and in the 28 EU nation states, focused on questions such as 'How many refugees can a nation state cope with?'; 'Which kind of refugees/who should be allowed in?'; 'How will we integrate them?' and 'How to protect Europe/Schengen from illegal migrants/terrorists, etc.?' Europe's "peace-keeping mission" has been back-grounded, refugees have been transformed into commodities, moved from one place to the other. Other discourses, however, foreground the various European and UN treaties, signed by all EU member states, and draw historical analogies between crises of the past (Second World War, 1956, 1968, 1981, 1989, 2001) and the present. Various scape-goats have emerged in these debates: the EU institutions, Greece and Italy, young male (Muslim) refugees, the so-called 'good people' (Gutmenschen) who are too naïve, etc. Nationalistic and nativist border- and body politics have become part and parcel not only of the radical right rhetoric but of the political mainstream, advocating a "politics of fear". These debates imply struggles about how to justify/legitimize the various measures needed to protect Europe from refugees. In my lecture, I trace the genealogy of these debates both on the European as well as national (mainly Austrian) stage while analyzing a corpus of TV interviews, newspaper and news agency reports as well as interviews with leading protagonists in systematic qualitative and quantitative ways.

### SHORT BIOGRAPHY:

Ruth Wodak is Emerita Distinguished Professor of Discourse Studies at Lancaster University, UK, and affiliated to the University of Vienna. Besides various other prizes, she was awarded the Wittgenstein Prize for Elite Researchers in 1996 and an Honorary Doctorate from University of Örebro in Sweden in 2010. In 2011, she was awarded the Grand Decoration of Honour in Silver for Services to the Republic of Austria. She is member of the British Academy of Social Sciences and

member of the Academia Europaea. 2008, she was awarded the Kerstin Hesselgren Chair of the Swedish Parliament (at University Örebro). She is co-editor of the journals *Discourse and Society*, *Critical Discourse Studies*, and *Language and Politics*. She has held visiting professorships in the University of Uppsala, Stanford University, University of Minnesota, University of East Anglia, EUI, Florence, and Georgetown University. In 2017, Ruth holds the Willy Brandt Chair at Malmö University.

Ruth has published 10 monographs, 27 co-authored monographs, over 60 edited volumes and ca. 400 peer reviewed journal papers and book chapters. Recent book publications include *The Politics of Fear. What Right-wing Populist Discourses Mean* (Sage, 2015; translation into German: *Politik mit der Angst. Zur Wirkung rechtspopulistischer Diskurse*. Konturen, 2016); *The discourse of politics in action: 'Politics as Usual'* (Palgrave), revised edition (2011); *Migration, Identity and Belonging* (with G. Delanty, P. Jones, 2011); *The SAGE Handbook of Sociolinguistics* (with Barbara Johnstone and Paul Kerswill, 2010); *Analyzing Fascist Discourse. Fascism in Talk and Text* (with John Richardson, 2013), and *Rightwing Populism in Europe: Politics and Discourse* (with Majid Khosravini and Brigitte Mral, 2013).

**Nicolas Demertzis**, National and Kapodistrian University of Athens, Greece

*The Multifaceted European Public Sphere(s): Socio-Cultural Dynamics*

Three overriding focal points deserve special attention: (a) the structural re-transformation, and (b) the unfettered emotionality of the public sphere in European societies, which center stage (c) the prospects of democracy for the decades to come. These points assume radical ambivalence as to the structuration of publicity and politics in postmodern information society. It is not that ICT just boost or vitalize democracy through participatory media, citizen journalism, social media, peer-to-peer technology, etc. It can also burst democracy to the extent that surveillance directed by governments and companies, the dark internet, and the narcissistic bias of the social media may refeudalize civil sphere and dissolve the very idea of the public interest. Although the emotions-politics nexus has been ever present, the more the information society assumes the form of the society of the spectacle the more the emotive expressions in public unleash unregulated. The emancipatory dimension of this dynamics is coupled by regressive affective reactions debilitating rather than empowering individualization processes. The "emotional public sphere" is formed by all media content; gone are the days where the media were telling us what to think about; through their emotional agendas they tell us what to feel about as well.

These ambivalences stem from four major factors: i) the intense commercialization of the cyberspace; ii) the neo-liberal pattern of homo debitor; iii) the cyber war against terrorism, and iv) the incremental informalization of manners and emotions. Thus a crucial question is likely to be re-posed in the neoliberal milieu: can the public sphere be effectively reconstituted under radically different socioeconomic, political and cultural conditions? Is democracy possible?

#### SHORT BIOGRAPHY:

Nicolas Demertzis is Professor at the Department of Communication and Media Studies, National and Kapodistrian University of Athens. He has published extensively in Greek and English journals and collective volumes. His academic and research interests include political sociology, political communication, and the sociology of emotions. Between 2004 and 2010 he has been Dean at the



Technical University of Cyprus, where he established the Department of Communication and Internet Studies, and the 2010-2013 period he was the President of the Greek State Scholarships Foundation (IKY). Currently, he is the Director and President of the Administrators Board of the National Centre for Social Research (EKKE).

### **Wednesday, 30.08.2017 | 09:00 – 10:30 | Room PC.2.14**

**SP02: *Migration in Times of Europe's Economic Crisis*** with Elisabeth Scheibelhofer and Guglielmo Meardi

Session Chair(s):

Alberto Veira-Ramos, Universidad Carlos III de Madrid

Karin Peters, Wageningen University

**Elisabeth Scheibelhofer**, University of Vienna, Austria

*Free Movement Revisited – Labyrinths of Transnational Social Security for EU migrants*

Based on a comparative three-year project TRANSWEL (2015-2018) I discuss results from qualitative fieldwork of European Union (EU) internal migrants in terms of securing their (transnational) social rights. Comparing four EU country pairs (Hungary-Austria/E. Scheibelhofer, Poland-UK/E. Carmel, Bulgaria-Germany/A. Amelina, Estonia-Sweden/A. Runfors) in a mixed methods approach we analyse the implications of 'free movement' for EU migrants moving from a so-called 'new' member state to an 'old' one. Based on 100 problem-centred interviews in the eight countries mentioned above, we comparatively investigate migrants' perceptions of and experiences with the respective (transnational) social welfare systems. This entails the access to social benefits as well as the transnational portability of social rights of migrants.

We will conclude that social inequalities are highly reproduced by the complexity and the ambiguousness of most regulations within the EU social security systems. Social stratification is accelerated as one-time working migrants with no care obligations at young or middle age with high cultural and economic capital can realise the promise of free movement within the EU to a much higher extent than all other groups diverging from this ideal type. Free movement as one corner stone of the European Union thus needs to be re-evaluated in light of our empirical results: the labyrinths are such that many Europeans cannot secure their social security even if they are employed and contributing to the social security systems of the EU countries they are (transnationally) living in.

#### **SHORT BIOGRAPHY:**

Elisabeth Scheibelhofer is Associate Professor in Sociology at the Department for Social Sciences, University of Vienna. Her works focus on migration, mobility and qualitative methods. Her research interests include more specifically migration and mobility of EU migrants within and outside of the EU as well as refugee studies with a focus on the experiences of refugees in rural areas. Currently, she works in the Norface project TRANSWEL on transnational social security of EU migrants (2015-2018) in which she has the overall responsibility of qualitative interviews with migrants and their significant others in eight EU countries. Publications and research also cover questions of

interpretive methods such as qualitative in-depth interviews, participant observation and qualitative network analysis. She was the initiator and first chair of the ESA Research network 35 "Sociology of Migration". Currently, she is part of the editorial board of the journal "Oesterreichische Zeitschrift fuer Soziologie" (Springer).

**Guglielmo Meardi**, University of Warwick, United Kingdom

*European Dilemmas Over Free Movement of Workers: Do Control and Openness Exclude Each Other?*

European migration has highlighted deep dilemmas over the compatibility of social protection and movement and on the social boundaries of welfare. These dilemmas came to a political crisis with the referenda against freedom of movement in Switzerland in 2014, and to leave the EU in the UK in 2016.

This presentation looks at the evidence of public opinion, public debates, and associational policies in a number of European countries (UK, Switzerland, Norway), as well as Canada, which is often portrayed as a 'model' by European politicians, going back to the EU enlargement and through critical cases such as the 'British jobs for British workers' strikes of 2009. It attempts to assess how far free movement of workers is really incompatible with social protection, and how far 'control' and 'openness' are really mutually exclusive.

The presentation identifies, more specifically, those dimensions of free movement that have become socially disruptive, and the variety of social responses that have emerged. It discusses the extent to which labour market regulations, social policies and social organisations can address social concerns over free movement while being perceived as 'fair' by both local and migrant groups, in order to 're-embed' free movement of workers into local employment regimes. It will conclude with the identification of social propositions and experiments that go in the direction of fairness as 'controlled openness' as an alternative to the emerging polarisation between 'control' and 'openness'.

#### SHORT BIOGRAPHY:

Guglielmo Meardi (Laurea Milan, DEA EHESS Paris and PhD EUI Florence) is Professor of Industrial Relations and Director of the Industrial Relations Research Unit at the University of Warwick, UK. After a decade of studying the 'labour movement', especially in Central Eastern Europe (see for instance his 'Labour Movements' entry in the ISA's Sociopedia), in the last decade he shifted his research towards the 'movement of labour', again especially from Central Eastern Europe. His analysis of labour migration between the eastern and western EU member states is framed in an 'Exit/Voice/Disloyalty' paradigm, as outlined in his book 'Social Failures of EU Enlargement: A Case of Workers Voting with their Feet' (Routledge 2012). He is currently working on a study of the link between migration and labour standard regulations post-Brexit. Guglielmo has held visiting positions at universities and academies of sciences in Belgium, Canada, France, Germany, Hungary, Italy, Poland, Spain and Slovenia.

**Wednesday, 30.08.2017 | 09:00 – 10:30 | Room PB.2.5**

**SP03:** *The Sociology of Sustainable Food Consumption* with Julie Guthman and Lotte Holm

Session Chairs:

Peter Oosterveer, Wageningen University

Stefan Wahlen, Wageningen University and Research

**Julie Guthman**, University of California, United States of America

*Forked: On the Limits of Shopping for Sustainability and Towards a Food Activism That Matters*

The theory of change driving sustainable food consumption is that consumers should pay more for food that is produced more ethically and ecologically. The market will then respond to changes in consumer demand and eventually food production will transform to be more sustainable and just. Drawing on her research on California's organic and strawberry industries, Professor Guthman will problematize this theory of change, spelling out some of the limits of approaches that depend on consumer purchasing. She will give particular attention to the paradoxes of voluntary food labels in times of economic recession. Her talk will culminate with a discussion of what food politics could and should look like in the age of Donald Trump.

**SHORT BIOGRAPHY:**

Julie Guthman is a geographer and professor of social sciences at the University of California at Santa Cruz where she teaches courses primarily in global political economy and the politics of food and agriculture. She has published extensively on contemporary efforts to transform food production, distribution, and consumption, with a particular focus on the race, class and body politics of "alternative food." Her publications include two multi-award winning books: */Agrarian Dreams: the Paradox of Organic Farming in California/*, */Weighing In: Obesity, Food Justice and the Limits of Capitalism/*, and a recently released edited volume entitled */The New Food Activism: Opposition, Cooperation, and Collective Action/*. She is the recipient of the 2015 Excellence in Research Award from the Agriculture, Food and Human Values Society, and has received fellowships from both the John Simon Guggenheim Memorial Foundation and from the Radcliffe Institute for Advance Study for 2017-2018. Her latest research has examined the effects of the methyl bromide phase-out on California's strawberry industry.

**Lotte Holm**, University of Copenhagen, Denmark

*Coping with Economic Restraint: Everyday Food Consumption Practices And Environmental Sustainability*

Most research on household's reactions to food budget restraint address low-income groups in countries characterised by large socio-economic differences. In the Western world, such studies have mostly been conducted in Anglo-Saxon countries, while in Scandinavian societies, such as Denmark, it has been maintained that the Social-Democratic welfare regime ensures that no-one needs to be deprived of basic necessities such as food. However, following the global capitalist crisis in 2008, broader parts of the population experience economic unrest and various degrees of

pressure on food budgets have become more common in Danish households.

In Denmark, sustainable food consumption is high on the political agendas and organic food purchase is the highest in the world. But what happens when people react to economic turbulence and attempt to reduce food expenditure? I will discuss results from a Danish project which analyses how households cope with economic restraint. The project Food in Turbulent Times combines in-depth qualitative inquiry with analyses of panel data and a representative survey of Danish households. The focus will be on how pressure on food budgets is experienced and handed in different social contexts, and how differentiated household food consumption relates to sustainability and climate change. The significance of attitudes towards climate friendly food consumption relative to routinized food consumption practices will be highlighted, as will relations between climate friendly and healthy food consumption practices.

#### SHORT BIOGRAPHY:

Lotte Holm, PhD and MSc in Sociology, is Professor at the Department of Food and Resource Economics, University of Copenhagen. Dr Holm's research centers around food and eating ranging from comparative population studies of changing eating patterns in modern life to in-depth qualitative investigations of e.g. the multiple meanings of food, food and gender identity, lay perceptions of food and health and risk, obesity and bodyweight management. I was a partner in the Trust in Food project which investigated institutional change in the food safety regulatory systems in EU and six European countries following the BSE crisis. Her recent projects include Governing Obesity, addressing specific experiences of individuals subjected to different kinds of obesity interventions, Food in Nordic everyday Life, analysing changes in everyday eating rhythms and patterns in four Nordic countries, and Food in Turbulent Times, focusing on food budget restraint in Denmark.

### **Wednesday, 30.08.2017 | 09:00 – 10:30 | Room PC.1.7**

**SP04:** *Questioning Boundaries of Age and Place: Child Refugees in an Uncertain Europe* with Pascale Garnier and Rachel Rosen, Sarah Crafter

Session Chairs:

Nigel Thomas, University of Central Lancashire

Griet Roets, Ghent University

**Pascale Garnier**, University Paris 13, France

*“Children of Calais”: Precarious Lives Between French and English Borders*

Since the beginning of November 2016, the jungle of Calais has been dismantled and around 1.900 “un-accompanied children” have been obliged to leave it. Most of them have been sent to the “centres d’acceuil et d’orientation” (CAO, reception and guidance centre) recently opened in France and some of them have been accepted into England. This presentation aims to highlight how children’s lives are highly vulnerable in a situation of liminality, a concept introduced by Van Gennep (1908), as the core stage of the “rites of passage”, characterized by the ambiguity or confusion of the identities of people between separation and integration. This situation of liminality involves three dimensions: the

liminality of space between borders of national states, the liminality between the absence and presence of their family, which emphasize the liminality of their age, as “children” and “not children”. Together they give rise to an unliveable life as human beings.

As “un-accompanied” minors, children are at the same time inside and outside their family, having to live independently and to take responsibility for their own lives, but at the same time they are dependent or claiming that they belong to a family. To be a child means to have his/her identity rooted in one’s family, in terms of social class, nationality, race and ethnicity, religion and culture, including the various meanings of age and family in his/her culture. This situation of liminality between being with and without a family, between dependency and independency troubles the binary dichotomy between children and adults.

#### SHORT BIOGRAPHY:

Pascale Garnier’s PhD (EHESS, Paris, 1992), under the supervision of Luc Boltanski, was about an historical sociology of childhood in France, analysing how competences and best interests of children are matter of debates and tests. Within a pragmatic approach of children’s life, adults’ practices and material culture, her researches consider age categorizations as political and moral orders. Recent publications: “Childhood as a Question of Critiques and Justifications”, *Childhood*, 21(4), 2014); “Between young children and adults: practical logic in families’ lives”, in L. Alanen, L. Brooker & B. Mayall (eds.), *Studying Childhood with Bourdieu*, 2015); “For a pragmatic approach of children’s citizenship”, in H. Warning & K. Fahnøe (eds.), *Lived citizenship on the edge of society*, forthcoming); *Sociologie de l’école maternelle* (PUF, 2016); *Recherches avec les jeunes enfants: perspectives internationales* (avec S. Rayna, P. Lang, 2017). She is professor in education sciences, head of the research team *Expérience*, in Paris 13 University, Sorbonne Paris Cité.

**Rachel Rosen**, University College London, United Kingdom &

**Sarah Crafter**, Open University, United Kingdom

*Media Representations of Child Refugees: From Dubs to Doubt*

The image of Alan Kurdi, the Kurdish-Syrian toddler and refugee who drowned in the Mediterranean, galvanised an international outcry following its widespread circulation by global media outlets. This is considered the moment when the ‘horrific human costs’ of migration hit home for the European public (Daily Mail, 2015). Concurrently, there are concerns about rising right-wing populism and anti-migrant sentiment, with the media both documenting and instigating such views (Bleich, Bloemraad et al. 2015). In this paper, we consider ambivalent media representations, focusing specially on separated migrant children. We analyse coverage in five English tabloids between the introduction of the 2016 Dubs Amendment, which committed to relocating an unspecified number of unaccompanied minors to the UK, until the demolition of the refugee camp in Calais, where much media attention focused on the plight of children. Drawing on Crawley (2011), we suggest that child refugees are, on the one hand, represented as vulnerable and in need of saving and, on the other, treated as a risk and a problem to British society and institutions for reasons of both security and cost. We argue that the media can simultaneously sustain such contradictory views by preserving an essentialised view of the child, grounded in racialized, Eurocentric and (neo)liberal norms. By taking a temporal view of tabloid coverage, we highlight the increasing contestation of the authenticity of child refugees as they began arriving in the UK under Dubs, and raise questions about the political

implications of framing hospitality in the name of 'the child'.

#### SHORT BIOGRAPHIES:

Rachel Rosen is a Lecturer in Childhood at UCL Institute of Education. Her research spans sociology of childhood and materialist feminist thought, with a focus on unequal childhoods, migration and social reproduction. She is co-author of *Negotiating Adult-child Relationships in Early Childhood Research*, which develops a Bakhtinian ethics of answerability, and is currently co-editing *Feminism and the Politics of Childhood: Friends or Foes?*

Sarah Crafter is a Senior Lecturer at The Open University. Her theoretical and conceptual interests are grounded in sociocultural theory, transitions, critical or contested ideas of 'normative' development and cultural identity development. Her recent work focused on the practice of child language brokering (translating and interpreting for parents who do not speak the local language following migration).

Currently, Rosen and Crafter are collaborating on research about separated child migrants' experiences of care, and caring for others, as they navigate the complexities of the UK's asylum-welfare nexus.

### **Wednesday, 30.08.2017 | 11:00 – 12:30 | Room PD.2.34**

**SP05: *Anatomy of the Greek Crisis* with Maria Petmesidou and Nicos Mouzelis**

Session Chair:

Sokratis M. Koniordos, University of Crete

**Maria Petmesidou**, Democritus University of Thrace, Greece

*Welfare Reform in Greece: A Major Crisis, Crippling Debt Conditions and Stark Challenges Ahead*

The presentation tracks the unfolding of the Greek crisis and examines the main policy reform options in the context of the conditions imposed by the "rescue-deals". A raft of significant reforms since 2010 in labour market policies, social insurance and health and social care are assessed according to whether and to what extent fiscal consolidation has been balanced with concerns about improving protection and redressing inequalities, or whether standards of social protection have been forced ever lower.

Undoubtedly, neo-liberal austerity is the mantra of social adjustment under the successive bailout agreements. A "fightback" stance rejecting austerity and its neo-liberal assumptions in an attempt to reassert neo-Keynesianism acquired broad political significance with SYRIZA's rise to power, which tapped into the discontent resulting from the harsh austerity measures. However, the government's failure to translate the anti-austerity stance into a realistic economic policy and negotiate a better deal for Greece seriously narrows the scope for reform towards a sustainable redistributive welfare state.

The major questions raised are: How will the ongoing reforms impact upon the social structure, social cleavages and conflicts? More importantly, how will they impact on the large middle class strata in Greek society? Will the outcome be "a race to the bottom" in wages and social welfare? Could, instead, a socially-embedded form of liberalization and flexibilisation be followed (for example, along

the lines of social investment)? These issues are examined in the light of a broader debate on welfare transformation in Europe and the changing socio-political cleavages and solidarities.

**SHORT BIOGRAPHY:**

Maria Petmesidou (Ph.D. Oxford University) is Professor of Social Policy at Democritus University (Greece) and Fellow of CROP/ISSC (Comparative Research on Poverty/International Social Science Council). She has published extensively on social policy and welfare reform in Greece and Southern Europe. Most recently she co-edited the books: *Economic crisis and austerity in Southern Europe: Threat or opportunity for a sustainable welfare state?* (London: Routledge, 2015) and *Child poverty and youth (un)employment and social exclusion* (Stuttgart: Ibidem, 2016). She is co-ordinating research on policy learning and transfer in the field of youth employment policies (funded under the EC FP7 programme).

**Nicos Mouzelis**, London School of Economics and Political Science, United Kingdom

*The Crisis in Europe and Greece: The Impact on Identities*

The presentation analyses the basic developments leading to the crisis; as well as the impact these developments had on the “de”construction of European identities.

**SHORT BIOGRAPHY:**

Nicos Mouzelis is Emeritus Professor of Sociology, London School of Economics. He has written extensively in the sociology of organizations (*Organization and Bureaucracy*, Routledge & Kegan Paul, 1967), sociology of development (*Modern Greece: Facets of Underdevelopment*, Macmillan, 1978; *Politics in the Semi-Periphery: Early Parliamentarism and Late Industrialisation in the Balkans and Latin America*, Macmillan, 1986); social theory (*Post-Marxist Alternatives*, Macmillan, 1990; *Back to Sociological Theory*, Macmillan, 1991; *Sociological Theory: What Went Wrong?*, Routledge, 1995; *Modern and Postmodern Social Theorising*, Cambridge University Press, 2008), and sociology of religion (*Modernity and Religion: Secularization, Fundamentalism, Ethics (in Greek)*, Polis, 2014).

**Wednesday, 30.08.2017 | 11:00 – 12:30 | Room PC.1.7**

**SP06:** *(Un)Making Europe* with Stefan Immerfall and Kostas Maronitis

Session Chair:

Kathrin Komp, Helsinki University

**Stefan Immerfall**, University of Education at Schwäbisch Gmünd, Germany

*Keeping Unity, Preserving Diversity: European Possibilities Beyond Integration Overextension*

How to stop Europe drifting apart? To simplify, two therapies to get out of this quagmire circulate: “less Europe” and “more Europe”.

There are serious problems with both visions. “Less Europe” could mean little or no Europe in the

end. As Prime Minister Cameron's botched referendum strategy aptly demonstrated, opening up Pandora's Box of public sentiment may easily backfire. The second proposal is even less likely. European politicians are understandably loath to put any constitutional change before the electorate. Implementing a financial and social redistribution system of any serious size would cause massive opposition.

My presentation takes a distinct sociological approach for analysing the European integration crisis. Such an approach focuses on the societal basis of European integration and on the relationship between societal and political integration. It is heavily indebted to historical comparativists like Stein Rokkan and their work on the structuring of territorial politics. How, then, to strike a balance between the needs of diversity and the need to form a coherent whole?

The European Union is a union of nation-states with long and variegated histories which continue to show in welfare institutions, economic styles and political cultures. A unified regulatory scheme does not comply with the historically entrenched diversity between Europe's macro-historical regions and the lingering power of its nation-states as a locus of attachment. The task is to organize integration on the basis of Europe's diversity and not against its diversity. Examples of flexible rules, strategies and institutions to accommodate European diversities will be discussed.

#### SHORT BIOGRAPHY:

Stefan Immerfall is Professor of Sociology at the University of Education at Schwäbisch Gmünd and founding Director of its Master Program on Intercultural Studies. He has taught at the Universities of Passau, Mannheim, Grand Valley (Michigan, USA) and North Carolina at Chapel Hill (USA). His main research interests cover education, health and well-being, and comparative social and economic analyses. Immerfall's book publications include the "Handbook of European Societies. Social Transformations in the 21st Century" (with Göran Therborn) and "Freizeit" ("Leisure", with Barbara Wasner). He currently works on the revised edition of his textbook "Europa – politisches Einigungswerk und gesellschaftliche Entwicklung" [Europe – political unification and social developments].

**Kostas Maronitis**, Leeds Trinity University, United Kingdom

*Is this the End of Federalism? The Immigration Crisis and the Remaking of Europe*

This presentation argues for a new theoretical framework regarding the emerging structure of the EU through the prism of the current immigration crisis.

Greece provides the empirical material for this paper. Located at the borderlands of the EU, Greece occupies a strange position between federalism and inward looking social formations where membership depends on blood relations. Drawing on policy documents (Dublin Regulation; Refugee Centres and Hotspots; Refugee Relocation System) and on the political rhetoric of sovereignty and border control the paper introduces the concept of Europia. Europia shifts the debate from the binary of Federalists and Eurosceptics to the capacity of immigration to create utopian and dystopian visions about the European project. Europia exists between the sociological analysis of immigration and an imaginary future of the EU viewed through the prism of hope and crisis. As a result, Europia serves as an analytical tool for a series of actions and mentalities concerning the way immigration authorities construct dystopian environments for immigrants and refugees; the way states understand cultural homogeneity as a political utopia; the way the arrival and presence of immigrants



contributes to a dystopia of a torn social fabric; and the way immigrants and asylum seekers view Europe as a utopia of prosperity, rule of law, and freedom.

The presentation concludes by arguing for a renewed understanding of European citizenship independent of national belonging that will ultimately democratize the EU.

#### SHORT BIOGRAPHY:

Kostas Maronitis is Lecturer in politics and media at Leeds Trinity University, UK. His research interests focus on the political theory and policies of immigration and European integration. He has published articles on immigrant detention and human rights, networks of protest, cosmopolitanism and citizenship, the politics of fear, and diasporic cultural practices. Kostas Maronitis is the author of the book *Postnationalism and the Challenges to European Integration in Greece: The Transformative Power of Immigration* (2016) published by Palgrave MacMillan.

**Wednesday, 30.08.2017 | 11:00 – 12:30 | Room PC.2.14**

**SP07: (Un)Making Capitalism with Lara Monticelli and Paul Raekstad**

Session Chair:

Christian Fuchs, University of Westminster

**Lara Monticelli**, Scuola Normale Superiore, Italy

*Embodying the Critique to Capitalism in Gloomy Times. Theoretical Perspectives and Potential Research Horizons on Emerging 'Real Utopias'*

In recent years, terms like 'sharing economy', 'industry 4.0', 'collaborative economy' have become the buzzwords in academic research and public debate – gaining prominence in tandem with the growth of digital capitalism. While much has been said about the ways in which digital technology is transforming entire swathes of the economy and constructing new forms of exchange, the predominant tendency has been the reification and expansion of modern capitalism, aimed at maximizing profits and reproducing exploitative mechanisms towards workers, natural resources and the environment. Within this critical juncture in the development of capitalism cooperatives, political consumerism and alternative lifestyles are being adopted and advocated by a growing number of social groups.

Moreover, recent contributions like Erik Olin Wright's 'Envisioning Real Utopias' (2010), Hartmut Rosa's reflections on acceleration and de-synchronisation in contemporary capitalism (2010), Klaus Dörre and colleagues' 'Sociology, Capitalism and Critique' (2015) and D'Alisa et al. 'Degrowth. A Vocabulary for a New Era' (2015), among others, are giving a new momentum to concepts like 'resilience', 'real utopias', 're-politicisation' of everyday life, 'de-colonisation of the imaginary' and 'transition'. These emerging themes are influencing the academic discourse and research agenda in fields like political economy, sociology and social movements studies. In light of this, the paper attempts to provide with an original theoretical framework focusing on collective and community-based practices that aim at 'embodying' the critique to consumerist and capitalist societies. These include co-housing, eco-villages, intentional communities and transition towns which are

increasingly widespread and inter-connected examples of how people are trying to concretize, not without effort, 'real utopias' (Wright 2010).

**SHORT BIOGRAPHY:**

Dr Lara Monticelli is currently an independent research fellow, awarded by the FBML Foundation (Italy), working on her project titled 'Laboratories of Change' in collaboration with researchers at the Dutch Research Institute for Transitions in Rotterdam. The project focuses on the (re)emergence of community-based social movements (e.g. intentional communities, eco-villages, transition towns) as living laboratories experimenting with practices of resilience and resistance to environmental, economic and societal challenges. She is especially interested in how these movements politicize and re-configure everyday life, thus representing radical attempts to embody the critique to contemporary capitalism. She has also co-founded and co-chaired two international conferences, creating a vibrant forum for the discussion of this emerging research agenda at the annual SASE meetings (Berkeley 2016, Lyon 2017). Prior to this, she worked as a post-doctoral research fellow at the Institute for Humanities and Social Sciences at Scuola Normale Superiore di Pisa (Italy). Her other research has been centered on the study of non-conventional political participation, and combines perspectives from the sociology of work, social movement and political participation studies.

**Paul Raekstad**, University of Amsterdam, Netherlands

*Freedom, De-Alienation, and Revolution*

This paper examines the theory of alienation and its implications for thinking about social revolution to unmake capitalism. After briefly discussing the importance of the theory of alienation to different forms of contemporary anarchist and Marxist theory and practice, I reconstruct Marx's theory of alienation as a diagnosis of how capitalism thwarts human freedom. This in turn raises important questions about the requirements of successful de-alienation – a question rarely given the attention it deserves. A politics of de-alienation requires, I argue, not only rejecting capitalism and the state, but also a commitment to prefigurative politics. Prefigurative politics is necessary for developing revolutionary subjects with the powers and capacities, motivations, and consciousness required for replacing unfree, alienated social relations and institutions with free and unalienated ones. Finally, I compare and assess three contemporary models of de-alienation: the autonomist Marxist model of John Holloway; the more state-involved model of 21st Century Socialism; and the anti-statist model of anarcho-syndicalism. All three provide models of de-alienation that stress the importance of prefigurative politics in some sense, but each suffers from distinct shortcomings. Holloway's autonomist model fails to provide an adequately social conception prefigurative politics; 21st Century Socialism faces concerns about the long-term viability of combining prefigurative economic and political microcosms with retaining hierarchical state structures; and anarcho-syndicalism confronts questions about lacking emphases on institutions of transition – rather than just struggle – and inadequate recognition of community organising. Nevertheless, I argue that an updated anarcho-syndicalist model offers the most plausible vision of anti-capitalist struggles of de-alienation.

**SHORT BIOGRAPHY:**

Dr. Paul A. Raekstad is a Postdoctoral Research Fellow at the University of Amsterdam, who

previously completed a PhD and lectured at the University of Cambridge. Current research focuses on realism, democracy, the legitimacy of economic institutions, and radical political theory more broadly. Works can be found here:

<https://amsterdam.academia.edu/PaulRaekstad>.

Key works:

Raekstad, P. Accepted. Revolutionary Practice and Prefigurative Politics: A Clarification and Defence. *Constellations*.

Raekstad, P. Forthcoming. Realism, Utopianism, and Radical Values. *European Journal of Philosophy*.

Raekstad, P. Forthcoming. Democracy Against Representation: A Radical Realist View. *Abolition: A Journal of Insurgent Politics*.

Raekstad, P. Forthcoming. Human Development and Alienation in the Thought of Karl Marx. *European Journal of Political Theory*.

Raekstad, P. Forthcoming. The Democratic Theory of the Early Marx. *Archiv für Geschichte*.

### **Wednesday, 30.08.2017 | 11:00 – 12:30 | Room PB.2.5**

**SP08:** *(Un)Making Solidarities* with Ipek Demir and Pekka Juhani Sulkunen

Session Chair:

Marta Soler-Gallart, University of Barcelona

**Ipek Demir**, University of Leicester, United Kingdom

*(Un)Making Europe: How to make sense of the contemporary 'politics of resentment'?*

My paper will discuss the (un)making of Europe in the context of contemporary issues over difference in Europe. It will rethink the relationship between diasporas, cosmopolitanism and multiculturalism in order to make sense of identity, difference, conflict, crisis and resistance in contemporary Europe, including the 'politics of resentment' which governs the European social and political sphere.

There is currently a growing opposition to both multiculturalism and to cosmopolitan ideals in Europe. The backlash against multiculturalism is accompanied by an anti-immigration and nationalist sentiment, challenging cosmopolitan values. The 'threat' from one is conflated with the other, presented as a menace poised against, and ready to puncture, European identity, culture, civilization and values.

However, rather than seen as bedfellows, cosmopolitanism and multiculturalism have come to be constructed as adversaries. Many social commentators and scholars appeal to cosmopolitanism's Enlightenment origins, taking Kant's theories on cosmopolitanism as a basis. Cosmopolitanism is what the desirable Europeans did and aspired to; the 'undesirable' 'parochial' ethno-religious communities of Europe, on the other hand, did something we did not like very much: they did multiculturalism. What is interesting is that this backlash against multiculturalism did not only come from the usual suspects. Sociologists, for example, Beck (2011: 54), Delanty (2011: 650), and Glick-Schiller et al (2011: 401) have also been critical of multiculturalism, or used multiculturalism as a foil when defending cosmopolitanism (See Demir 2016 for a criticism of this). This juxtaposition of

cosmopolitanism against multiculturalism is all the more perplexing given that both cosmopolitanism and multiculturalism question the upper hand that the hegemonic national subjects hold, and attempt to increase the participation of all, including minoritized groups, as equal civic and political citizens within and across nation-states. Debates on Brexit and immigration have tapped into this existing dislike of multiculturalism (and the associated loss of privilege). This is borne out with numbers we have on Brexit which show that multiculturalism tops the list of social ills for Brexiters (81%) over and above immigration (80%) – even if slightly. In my paper I will explore such issues, including the extent to which resistance to both cosmopolitan values and multiculturalism we see in Europe today can be seen as a deep yearning for an old Europe where people knew their place, especially the immigrants, or non-whites or those from the colonies. I will attempt to uncover how without a proper understanding of the backlash against multiculturalism and racial diversity in Europe, we cannot make sense of contemporary Europe, including its making and unmaking.

#### SHORT BIOGRAPHY:

Ipek Demir (PhD, Sussex) is an Associate Professor in Sociology at the University of Leicester, UK. She was previously an ESRC Postdoctoral Fellow at the University of Cambridge. Demir's work sits at the intersections of the fields of diaspora studies, ethno-politics, race and identity, nationalism, indigeneity, global politics as well as social and critical thought. She has carried out empirical research on Kurdish and Turkish diasporas, funded by the AHRC. Her latest article is entitled: 'Shedding an Ethnic Identity in Diaspora: De-Turkification and the Transnational Discursive Struggles of the Kurdish Diaspora', published in *Critical Discourse Studies* (Feb 2017). She is the founder and co-coordinator of BSA's Diaspora, Migration and Transnationalism Study Group and the former Vice-Chair of ESA's Sociology of Migration Research Network.

**Pekka Juhani Sulkunen**, University of Helsinki, Finland

*Causality or Justice? Contradicting Principles of Regulating Problematic Consumption in Consumer Society*

Evidence-based public policy usually requires proof of causality as its justification. The causes of problems must be identified and demonstration of the effectiveness of specific measures is a condition for their application. "What works?" is a standard requirement for regulation of problematic lifestyles or consumption. The requirement of causality is often in a strange contradiction with justice. In many lifestyle issues such as excessive eating, gambling, drinking or other behavioural problems causality usually cannot be demonstrated. We do not know, for example, whether poverty is a cause or a consequence of gambling, overconsumption of food, drink or other deleterious consumption patterns. Neglect of policy in these cases means violation of our intuitive concept of justice. This paper applies Adam Smith's theory of justice to deal with the problem. In his *Theory of Moral Sentiments* he advances the idea that justice is the fundamental moral sentiment for the maintenance of social order and solidarity. It is based on the passion of anger but must be qualified and regulated by reason. The paper argues that justice rather than causality should take priority in social policies that aim at social cohesion and order.

**SHORT BIOGRAPHY:**

Pekka Sulkunen is Professor Emeritus of Sociology, University of Helsinki. He was President of the European Sociological Association 2011-2013. He is a member of the Finnish Academy of Science and Letters. His research interests are the public sector governance, power and democracy, social theory, and addictions. Recent publications include: *The Saturated Society* (Second Edition 2016); *Society on its own. The sociological promise today* (European J. of Cultural and Political Sociology 2014); *Autonomy against Intimacy* (Telos 156/2011); *The Kurdish Question: The Black Holes of Democracy* (Telos 171/2015). *The Consumer Society and the Social Bond: the Neoliberal Turn in Norway* (2015); *The Images Theory of Addiction* (2015). Currently lecturing on “The sociological promise from the Enlightenment to Postmodern Critics”. Principal author of an international collaborative book *Gambling, Science and Public Policy* (Oxford University Press, forthcoming 2018).

**Wednesday, 30.08.2017 | 11:00 – 12:30 | Room PA.1.1**

**SP09:** *(Un)Making Subjectivities* with Anastasia Denisova and Nayia Kamenou

Session Chair:

Monica Massari, University of Naples Federico II

**Anastasia Denisova**, University of Westminster, United Kingdom

*Viral Storytelling and Subjectivity in Social Networks: How Personalised Contributions via Memes, Gifs, Hashtags and Comments Affect the Deliberation of Mainstream and Alternative Politics*

Since the proliferation of social networks a few decades ago, users have embraced new modes of storytelling and discussing social and political grievances online. In addition to blogging, microblogging, commenting, liking and sharing, they have also started to exploit the more fragmented bits of communication, namely Internet memes, gifs, hashtags and other seemingly “incomplete” texts.

Brexit and the US presidential campaign of the 2016 saw the use of memes in both traditional and digital politics – politicians employed memes to attract audience to their discourses; whilst other voices were emerging online, aiming to ride the waves of user-generated vitality on social networks and resists to the dominant discourse.

This research studies the impact of viral storytelling and digital communication on the political discourses in social networks. It amalgamates the studies on the attention deficit that has been identified among the Internet publics in the 2010s, emotional storytelling for political activism, affective publics and creative emotional deliberation of politics in the digital space. It also aims to draw the links between the personalised expressions of grievances and opinions, to the formation of collective mobilisations and narratives. This approach aims to link the existing studies on affective publics, alternative political activism and digital storytelling with the need to acknowledge the blurring lines between personalised and collective political discussions; understanding the ways how individualised subjectivities turn into mainstream yet often reverberate back into subcultures.

**SHORT BIOGRAPHY:**

Dr Anastasia Denisova is a Lecturer in Journalism at the Communication and Media Research Institute (CAMRI), University of Westminster. Before starting her academic career, she worked as a journalist in Russia for over a decade; she keeps writing for the Independent, Global Voices and other media platforms. Anastasia has published her academic research on alternative digital politics, microbloggers, satire and Internet memes in *Media, Culture & Society*, *Demokratizatsiya*, *Comparative Sociology*, among others. She received awards for best presentations at academic conferences (such as Oxford Internet Institute's recognition). Currently, she is looking at viral cultures and memes in the Western digital politics; the role they play in propaganda, populism and citizen deliberation. For further information you can visit Dr Denisova's personal webpage.

**Nayia Kamenou**, De Montfort University, United Kingdom

*On Precariousness and Emancipation: Female Political Subjectivities and Agency in the Greek Far-Right*

Why do women join far-right parties? How do they position themselves in relation to their party's ideology? What is the impact of their political agency on party ideology, organization, structure, and strategies? Answers to these questions are important for fully understanding the current thriving of a much-dangerous phenomenon that threatens hard-won democracy. This article offers novel responses to these questions through the study of the Greek Golden Dawn (GD), as one of the far-right parties in Europe that have been successful at recruiting women. It links party politics and gender and politics literature by examining GD women's political subjectivities and agency. It employs a women-centered, close-up, internalist approach to the study of the topic and a qualitative research design. It thematically analyzes empirical ethnographic data from participant observation and interviews with GD women politicians and seasoned activists and documents that appear on the GD's official website and on the blog of the GD Women's Front. It challenges arguments that women are affiliated to far-right parties through men. It shows that GD women have managed to construct a catch-all, flexible, and coherent gender discourse that is becoming central to GD's ideological and policy positions. It also highlights the ways through which gender is employed by the far right to augment its support base, especially when structural conditions are ripe. Therefore, it argues that such gender discourse could lead to an increase in the popularity and support of far-right parties among women and men with diverse views about gender and politics, both in Greece and elsewhere.

**SHORT BIOGRAPHY:**

Dr Nayia Kamenou is a VC2020 Lecturer in the School of Applied Social Sciences at De Montfort University, Leicester, United Kingdom. Dr Kamenou's research is interdisciplinary and cuts across political science, sociology and gender studies. Her research interests include gender, sexuality, and political agency. She conducts research and has published work on the interrelations between nationhood, ethnic identities, gender, and sexuality; the impact of Europeanization on lesbian, gay, bisexual, trans\*, queer, and intersex rights, identities, and activism; women's participation in far-right parties and the formation of gendered political agency and identities within the far right; women's role in peace-building processes; representations of gender and sexual identities in cinema; the impact of law and policy on trans\* identities and political mobilization. Dr Kamenou's work is firmly committed to political and social concerns and to the development of possible interventions for their resolution.

**Friday, 01.09.2017 | 09:00 – 10:30 | Room PD.2.34**

**SP10: *Right-Wing Extremism and Islamist Extremism in Europe: Similarities and Differences*** with Esther Webman and Zbyněk Tarant

Session Chair:

Karin Stögner, University of Vienna

**Esther Webman**, Tel Aviv University, Israel

*Islamism's Manichean Vision and the Jews*

In his analysis of classical and contemporary perspectives on antisemitism, Sociologist David Norman Smith shows that antisemitism is a social construction of Jews as enemies. He adopts Norman Cohn's assertion that "the deadliest form of antisemitism...has little to do with real conflicts of interest between living people, or even with racial prejudice as such...[It is] rather a conviction that Jews – all Jews everywhere in the world – form a conspiratorial body set on ruining and then dominating the rest of mankind." This teaching appeared to be specifically modern, forming a decisive extension of the late medieval view that Jews are "mysterious beings, endowed with uncanny, sinister powers." Everyday religious and cultural strife had given way to a global dualism, a Manichean vision of a world divided between Jewish evil and Gentile good.

I adopt Smith's contention to argue that the Islamist worldview is typical to the Manichean vision of a world, and show that Islamism is an apocalyptic ideology which seeks to redeem the world from the ills of modernism, capitalism, imperialism, and the Jews, perceived as the embodiment of all things anti-Islamic. It reinforces a dichotomous worldview of good and evil, believers and non-believers, the House of Islam and the House of war, which can be reconciled only with the ultimate victory of Islam.

**SHORT BIOGRAPHY:**

Dr. Esther Webman is the head of the Zeev Vered Desk for the Study of Tolerance and Intolerance in the Middle East, and a senior research fellow at the Dayan Center for Middle Eastern Studies and the Stephen Roth Institute at Tel Aviv University. Her research is focused on Arab discourse analysis, mainly Arab Antisemitism and Arab perceptions of the Holocaust. She has published extensively on these topics and participated in numerous conferences. Her book, *From Empathy to Denial: Arab Responses to the Holocaust*, co-authored with Prof. Meir Litvak, won the Washington Institute for Near East Policy's Gold book prize for 2010, and was published in Hebrew in 2015.

**Zbyněk Tarant**, University of West Bohemia, Czech Republic

*Attitudes of the Czech Far-right Scene to Islam, Islamism and Islamophobia*

My presentation explores the various attitudes of the Czech Neo-Nazis towards the various actors, states and peoples of the Muslim world. The presentation is intended to raise issues that might become crucial for the debates about national security and possibilities of collusion between the far-right and the Islamist movements. For this purpose, I will use an interdisciplinary approach that includes anthropological fieldwork, social network analysis (SNA) and methods of qualitative analysis of electronic and printed far-right propaganda materials. My goal is to describe the surprising diversity of attitudes by the Czech far-right that could range from open hostility to a more or less

disguised affinity. By exploring the conflicting images of Muslims in the neo-Nazi thought ("immigrants" vs. "anti-Zionist fighters"), my presentation will name the factors that might be responsible for policymaking of the far-right about the muslim cultural space. This allows me to define the theoretical conditions, under which certain mutual cooperation between the neo-Nazis and the Islamist movements could or could not be possible. I will describe the neo-Nazi version of ethnopluralism that enables the neo-Nazis and other far-right movements to support the regime of Bashar al-Assad in Syria, or the Hizballah movement in Lebanon, while maintaining their strong anti-Immigration agenda. Further exploration of anti-immigration rhetorics will show how islamophobia is being connected and misused for the purpose of antisemitism and what do such accusations reveal about foreign inspirations and broader geopolitical perspectives of the Czech antisemitic scene.

#### SHORT BIOGRAPHY:

Zbyněk Tarant, Ph.D. was born in 1982 in the former Czechoslovakia (today's Czech Republic). After graduating at the University of West Bohemia in the field of Cultural Anthropology of the Near East, he continued his studies at the same institution, where he got his Ph.D. in 2012. While his main topic of research is the history of holocaust memory and its institutions in the State of Israel and the USA (the theme being the topic of his dissertation, defended in 2012), he became actively involved in the research of contemporary antisemitism since 2006. His specialty is monitoring of cyber-hate and analysis of emerging threats in the contemporary Central European antisemitism.

#### **Friday, 01.09.2017 | 09:00 – 10:30 | Room PC.1.7**

**SP11:** *Care Labour and Affective Labour in the Global Care Chain* with Konstantina Davaki and Lise Widding Isaksen

Session Chairs:

Maria Carmela Agodi, University of Naples Federico II

Michael Meuser, TU Dortmund

**Konstantina Davaki**, London School of Economics, United Kingdom

*On the Global and Local Intersections of Care and Technology-Assisted Reproduction: Internet-Mediated Surrogacy in Greece and Cyprus*

This presentation examines issues of surrogacy in the context of two EU countries (Greece and Cyprus) which share significant characteristics. Both are or have been subject to EU-imposed austerity programmes; both are entry points to Europe; finally, they are the only EU member states which allow altruistic surrogacy.

The presentation analyses the impact of recession and austerity policies on the supply of surrogate mothers in the two countries for commercial purposes.

The presentation will focus on the narratives of prospective surrogates and intended parents involving the notions of solidarity, altruism, sisterhood, as well as the role of the mainstream and social media in informing the public debate on the issue.

To examine the above, the presentation will use desktop research methods to identify websites



providing surrogate services. The content of such websites is expected to give a sense of the extent of online-arranged surrogacy in the two countries. We will also analyse interviews given to the media by gynaecologists and intended parents, available on the web and identify the ways in which the phenomenon is communicated to the media. In addition, through scrutinising the relevant blogs and social media we will attempt to analyse the contributions and comments of the surrogates themselves using critical discourse analysis, so as to identify the perspectives of surrogates and the ways in which their experience is presented online.

#### SHORT BIOGRAPHY:

Dr Konstantina Davaki is Research Fellow in Social Policy at the London School of Economics. Her main research interests are gender, comparative social policy, bioethics, care, work/life balance, violence against women, mental health and welfare ideologies in a globalised world. Since 2010 she has been advising the Committee on Women's Rights and Gender Equality (FEMM) of the European Parliament. Her academic publications include articles in peer-reviewed journals, book chapters and reports: Davaki, K. (2017) 'Surrogacy arrangements in austerity Greece: policy considerations in a permissive regime' in Davies, M. (ed) *Babies for Sale?: Transnational Surrogacy and the Politics of Reproduction*, Zed Books; Davaki, K. (2016) *Demography and Family Policies from a Gender Perspective*, DG IPOL, European Parliament; Davaki, K. (2016) *Differences in Men's and Women's Work, Care and Leisure Time*, DG IPOL, European Parliament; Brunet, L. Davaki, K et al. (2013) *A Comparative Study in the Regime of Surrogacy in EU Member States*, DG IPOL, European Parliament.

**Lise Widding Isaksen**, University of Bergen, Norway

#### *Changing Welfare Regimes and Migrant Care Work*

In this presentation, I will examine how new trends in welfare policies now intersect with gender, employment and migration policies. The local gender egalitarian dual earner/dual carer family model is supported by the welfare state's recruitment of care workers with migrant background and refugees. How migrant care workers' production of care services in Norway might influence gender dynamics in paid and unpaid care work in receiver and sender countries, is an important question for future research.

As the global care chain concept was pioneered in the USA, a context with an absence of collective and public provision of care, the conceptual framework has to be extended when shifting focus to Europe and Scandinavia to include migrants taking jobs in public care services and welfare institutions.

The reconciliation of work and family care is today one of the most pressing problems in most European societies.

As the care work regimes in Nordic contexts are being characterized by the drives for efficiency, productivity and flexibility, work force policies are geared to finding a flexible and available workforce. One result is that present care work regimes increasingly rely on migrant workers; the majority of them are women often arrived in Norway as labour migrants or as refugees. In classic studies of global care chains, the domestic live-in worker is the central individual, while in Nordic context the public employed care worker is becoming the dominant figure.

SHORT BIOGRAPHY:

Professor Lise Widding Isaksen works in the Department of Sociology at the University of Bergen, Norway. Among her research interests are gender issues, globalization, migration, transnational families, care work and welfare/social politics. She has written extensively on gender, migration and power in welfare states, with special emphasis on the social organization of care paid and unpaid care work.

Selected recent publications:

- 1) Lise Widding Isaksen (ed): *Global Care Work. Gender and Migration in Nordic Societies*. Nordic Academic Press, Lund, Sweden.
- 2) Lise Widding Isaksen (2012) "Transnational Spaces of Care: Migrant Nurses in Norway." In *Social Politics, International Studies in Gender, State and Society*, vol. 19, number 1, spring 2012, p.58-78, Oxford University Press, Oxford.
- 3) 'Strangers in Paradise? Italian Mothers in Norway' (2016) in Majella Kilkey and Ewa Palenga-Møllenbeck (eds) *Family Life in an Age of Migration and Mobility. Global perspectives through the Life Course*. Palgrave Macmillan.

**Friday, 01.09.2017 | 09:00 – 10:30 | Room PB.2.5**

**SP12:** *The Transformations of Capitalism in Eastern Europe* with Jan Drahokoupil and Svetlana Stephenson

Session Chairs:

Elena Danilova, Institute of Sociology RAS

**Jan Drahokoupil**, European Trade Union Institute, Belgium

*The Sociology of Economic Dependence: Are East European Countries Stuck in the Dependent Capitalism Model?*

*It is somewhat ironic that the concept of dependence, traditionally associated with the Marxist tradition, has come to dominate the theoretical frameworks that inform economic sociology and political economy of the region that was once labelled as post-communist. This presentation first explores the meaning of political and economic dependence in the light of empirical evidence from the region. It then proceeds by investigating the prospect of the dependent market economies by looking at the dynamism of wage convergence and considering the impact of new technology on the nature of region's integration into global/European value chains.*

SHORT BIOGRAPHY:

Jan Drahokoupil is a Senior Researcher at the European Trade Union Institute (ETUI) in Brussels. He published a number of books and journal articles on European and transition economies, welfare state, and multinational corporations. Jan coordinates research on digitalization at the ETUI. Recently, he edited two special issues of *Transfer: European Review of Labour and Research* on digitalization and the future of work. His book publications include *Globalization and the state in Central and Eastern Europe* (Routledge, 2009), *Transition economies: Political economy in Russia*,

Eastern Europe, and Central Asia (with Martin Myant, Wiley-Blackwell, 2011), The outsourcing challenge: Organizing workers across fragmented production networks (edited, ETUI, 2015), Flexible workforces and low profit margins: Electronics assembly between Europe and China (edited, ETUI, 2016), and Chinese investment in Europe (edited, ETUI, 2017).

**Svetlana Stephenson**, London Metropolitan University, United Kingdom

*Criminal Entrepreneurs and Capitalist Transformation in Russia*

The collapse of the state socialist system and the rise of new capitalist forms in Russia were accompanied by wide-spread illegality and organized criminality. This led to a period of social chaos and lawlessness, which enabled criminal networks to convert their capacity for violence into economic profit. They established their own systems of private protection, the so-called “roofs”, kryshi, using them for primitive accumulation, and competed with the weakened state as agents of violent regulation. While both the strengthening of the state and organized crime actors' own ambitions led to the latter's increasing integration into mainstream economic and political structures, a complex web of interdependencies emerged in which actors from criminal networks and political authorities collaborate using each other's resources.

This fusion and assimilation of members of the governing bureaucracy and members of an aspiring bourgeoisie coming from criminal backgrounds was as much the result of consensus and cooperation as it was of competition and confrontation. Using interview data with members of organized crime groups and representatives of law enforcement agencies, and analysis of secondary data, I argue that instead of a pattern of elimination of Russian organized crime by the state, we can see a mutually reinforcing ensemble that reproduces the existing social and economic order.

#### SHORT BIOGRAPHY:

Dr Svetlana Stephenson is a Reader in Sociology at London Metropolitan University. Her research has involved studying informal and criminal social networks in Russia, as well as perceptions of social justice and human rights in a comparative context. She is the author of *Gangs of Russia, From the Streets to the Corridors of Power* (Cornell UP, 2015), *Crossing the Line. Vagrancy, Homelessness and Social Displacement in Russia* (Ashgate, 2006) and the co-editor of *Youth and Social Change in Eastern Europe and the Former Soviet Union* (Routledge, 2012). Her research was published in *Current Sociology*, *Radical Philosophy*, *Journal of Youth Studies*, *The Sociological Review*, *Europe-Asia Studies*, *International Journal of Comparative Sociology*, *Slavic Review*, *Social Justice Research and Work*, *Employment and Society*, among others. Before coming to the UK, she had worked at the Levada Centre in Moscow.

**Friday, 01.09.2017 | 09:00 – 10:30 | Room PC.2.14**

**SP13:** *Public Sociology and Public Intellectuals in Times of Europe's Crisis* with Markus Schulz and Maria Kousis

Session Chair(s):

Eleni Nina Pazarzi, University of Piraeus

**Markus Schulz**, New School for Social Research, United States of America

*Crisis, Contention, and the Sociology of Possibilities*

How could or should sociology respond to the crisis of the present? What are the competing options, resources, and obstacles? What can the sociology of imagination and possibilities contribute to these debates? This paper starts by discussing the social construction of the “Greek Crisis” in the context of a broader global crisis and a shifting zeitgeist. It contrasts the spectacles of corporate media and the technocratic narratives of political and economic elites with challenges to austerity and emerging alternative visions. On a theoretical level, it argues for the need to connect economic approaches to crises with studies of contentious politics and futures research. Studying stories of crises is studying futures in the making. This entails the forging of decision points and narrative devices that broaden or narrow the choices considered to be within “reason”. The widely diagnosed decline of utopian visions had left a void. Into it seep resentments of disenchantment to an extent that it threatens institutional stability, yet without altering more fundamental power differentials. Deconstructing the enclosures of expectation can help to democratize the imagination of future scenarios. In this sense, a sociology of possibilities offers practical relevance for the democratization of European futures.

**SHORT BIOGRAPHY:**

Markus S. Schulz is Vice-President of the International Sociological Association, President of the ISA Forum of Sociology in Vienna 2016, and founding curator of the online WebForum on The Futures We Want. Professor Schulz's research focuses on globalization, media, movements, and democratic imagination. He is author of the six-volume book series on Internet and Politics in Latin America (Frankfurt: Vervuert, 2003) and editor of the Current Sociology special issues on Values and Culture (2011) and Future Moves (2015). Among his many journal articles are “Collective Action across Borders” (Sociological Perspectives) and “Debating Futures” (International Sociology). Schulz won for his work international distinction, including the ISA's Bielefeld Prize for the Internationalization of Sociology, the Eastern Sociological Society's Candace Rogers Award, and the American Sociological Association's Elise Boulding Award. Schulz has taught at New York University, University of Illinois, Virginia Tech, and the Bauhaus University of Weimar, Germany. He is currently working at the New School for Social Research on a project about “Reclaiming Futures.” For further information visit Markus Schulz's personal website.

**Maria Kousis**, University of Crete, Greece

*Solidarities Confronting Europe's Crises Through Alternative and Transnational Action Organizations*

Solidarities confronting hard times in European spaces have been increasing since the recent economic and refugee crises. This presentation will offer main findings on solidarity initiatives and practices since 2007, which have been produced in LIVEWHAT and TransSOL, two European Commission funded research projects covering solidarity experiences in nine and eight countries respectively. More specifically the presentation will document major features of Alternative Action Organizations as well as Transnational Solidarity Organizations, using fresh data produced with a new method, Action Organization Analysis. Created for the needs of the specific research on solidarity initiatives, the method is based on protest event, protest case and political claims analysis and uses a hubs-website approach to build its randomly selected national samples.

These Action Organizations embody citizens' initiatives and networks of cooperation amongst civil society actors engaging in strategic alternative/solidarity actions in the public sphere, and aiming to provide alternative ways of enduring day-to-day difficulties and challenges under hard times, especially relating to urgent needs (food, health, shelter), the economy, environment, communications, alternative consumption/food sovereignty, self-organized spaces, culture, and others. These initiatives/organizations are not operated or exclusively supported by mainstream economic and political organizations (i.e. corporate, state, or EU related agencies).

The data show that different patterns of solidarity are evident across European spaces unveiling varying organizational types, beneficiaries and participants, solidarity orientations, aims, action types as well as supplementary activities to reach them.

#### SHORT BIOGRAPHY:

Maria Kousis (PhD University of Michigan 1984) is Professor of Sociology and Director of the Centre for Research and Studies in Humanities, Social Sciences and Pedagogics at the University of Crete. Her work focuses on political, economic and environmental contention, as well as social change and impacts of the recent crises. She was coordinator of the EC DGXII project 'Grassroots Environmental Action & Sustainable Development in the Southern European Union' and partner in EC projects including TEA, PAGANINI and MEDVOICES. Publications include 11 edited volumes/books/special issues and more than 60 articles/book chapters, including *Economic and Political Contention in Comparative Perspective* (co-edited with Charles Tilly; Paradigm, 2005). She is more recently involved as partner in the European Commission projects LIVEWHAT and TransSOL where she is leader of work packages on alternative forms of resilience and innovative paths to transnational solidarity, respectively. Furthermore, with Jochen Roose she has co-ordinated the GGCRISI Project on public sphere attributions of responsibility in Germany and Greece (2009-2013) funded by the Greek and German Ministries.

## Summary Table of Mid-Day Specials

	ESA Lecture Series	ESA Discussions	Meet the ...	Special Topics	Author Meets Critics
<b>WEDNESDAY</b> 30.08.2017 12:45 - 13:45	<b>MD01:</b> The Future of Sociological Research (PC.1.7)	<b>MD02:</b> Assessing Sociology - Research and Impact Assessments and their Implications (PE.1.38)	<b>MD03:</b> Meet the Editor: The European Journal of Social Theory at 20 Years (PA.1.1)	<b>MD04:</b> Academic Freedom Under Threat in Europe (PC.2.14)	<b>MD05:</b> Author Meets Critics: Claus Offe's book "Europe Entrapped" (PD.2.34)
					<b>MD06:</b> Author Meets Critics: Jo Littler's book "Against Meritocracy: Culture, Power and Myths of Mobility" (PB.2.5)
<b>THURSDAY</b> 31.08.2017 12:45 - 13:45	<b>MD07:</b> Sociology Today (PC.2.14)	<b>D08:</b> Interdisciplinarity in Times of Budget Cuts and University Restructuring - Advancement or Demise of Sociology? (PB.2.5)	<b>MD09:</b> Meet the Editors: How to Write A Journal Article and Get It Published (PF.1.43)		<b>MD12:</b> Author Meets Critics: Victor Roudometof's book "Glocalization: A Critical Introduction" (PA.1.1)
			<b>MD10:</b> Meet the Funders: Sociology at its best - Everything you want to know about the ERC Grants (PC.1.7)		<b>MD13:</b> Author Meets Critics: Clyde W. Barrow's book "Towards a Critical Theory of the State" (PE.1.38)
			<b>MD11:</b> Meet Civil Society Actors: Migration in Greece (PD.2.33)		

## Mid-Day Specials

**Wednesday, 30.08.2017 | 12:45 – 13:45 | PC.1.7**

**MD01:** ESA Lecture Series (1) - The Future of Sociological Research

*Session Chairs:*

Airi-Alina Allaste, Tallinn University

with

**Michel Wieviorka**, EHESS / FMSH, France

*Present and Future of Sociology. A European Perspective*

This lecture examines some main characteristics of sociology (and other social sciences) today. They exist now in almost all countries all over the world but this doesn't lead necessarily to the decline of « methodological nationalism », following the expression coined by Ulrich Beck.

We should avoid any confusion between comparative approaches, and « global » or « cosmopolitan » ones.

The globalization of social sciences appear also when one considers the issue of language, and the quasi monopoly of English - a very complex question.

There is a contradiction between the reality in most Universities, and the discourses on pluri- or inter- or multi-disciplinarity, and one observes a strong tendency towards more and more specialization, and difficulties for many scholars to participate in rather general debates.

As a member of the scientific council of ERC, I discuss these issues taking into account the perspectives offered by this European institution. My conclusion : at the world level, we are facing now three main models for sociology, and not two : the International one, under anglo-saxon hegemony, the national one which resists to it, and the new European one, first of all with ERC.

### SHORT BIOGRAPHY:

Michel Wieviorka, professor at the Ecole des Hautes Etudes en Sciences Sociales, is the President of the Board of the Fondation Maison des Sciences de l'Homme (FMSH). He was director of the Center for Sociological Analysis and Intervention (CADIS, EHESS-CNRS) between 1993 and 2009. From 2006 to 2010, he was President of the International Sociological Association (ISA) and has been a member of the ERC (European Research Council) Scientific Council since 2014. He was co-director with Georges Balandier of the journal Cahiers Internationaux de Sociologie from 1991 to 2011, and now heads the new SOCIO magazine (with Laetitia Atlani-Duault), which he created in 2013.

His research has focused on the notion of conflict, terrorism and violence, racism, anti-Semitism, social movements, democracy and the phenomena of cultural difference. After having edited the

series "Voix et Regards" at Balland Publishing, he is now in charge of the series "Le monde comme il va" at Editions Robert Laffont, and with Julien Ténédos of the series "Interventions" at Editions de la MSH. His latest book is "The Jews, the Muslims and the Republic", at Editions Robert Laffont.

AIRI-ALINA ALLASTE is Professor of Sociology at Tallinn University and President of the Estonian Sociological Association. As a member of the current ESA Executive Committee, she is the director of the Pre-conference PhD Summer School Workshop in Athens from 27 to 28 August. Her research, publications and teaching focus on youth studies. She has been a national coordinator and working package leader for various international projects and been recently visiting professor at Lisbon University, Portugal; Griffith University, Australia and Åbo Akademi, Finland. She has been responsible organiser of several conferences including 10th Annual Conference of Estonian Social Sciences (Tallinn, Estonia March, 2017).

### **Wednesday, 30.08.2017 | 12:45 – 13:45 | PE.1.38**

**MD02:** Assessing Sociology - Research and Impact Assessments and their Implications

*Session Chair:*

Sue Scott, University of York

with

**John Holmwood**, University of Nottingham, United Kingdom

**Marta Soler-Gallart**, University of Barcelona, Department of Sociology, Spain

*Assessing Sociology: Research and Impact Assessments and their Implications*

This Midday Session will explore the issues raised by the increase in assessment, audit and evaluation in relation to academic research. This process is probably most highly developed in the UK where it began in 1986, but has spread across Europe in various forms, including a range of attempts to measure the social and economic impacts of research. It can be argued that this process has raised the profile of research in Universities and beyond, but also that it has valorized particular forms of knowledge production at the expense of the further development of critical sociological thinking.

#### **SHORT BIOGRAPHIES:**

JOHN HOLMWOOD is Professor of Sociology at the University of Nottingham and Visiting Research Professor at the Institute for Philosophy at the Czech Academy of Sciences. He is a former President of the British Sociological Association and a current member of the ISA Executive and a Managing Editor of Discover Society. He is an active campaigner for public higher education. His talk will look at market-oriented policies designed to enhance the instrumental value of knowledge – ranging from research evaluation audits and policies for co-production of research – and their impact upon the social sciences and the place of sociology within them. It will argue that individualistic, behavioural science is promoted at the expense of critical, social (structural) science.

MARTA SOLER is Professor of Sociology at the University of Barcelona and director of CREA research center on theories and practices Overcoming Inequalities. She is a member of the ESA Council and of the Board of the Catalan Association of Sociology. She is currently the Coordinator of the EU 7th Framework Programme, IMPACT-EV. This project is evaluating the impact and outcomes



of European SSH research (2014-2017), which describes the development of a system of indicators of scientific impact, political and social research in SSH. Her talk will discuss the findings from this project and their implications for social science research and researchers across Europe.

SUE SCOTT is an Honorary Professor at the University of York (UK) and a Visiting Professor at Helsinki University. She has been a Pro Vice Chancellor with responsibility for research and currently acts as a consultant on Research Assessment and Impact to a number of UK Universities. She is Chair of the Helsinki University Change Review. She is a Vice President of the ESA.

### **Wednesday, 30.08.2017 | 12:45 – 13:45 | PA.1.1**

**MD03:** Meet the Editor: The European Journal of Social Theory at 20 Years

with

**Gerard Delanty**, Sussex University, United Kingdom

*Meet the Editor: The European Journal of Social Theory at 20 Years*

To mark the 20th anniversary of the European Journal of Social Theory, Sage Publications LTD, London, are sponsoring this Mid-Day Special event at which the Editor, Gerard Delanty, will offer his reflections on the journal over the past two decades as well as discussing the field of social theory and challenges for the future. The informal event, at which drinks will be available, will be also an opportunity to discuss with the EJST editor publishing in the journal.

#### SHORT BIOGRAPHY:

GERARD DELANTY. Professor of Sociology and Social & Political Thought, Sussex University, Brighton UK.

I work in the field of historical and political sociology and social theory. I am particularly interested in the intersection of history and sociology. I have recently been working on the European cultural heritage in the context of a Horizon2020 research project <http://culturalbase.eu/>. My current research interests include the Anthropocene debate, cosmopolitanism, and modernity in comparative perspective. My recent publications include *The Cosmopolitan Imagination* (Cambridge University Press, 2009), *Formations of European Modernity* (Palgrave 2013) and *The European Heritage: A Critical Interpretation* (forthcoming Routledge 2018). I have edited the European Journal of Social Theory since it began in 1998. I have started a blog site on Brexit related issues at [www.gerarddelanty.wordpress.com](http://www.gerarddelanty.wordpress.com)

### **Wednesday, 30.08.2017 | 12:45 – 13:45 | PC.2.14**

**MD04:** Academic Freedom Under Threat in Europe

*Session Chair:*

Laura Horn, Roskilde Universitet

with

**Latife Akyuz**, Goethe University Frankfurt am Main, Germany

**Reyda Ergun**, Kadir Has University, Philosophy and Sociology of Law, Faculty of Law

**Csaba Szalo**, Masaryk University

*Academic Freedom Under Threat in Europe*

The commitments to academic freedom and freedom of expression are cornerstones of an open, democratic society. The recent assaults on these principles in Higher Education in countries such as Turkey, Russia and Hungary once again show that academic freedom is seen as threat by increasingly authoritarian regimes.

In Turkey, the government has reacted with repressive measures against academics for expressing their political views in the 'Academics for Peace' campaign. Following the failed coup in July 2016, state disciplining and persecution of academics has increased, with their freedom of expression, opinion, association and travel curtailed in many cases. In Hungary, the autonomy of universities is under threat – most prominently following the government's bill of April 2017, which will render it difficult for the Central European University to continue operating in Hungary.

The struggle for academic freedom, it seems, is more crucial than ever in Europe. How could, and should, the academic community, including learned associations such as ESA, react to these developments? Which possibilities for solidarity, and which avenues for protest are there?

In this panel, speakers will offer presentations on the current state of affairs in Turkey and Hungary. Afterwards there will be an open plenary debate.

#### SHORT BIOGRAPHIES:

Laura Horn is Associate Professor in the Department of Social Sciences and Business at Roskilde University, Denmark. Her research interests are located within a critical political economy of European integration. She is chairing the ESA RN Council in the 2015-2017 term, and has been a member of RN06 Critical Political Economy since 2005.

Reyda Ergün Umuroğlu is Assistant Professor in the Department of Philosophy and Sociology of Law at Kadir Has University, Turkey. Her areas of research are political philosophy, philosophy of law, sociology of law, theory of human rights, and gender studies. She is an academic freedom activist and member of the working group on law under Academics for Peace.

Latife Akyüz received her PhD from Middle East Technical University (METU), Ankara in 2013. She has held positions as a visiting scholar at Indiana University (2010), Binghamton University (2011–12) and the Center for Ethnic and Migration Studies, Liege University (2014). Her research interests are border regions, ethnicity, and gender studies, with her most recent work focusing on migrant Alevi women living in Europe. She was one of the editors of the *Toplum ve Bilim* (Society and Science) Special Issue on Borders and Border Studies in Turkey. She held the position of Assistant Professor at Düzce University from March 2014 until her dismissal in 2016 due to her signing of the Academics for Peace petition. Now she is a Philipp Schwartz fellow in Goethe University, Frankfurt am Main.

Csaba Szalo is currently Chair at the Department of Sociology, Masaryk University, Brno, Czech Republic. He is involved in the Social Theory Research Network and in the Executive Committee of the ESA. In recent years he has been working on urban memory and European identity politics. He has an enduring interest in social theory and cultural sociology.

**Wednesday, 30.08.2017 | 12:45 – 13:45 | PD.2.34**

**MD05: Author Meets Critics: Claus Offe's book "Europe Entrapped"**

*Session Chair:*

Frank Welz, ESA President (Paris/Innsbruck)

*Discussants:*

Teresa Pullano (Basel), Sylvia Walby (Lancaster), Alison E. Woodward (Brussels)

with

**Claus Offe**, Hertie School of Governance, Berlin, Germany

*Europe Entrapped*

In the book "Europe Entrapped", Claus Offe brings into sharp focus the central political problem that lies at the heart of the EU and shackles its ability to deal with the most serious crisis of its short history.

Today Europe finds itself in a crisis that casts a dark shadow over an entire generation. The seriousness of the crisis stems from one core political contradiction at the heart of the European project: namely, that what urgently needs to be done is also extremely unpopular and therefore virtually impossible to do democratically. What must be done - and almost everyone agrees in principle on the measures that would be needed to deal with the financial crisis - cannot be sold to the voting public of the core member states, which so far have been less affected by the crisis than those on the periphery, nor can the conditions that core members try to impose be easily sold to voters in the deficit countries.

The European Union is therefore becoming increasingly disunited, with deepening divides between the German-dominated 'core' and the southern 'periphery', between the winners and the losers of the common currency, between the advocates of greater integration and the anti-Europeans, between the technocrats and the populists. Europe finds itself trapped by the deepening divisions that are opening up across the Continent, obstructing its ability to deal with a crisis that has already caused massive social suffering in the countries of the European periphery and is threatening to derail the very project of the European Union.

**SHORT BIOGRAPHIES:**

**CLAUS OFFE** is Professor of Political Sociology at the Hertie School of Governance in Berlin. He is author of numerous books, including *Contradictions of the Welfare State*, *Disorganized Capitalism*, *Modernity and the State*, and *Reflections on America: Tocqueville, Weber and Adorno in the United States*.

**TERESA PULLANO** is currently Assistant Professor in the Law Faculty and in the Institute of European Global Studies of the University of Basel. She is the author of *'La citoyenneté européenne: un espace quasi-étatique'* (Paris, Presses de Sciences Po, 2014).

**SYLVIA WALBY**, ESA President 1995-97, is Distinguished Professor of Sociology and UNESCO Chair in Gender Research, Director, Violence and Society UNESCO Centre, Lancaster University, UK. Her work contributes to theorising society. It mainstreams gender and other intersecting inequalities and uses complexity science to rethink core concepts of social systems, offering a comparative analysis of neoliberalism and social democracy in Europe and America (Globalization

and Inequalities, Sage 2009). Analysis of the cascading crisis (Crisis, Polity 2015) addresses the changing role of the democratic state in regulating finance and the economy and offers a route towards an alternative future.

ALISON E. WOODWARD (Ph.D. UC Berkeley) is Research Professor Emerita at the Free University of Brussels (VUB) and Senior Associate of the Institute for European Studies at the VUB working on European Union policy on equality, gender, diversity and decision-making. Recently she published (2016) 'EU Civil Society and the crisis: Changing channels and organizational patterns in European transnational civil society' in 'Shifting Paradigms after the Crisis', Palgrave. She has been ESA Vice-President and is presently a Board member of the ESA RN32 Political Sociology.

FRANK WELZ (Innsbruck) is President of the European Sociological Association, currently co-edits 'The Battlefield of European Identity' with G. Tasheva (Routledge 2018) and is glad about the session for continuing the open debate on the conference theme.

### **Wednesday, 30.08.2017 | 12:45 – 13:45 | PB.2.5**

**MD06:** Author Meets Critics: Jo Littler's book "Against Meritocracy: Culture, Power and Mythos of Mobility"

*Session Chair:*

Ruth MCDONALD, University of Manchester

Discussants: Ricca Edmondson (NUI Galway), Marianna Fotaki (Warwick Business School)

with

**Jo Littler**, City, University of London, UK, United Kingdom

*Against Meritocracy: Culture, Power and Mythos of Mobility*

Meritocracy today involves the idea that whatever your social position at birth, society ought to offer enough opportunity and mobility for 'talent' to combine with 'effort' in order to 'rise to the top'. This idea is one of the prevalent social and cultural tropes of our time, as palpable in the speeches of politicians as in popular culture. In this book Jo Littler argues that meritocracy is the key cultural means of legitimation for contemporary neoliberal culture -- and that whilst it promises opportunity, it in fact creates new forms of social division. In this session 2 speakers will engage in discussion about the book with Jo the author.

#### **SHORT BIOGRAPHIES:**

JO LITTLER is a Reader in the Centre for Culture and Creative Industries in the Department of Sociology at City, University of London, UK. She works on cultural politics and her research includes work on meritocracy, consumer culture, heritage and celebrity. She is the author of *Radical Consumption? Shopping for change in contemporary culture* (2008) and is co-editor of *The Politics of Heritage: the legacies of 'race'* (2005, with Roshi Naidoo) and *Cultural Studies and Anti-Consumerism* (2011, with Sam Binkley). She is part of the editorial collective of *Soundings: A Journal of Politics and Culture* and an editor of the *European Journal of Cultural Studies*. Her new book *Against Meritocracy: Culture, Power and Mythos of Mobility* is being published by Routledge in August 2017.

**RICCA EDMONDSON**, NUI Galway, Ireland. Prof Ricca Edmondson taught philosophy at universities in Berlin, also working as a translator, before doing post-doctoral research on the sociology of organisations at the Max Planck Institute for Human Development there. She is a member of the School of Political Science and Sociology at National University of Ireland, Galway, Co-Chair of the Social Sciences Research Centre, and founder of the Galway Wisdom Project. She is a former member of the ESA Executive Committee and an editor of the ESA's journal, *The European Journal of Cultural and Political Sociology*. Since 1999 she has been a member of the Board of Research Network 1 (Ageing). Her research centres on four interconnected, interdisciplinary areas: the sociality of reasoning and rhetorical argumentation; understanding phenomena connected with 'wisdom', and developing new techniques for doing so; issues connected with the life course and life-course meaning; and interculturality, translation and qualitative methods in the social and political sciences.

**MARIANNA FOTAKI** is Professor of Business Ethics at Warwick Business School. She holds degrees in medicine, health economics, and a PhD in public policy from London School of Economics and Political Science. Before joining academia in 2003 she worked as a medical doctor in Greece, China, and the UK, as a volunteer and manager for humanitarian organizations Médecins du Monde and Médecins sans Frontiers in Iraq and Albania, and as the EU senior resident adviser to governments in transition (in Russia, Georgia and Armenia). Marianna is at present a Senior Editor for Organization Studies, and co-directs pro bono an online think tank Centre for Health and the Public Interest a charity that aims to disseminate research informing the public and policy makers (<http://chpi.org.uk>). Marianna is a Network Fellow at the Edmond J Safra Center for Ethics, Harvard University in 2014-2015.

**RUTH MCDONALD** is Professor of Health Science Research and Policy at the University of Manchester. Her research concerns health professionals and change in health sector organisations. She is a member of the ESA executive committee and former Chair of RN19 (Sociology of Professions Research Network).

## **Thursday, 31.08.2017 | 12:45 – 13:45 | PC.2.14**

**MD07: ESA Lecture Series (2) - Sociology Today**

*Session Chair:*

Carmen LECCARDI, University of Milan-Bicocca

with

**Frank Welz**, ESA President, University of Innsbruck, Austria

*Compass lost? Sociology in the Post-Welfare Society*

The purpose of this session is to facilitate active exchange between speakers and the audience about the hopes and realities of sociology today. – Sociology's beginnings were auspiciously ambitious. The formation of a new social order in the 19th century was paralleled by a new mode of thought that promised to provide a tool for navigating this new social world. During the golden age of the welfare state (1950-80), sociology became most attractive to critical students. It expanded at universities far and wide. My guiding question will be: Did sociology's growth parallel its impact as a "compass for society"?

In the effort to shed light on the conditions of sociological knowledge production, I will consider four

approaches. (1) “Kantian theoriesΦ (Habermas, Parsons) fit well with the future-orientation of the welfare state. (2) Backed up by the new neoliberal social order, other theories became dominant in the 1980s, such as “postmodernism” and “systems theory”, both of which posited that traditionally modern perspectives, especially on the politics-society-public policy nexus, required serious reconsideration. (3) Focusing on the triumphant progress of a “new social positivism” as a third group of sociological views, my thesis will be that current conditions of knowledge production push sociology toward descriptive analyses which tend to reflect trends rather than analyse social transformation:

(a) the “eclipse of ‘society’” in sociology has replaced categories such as collective institutions by nominalist labels like individualization, chance, choice, agency, and risk; (b) the “triumph of the fragmented ‘individual’” in cultural analysis further fractured group categories; (c) the “triumph of ready-made methods”, imposed via project- and funding-driven work; (d) finally, the increasing importance of “governing by numbers” further encouraging the “triumph” of the sociologist as an “academic ‘self-entrepreneur’” (Foucault).

(4) Is there an alternative? What is to be done? Against the fragmentation of sociology into small vignettes, how can we strengthen the education of scholars as members of a collaborative association of peers and experts on societal transformation?

**Margaret Abraham**, ISA President (Hofstra University), USA

*Sociology’s Challenge - Unravelling a Post-Truth World*

Growing inequality and resultant widespread frustration and anger have engendered deeply polarized societies that have heightened racism, xenophobia, ethnocentrism, religious fundamentalism and the politics of exclusion. Instead of targeting the real perpetrators of an unequal system, the resentment and frustration have metamorphosed into a frontal attack on multiculturalism, secularism, LGBTQA rights and a surge in a narrow inward looking nationalism. A frightening aspect of this surreal world is that the purveyors of fabricated claims and deliberate deceit are often able to convince their legion of supporters of their point of view, however extreme and false, often through effective use of the media and more particularly, social media. We live in a post-truth world. This presentation will consider how can sociologists respond to this dystopia? How does sociology face this profound challenge?

#### SHORT BIOGRAPHY

Professor Frank Welz (Innsbruck University) currently is serving as President of the European Sociological Association. He conceives of sociology as a public good. He has been the coordinator of ESA RN29 Social Theory and is publishing on social theory, sociology of law, and the history of sociology; currently is co-editing “The Battlefield of European Identity”, with G. Tasheva (Routledge).

Margaret Abraham is Professor of Sociology at Hofstra University and the President of the International Sociological Association, (ISA 2014-2018). Her teaching and research interests include gender, globalization, social justice, immigration, and domestic violence. She has published in various journals and is the author of the award winning book “Speaking the Unspeakable: Marital Violence Among South Asian Immigrants in the United States” (Rutgers University Press 2000). Her co-edited book and volumes include, *Contours of Citizenship: Women, Diversity and the Practices of Citizenship* (Ashgate 2010); *Making a Difference: Linking Research and Action* (Current Sociology,

Monograph Series, 2012), *Interrogating Gender, Violence, and the State in National and Transnational Contexts* (Current Sociology, 2016).

Carmen Leccardi is professor of Cultural Sociology at the University of Milan – Bicocca. She has been President of the European Sociological Association 2015-17.

### **Thursday, 31.08.2017 | 12:45 – 13:45 | PB.2.5**

**MD08:** Interdisciplinarity in Times of Budget Cuts and University Restructuring - Advancement or Demise of Sociology?

*Session Chair:*

Jolanta PEREK-BIALAS, Jagiellonian University

with

**Kathrin Komp**, Helsinki University, Finland

*Creating Interdisciplinarity Through Budget Cuts: When Sociology Goes Economics*

Recent budget cuts in academia pressure sociologists to tap new funding sources. Using neoliberal arguments, university administrations and policymakers suggest raising funding through commissioned research and product development. But how can such an adoption of economic perspectives in sociology can be achieved? And what are its advantages and disadvantages? This study answers these questions through expert interviews and participant observation. Findings identify university administrations, consultants and economists as the proponents of research commercialization, who focus on funding acquisitions and product improvement. The adversaries are sociologists, who find a commercialization antithetic to their research, have ethical concerns about aggravating social problems, and fear for their academic careers. Consequently, the discipline of sociology could erode.

**Sue Scott**, University of York, United Kingdom

*Interdisciplinarity: Disciplinary and Institutional Challenges*

Many recent university restructurings have created multidisciplinary departments/schools and multidisciplinary degree programmes. These structures are often intended to reduce administrative demands and also facilitate an interdisciplinary dialogue. The assumption is that new research ideas and collaborations will emerge if different disciplines are co-located or otherwise merged. This presentation discusses waves of change in UK Universities of the past 20 years or so and explores the intended and unintended consequences for sociology. The presentation will stress the need to differentiate between organisational structures of convenience and the intellectual questions and social issues which would benefit from a multi disciplinary or interdisciplinary response. The question 'what would we lose if there wasn't a discipline of sociology' will be posed.

#### SHORT BIOGRAPHIES:

KATHRIN KOMP is an assistant professor in sociology at Helsinki University, Finland. She specializes in research on population ageing, welfare policies, effects of the 2008 economic crisis, and research methods. Moreover, she currently holds a Marie Curie grant for a study on the long-term effects of unemployment spells on retirement. Recently, she conducted a study on the commercialization of sociological research. Komp was on the board of the ESA Research Network

“Ageing in Europe” for eight years and now serves on the ESA executive committee.

SUE SCOTT has researched and published widely in the areas of gender; sexuality, risk; the body and childhood. She has held academic posts at a number of UK Universities including Professorships at Stirling and Durham. She was also Executive Dean of Humanities and Social Sciences at Keele University and Pro Vice Chancellor (Research) at Glasgow Caledonian University. She currently holds an Honorary Professorship at the University of York and is a Visiting Professor at the University of Helsinki and undertakes research consultancy and mentoring. She is a Vice President of the European Sociological Association and a Managing Editor of, the online social science magazine Discover Society [discover.society.org](http://discover.society.org).

JOLANTA PEREK-BIALAS is an assistant professor who works at the Institute of Sociology at the Jagiellonian University, Cracow, Poland, and the Warsaw School of Economics. She has been involved in international projects under the 5th, 6th and 7th FP of the EU and as well in those finances by the Norwegian Research Council of Science, the VW Foundation, the OECD/LEED Programme related to gerontology, sociology of ageing, population ageing and its impact on economy, active ageing, social inequalities, public policy analysis. Her publications in peer-reviewed journals and chapters in international books considered socio economic consequences of population ageing in Poland and in selected Central and Eastern European countries, active ageing policy, employers' strategies towards older workers, reconciliation of work and care, social exclusion/inclusion of older people. She is a Vice-Chair of the RN 21 Quantitative Methods of ESA.

### **Thursday, 31.08.2017 | 12:45 – 13:45 | PF.1.43**

**MD09:** Meet the Editors: How to Write A Journal Article and Get It Published

*Session Chair:*

Lena Margareta Näre, University of Helsinki

with

**Ricca Edmondson**, National University of Ireland Galway, Ireland

**Michalis Lianos**, University of Normandy - Rouen FR, France

**Eeva Luhtakallio**, University of Tampere, Faculty of Social Sciences FI, Finland

**Marta Soler Gallart**, University of Barcelona, Department of Sociology ES, Spain

*Meet the Editors: How to Write A Journal Article and Get It Published*

While dissemination of research findings and critique is at the core of scientific practice, publication processes can be long and frustrating from the author's and journal editors' perspective. Authors want speedy publication, yet the quality of research depends on rigorous peer-review. The increasing pressure to 'publish or perish' forces authors to submit un-polished articles while journal editors are anxious for well-written, polished articles that fit the scope of their journal and contribute to its ongoing debates.

This session is designed to encourage ESA members to write journal articles, to share ideas on how to write a good article and how to get it published. The members of the panel can offer participants a range of long and varied experience in editing journals and in working with authors to help make their work clearer and more accessible.

We invite ESA members to attend the session in order to hear more about what journal editors are



looking for in articles submitted to them and their advice on what the author can do to speed up the publication process. We invite ESA members also to share their thoughts and possible problems they may have experienced in getting published. We will offer constructive ideas how to improve journal publishing from the standpoints of authors, editors and readers. We invite ESA members to send their questions in advance to the chair of the session, though questions from the floor will also be welcome.

**SHORT BIOGRAPHIES:**

**RICCA EDMONDSON** taught philosophy at universities in Berlin, also working as a translator, before doing post-doctoral research on the sociology of organisations at the Max Planck Institute for Human Development. She has since worked at the School of Political Science and Sociology at the National University of Ireland, Galway and is founder of the Galway Wisdom Project. She is a former member of the ESA Executive Committee and an editor of the ESA's journal, *The European Journal of Cultural and Political Sociology*. Her research centres on the sociality of reasoning and rhetorical argumentation; understanding phenomena connected with 'wisdom'; issues connected with the life course and life-course meaning; and interculturality, translation and qualitative methods in the social and political sciences. She has been a member of Research Network 01 (Ageing) since 1999.

**MARTA SOLER-GALLART**, Harvard PhD, is Professor of Sociology and Director of CREA Research Centre at the University of Barcelona. She is Editor in Chief of "International Sociology", member of the ESA Executive Board and member of the EASSH Governing Board. She served at the ORCID Board of Directors. Recently she published in "Qualitative Inquiry", "Journal of Pragmatics" and "Nature".

**MICHALIS LIANOS** is Professor at the University of Rouen-Normandie and Editor-in-Chief of the European Sociological Association journal "European Societies" ([www.tandfonline.com/toc/reus20/current](http://www.tandfonline.com/toc/reus20/current)). He was previously Lecturer at the University of London (Goldsmiths College) and Director of the "Centre for Empirically Informed Social Theory" (CEIST) at the University of Portsmouth.

**Eeva Luhtakallio** is Associate Professor of Sociology (tenure track) at the University of Tampere, Finland. She is specialized in political sociology, visual and gender studies, ethnography, and social theory. Her recent research has focused on marginalization and political participation, as well as the questions of justifying and engaging in a polarizing civil society. Her recent publications include 'Ethnography of Politics and Political Communication: Studies in Sociology and Political Science' (with Nina Eliasoph, in *The Oxford Handbook of Political Communication*, edited by Kate Kenski & Kathleen Hall Jamieson, 2017) and 'Justification Analysis' (with Tuomas Ylä-Anttila, in *Sociological Research Online*, 2016). She is the author of *Practicing Democracy: Local Activism and Politics in France and Finland* (Palgrave Macmillan, 2012). She edits (with Ricca Edmondson) an ESA journal, *The European Journal of Cultural and Political Sociology*.

**LENA NÄRE** is Associate Professor of Sociology (tenure track) at the University of Helsinki, Finland. Her research focuses on migration, gender, work (especially care work) and ageing. Her recent publications include a co-edited volume entitled *Transnational Migration and Home in Older Age* (Routledge 2016). She is the Editor-in-Chief (with S. Bendixsen) of *Nordic Journal of Migration Research* and member of the ESA Executive Committee (2015-2017).

**Thursday, 31.08.2017 | 12:45 – 13:45 | PC.1.7**

**MD10:** Meet the Funders: Sociology at its best - Everything you want to know about the ERC Grants

*Session Chair:*

Dagmar Danko, European Sociological Association

with

**Lionel Léopold Thelen**, European Research Council (ERC), Belgium

*Sociology at its best - Everything you want to know about the ERC Grants*

The ERC funding capacity increases each year and the budget devoted to social sciences has been bettered from 2015 onwards. With funding up to 2,5 million € for a 5 year project, the ERC has become – in less than 8 years – one of the major funding bodies worldwide and certainly the most generous for Social Sciences and Humanities.

“What do the ERC schemes have to offer to sociologists?” “How to get started with an application?” “How to increase your chances to get funding?” “What are the main hitches to avoid?” These are all relevant questions that will be raised during this workshop. Do not hesitate to bring yours!

This session is opened to all sociologists aiming to design and lead ground-breaking research projects to their good end. The presentations will be done by ERC Scientific Staff as well as by ERC Grantees. The presentation will be followed by a Q&A session. Of course, presenters will be available during the whole duration of the Conference to answer your queries. Flyers, reports and publications will be available to help you inasmuch as possible, not forgetting, last but not least, our website: <http://erc.europa.eu/>

**SHORT BIOGRAPHIES:**

After having graduated from Liege University (B) in Social Anthropology, Lionel Thelen has worked as research assistant in the same university for one year before being accepted as PhD Researcher in the European University Institute of Florence. He did his PhD in Sociology, studying the processes by which some individuals may anchor themselves into long-term Homelessness, processes he subsumed under the designation of “Self Exile”. During his PhD thesis he made some visiting fellowships in University Paris V (F), in the University Saint-Louis (Brussels) as well in ISCTE (Lisbon - P). After the PhD Thesis Defence, in 2003 he had the opportunity to be hired by the University of Geneva as Assistant Professor in the Dept. of Sociology.

Since April 2009, he works for the European Research Council as Research Programme Officer, and has coordinated, in this function, various panels of evaluation, mostly in the SSH Domain. For 3 years now he has been in charge of the SH3 panel “The Social World, Diversity, Population” dealing with disciplines such as Sociology, Social Psychology, Demography, Education, Communication and, from next year onwards, Social Anthropology.

DAGMAR DANKO has acquired her PhD in Sociology at the University of Freiburg (Germany) in 2010. She has published a number of books, e.g. an introduction to the sociology of the arts (2012) and an introduction to the work of Howard S. Becker (2015). Since October 2016, she is Executive Coordinator of the ESA (Paris).

**Thursday, 31.08.2017 | 12:45 – 13:45 | PD.2.33**

**MD11: Meet Civil Society Actors: Migration in Greece**

*Session Chair:*

Apostolos G. Papadopoulos, Harokopio University

with

**Apostolos Veizis**, *Médecins Sans Frontières (MSF)*, Greece

**Nikolaos Gkionakis**, Babel Day Centre, Greece

**Eleni Takou**, SolidarityNow, Greece

**Fotini Ratsiou**, Volunteer, Greece

This event aims at facilitating the interaction between civil society actors and practitioners with the academia and researchers on the issues attached to migration towards Europe. Four experts engaged with migrants/ refugees are invited to present their views on how EU guidelines and policies on migration and asylum have been implemented by state agencies and the NGOs. They are also urged to testify their own experiences connected to their involvement with the migrants/ refugees during the recent period of 'Migration/ Refugee Crisis' and its aftermath. They are invited to offer complementary standpoints in view of their specific involvement with migrants/ refugees at different spatial scales (European, national, regional, local).

The interaction between civil society actors and practitioners, on the one hand, and academics and researchers, on the other, is expected to enrich the wider dialogue among them and empower those who have as their mission to respond to migration challenges. More generally, migration constitutes a domain where numerous socioeconomic, political and cultural issues are merged together, leading to social clashes or discontent. Very often civil society actors have intermediated migrant/ refugee participation, while state actions are limited and problematic. Finally, the presenters have been asked to reflect on the implementation of migration/ asylum policy measures and make policy recommendations.

#### SHORT BIOGRAPHIES:

**APOSTOLOS VEIZIS** is a Medical Doctor (General Practitioner). He is the Director of Medical Operational Support Unit (SOMA) of *Médecins Sans Frontières (MSF)* -Greek Section. Prior to that he worked as Head of Mission and Medical Coordinator for *Médecins Sans Frontières (MSF)* and *Médecins du Monde* in Afghanistan, Azerbaijan, Russia, Albania, Egypt, Georgia, Greece, Turkey. Participated on assessment, emergency assignments and evaluations in Kyrgyzstan, Morocco, Armenia, Lebanon, Syria, Ukraine, Turkmenistan, Zambia, Malawi, Uzbekistan, Serbia, FYROM, Cyprus and Tajikistan. He participated and had announcements in international and national medical congresses and contributed on publications of relevant articles.

**NIKOLAOS GKIONAKIS** graduated from the University of Padua (Italy) in Applied Psychology and then obtained his MSc degree specializing in Social Psychiatry-Child Psychiatry at the University of Ioannina (Greece). In 2007 he founded, together with other professionals, Babel Day Centre, a mental health unit for migrants in Athens (Greece). He is the scientific associate of the unit and he has developed clinical activity (especially with survivors of extreme violence and other extreme adversities), training activity (thus cooperating with international and national organisations), and supervision activity with professionals and volunteers assisting migrants and refugees.

**ELENI TAKOU** has studied communication, political science and political philosophy in Athens and Paris. She works as Senior Advocacy Officer at SolidarityNow (<http://www.solidaritynow.org>). During 2015, she has served as Chief of Staff of the Alternate Minister for Migration Policy. Prior to

this, she has served as assistant coordinator of the Racist Violence Recording Network, a coalition of 35 CSOs, under the auspices of UNHCR Office in Greece and the Greek National Commission for Human Rights, and as Project and Communication Manager of the Hellenic League for Human Rights, the oldest NGO in Greece, where she focused her work on issues of migration, citizenship and anti-racism advocacy. She is co-writer of *Immigration in Greece. Eleven myths and more facts*, published by the Rosa Luxemburg Foundation (<http://rosalux.gr/publication/i-metanasteysi-stin-elleda>).

FOTINI RANTSIOU is a humanitarian worker in the international field since 1997, with the UN and EU. On a break from international work she moved independently to Lesbos where since August 2015 she has volunteered at the first response and in Moria/Kara Tepe. In 2015-2016 she was field adviser for Solidarity Now in Lesbos, later led a UNICEF assessment in the camps in the north of Greece and in 2017 she conducted an assessment of the urban refugee population in Athens and Thessaloniki for the Danish Refugee Council. She writes and tweets on the refugee situation in Greece, provides inputs to university researchers, think tanks, NGOs and media.

APOSTOLOS G. PAPAPOULOS is Professor of Rural Sociology and Geography at the Department of Geography, Harokopio University (Athens, Greece). He has served as Director of Postgraduate Studies in his Department (2009-2011) and as an elected Vice-Rector of Economic Affairs and Development (2011-2015) at his University. His research is focused on the factors and mechanisms related to rural transformation, social change, social class and social mobility. He is also interested on the impact of migration on host societies, while recently he became interested on the asymmetries between social transformation and migration processes at various spatial scales. He has (co)edited/ written seven books, while he has over 100 publications, including refereed papers and book chapters. He is particularly interested in applied social research and recently he was appointed as member of the CIHEAM Advisory Board (2017-2020), focusing especially on research, education and rural development in the Mediterranean countries. He is Chair of the Hellenic Sociological Society (HSS) and Chair of the LOC for the 13th ESA Congress in Athens.

### **Thursday, 31.08.2017 | 12:45 – 13:45 in PA.1.1**

**MD12: Author Meets Critics: Victor Roudometof's book "Glocalization: A Critical Introduction"**

*Session Chair:*

Sokratis M. Koniordos, University of Crete

Discussants: Gili S. Drori, Giampietro Gobo

with

**Victor Roudometof**, University of Cyprus, Cyprus

*Author Meets Critics: Victor Roudometof's book "Glocalization: A Critical Introduction"*

The session will be concerned with the new and relatively under-theorized concept of glocalization. It has at its starting point Victor Roudometof's (London and New York: Routledge, 2016, 185 pp.) volume, which chronicles the term's origins and provides overviews of past and current research from anthropology, sociology, political science, cultural studies, and business studies. Unlike past theories, a central argument is that glocalization should be seen as analytically autonomous from globalization and proposes definitions of glocal as process (glocalization), condition (glocality) and worldview (glocalism). While glocalization and glocality should be recognized as important facets of 21st century social life, social scientists should reject both affirmative and/or negative glocalism. The limits of glocalization should be recognized and uncritical celebrations of glocality should be avoided.

## SHORT BIOGRAPHIES:

VICTOR ROUDOMETOF is Associate Professor of Sociology at the Dept. of Social And Political Studies, University of Cyprus. He has studied history, economics, cultural studies, and sociology. He has held appointments at Princeton University, Washington and Lee University, Miami University and the American College of Thessaloniki. His publication record includes 100+ articles, book chapters, and other contributions. He has served as referee and/or reviewer for major international publishers & scholarly journals. He has also served as external evaluator for stage agencies and research foundations in the Netherlands, Greece, Georgia, the USA & the Gulf states and in hiring, promotion and tenure review committees. He is Faculty Fellow with the Center for Cultural Sociology at Yale University & a member in the editorial boards of the *European Journal of Social Theory*, *Nations and Nationalism*, the *Greek Review for Social Research*, and *Religions*.

GILI S. DRORI studied Sociology, Anthropology and Political Science at Stanford University and Tel Aviv University. Currently she is Professor at the Dept. of Sociology and Anthropology, at the Hebrew University of Jerusalem. She has held appointments at Stanford University, University of Bergamo, Uppsala University, Technion, and the University of California at Berkeley. Among her more recent publications are: Gili S. Drori, Markus A. Höllerer, and Peter Walgenbach (2014), *Global Themes and Local Variations in Organization and Management: Perspectives on Glocalization*, Routledge; Krücken, Georg and Gili S. Drori (eds) (2009), *World Society: The Writings of John W. Meyer*, Oxford University Press; Drori, Gili S., Janne Tienari, and Arild Wæraas (eds.) (2015), "Building and Managing Higher Education Brands", special issue of *International Studies of Management & Organization*. Drori has been on the editorial board of *European Journal of Cultural and Political Sociology*, and the editor of *BaSha'ar – Academic Community for Israeli Society*.

GIAMPIETRO GOBO studied Sociology and Management off Technology at the Universities of Milan and Trento. Currently he is Professor of Methodology of Social Research at the Dept. of Social and Political Sciences, University of Milan. He has held past appointments at the University of Sienna and the University of California San Diego. Fields of interest and areas of specialization include: quantitative and qualitative methods, marketing research, epistemology, organization and management studies, computer supported cooperative work, and ergonomics. Gobo has published over fifty articles in the areas of qualitative and quantitative methods. His books include *Doing Ethnography* (Sage 2008) and *Qualitative Research Practice* (Sage 2004, co-edited with C. Seale, J.F. Gubrium and D. Silverman). He is currently engaged in projects in the area of workplace studies. He is associate editor of *International Journal of Qualitative Research in Work & Organizations*, and editorial board member in the *Qualitative Research*, *Qualitative Sociological Review* and *Forum: Qualitative Sozialforschung/Forum: Qualitative Social Research*.

SOKRATIS KONIORDOS (BA, Deree & Panteion; MA Kent; PHD London/LSE) is Professor of Sociology at the Dept. of Sociology, University of Crete. He has held appointments at Middlesex University, University of Quest-Nanterre (Paris 8), University of Cyprus, University of Milan-Bicocca, Open University, University of Thessaloniki, HOU, and the University of the Aegean. Main research areas include economic sociology, sociology of work, social structure, modernity, and social effects of the current crisis. He has published 17 volumes, and several research articles. Among his publications are, *The Handbook of European Sociology*, New York and London, Routledge, 2014 (with A. A. Kyrtis); *Conflict, Citizenship and Civil Society*, London: Routledge, 2010 (with P. Baert, G. Procacci and C. Ruzza); *Towards a Sociology of Artisans: Continuities and Discontinuities in Comparative Perspective*, Aldershot: Ashgate, 2001. After chairing the editorial board of *European Societies*, he is

now the editor of the Greek Sociological Review and board member of the Greek Review for Social Research.

**Thursday, 31.08.2017 | 12:45 – 13:45 | PE.1.38**

**MD13: Author Meets Critics: Clyde W. Barrow's book "Towards a Critical Theory of the State"**

*Session Chair:*

Monica Clua-Losada, University of Texas Rio Grande Valley

Discussants: Claus Offe, Laura Horn, Ian Bruff

with

**Clyde Barrow**, University of Texas Rio Grande Valley, United States of America

*Author Meets Critics: Clyde W. Barrow's book "Towards a Critical Theory of the State"*

This mid-day special will be based around the discussion of the recently published book "Toward a Critical Theory of States" by Professor Clyde Barrow. The book is an intensive analysis of the 1970s debate between state theorists Ralph Miliband and Nicos Poulantzas, including its wider impact on Marxist theories of the state in subsequent decades. Clyde W. Barrow makes unique arguments and contributions to this continuing discussion in state theory and lays the foundation for more theoretically informed empirical and historical research on the state in the age of globalization. He argues that by merely moving past the Poulantzas-Miliband debate, as some have recommended, scholars have abandoned much that is valuable in understanding the state, particularly the need to comprehend the contemporary transformation of the state form and the state apparatuses as part of the new conditions of globalization and transnational capital accumulation. Building upon themes of state restructuring found in Poulantzas and Miliband, Barrow establishes the outlines of an approach that integrates the thought of both to propose a synthetic understanding of the new imperialism.

#### SHORT BIOGRAPHIES:

CLYDE W. BARROW is Professor and Chair of Political Science at the University of Texas, Rio Grande Valley. His books include *Critical Theories of the State: Marxist, Neo-Marxist, Post-Marxist and Class, Power and the State in Capitalist Society: Essays on Ralph Miliband* (coedited with Paul Wetherly and Peter Burnham).

CLAUS OFFE is Professor Emeritus of Political Sociology at the Hertie School of Governance. He has held chairs for Political Science and Political Sociology at the Universities of Bielefeld (1975-1989) and Bremen (1989-1995), as well as at the Humboldt-Universität in Berlin (1995-2005). He worked as fellow and visiting professor at, among others, the Institutes for Advanced Study at Stanford and Princeton, the Australian National University, Harvard University, the University of California, Berkeley and The New School in New York. He completed his PhD at the University of Frankfurt and his habilitation at the University of Konstanz.

LAURA HORN's research area is Global Political Economy, with particular attention to the regional manifestation of these structures and processes in the context of European integration. She is interested in the changing nature of capitalist restructuring and how these developments affect social power relations. Empirically, her work analyses the regulation of corporate governance and corporate accountability in the EU and beyond; the nature of the emerging European state formation; the question of which role organized labour can play in the (re)formulation of economic and social policies

at the EU level, as well as a broader examination of left strategies and alternatives in the context of the challenges posed by the financial, economic, social and environmental crisis. Dr. Horn's work is situated within a historical materialist tradition, and engages with the writings of Marx, Gramsci and Poulantzas, amongst others.

IAN BRUFF is Lecturer in European Politics at the University of Manchester UK. He has published widely on European political economy(ies), debates on comparing capitalisms, neoliberalism, and social theory, and is currently researching the political economy of neoliberalism in Europe. He is the Managing Editor for the new, cross-disciplinary Transforming Capitalism book series published by Rowman & Littlefield International, and he is on the Editorial Board for the journal Art & the Public Sphere. Also, he was the Chair of the Critical Political Economy Research Network of the European Sociological Association from 2009-13, and he now serves on CPERN's International Advisory Board.

MONICA CLUA-LOSADA is Associate Professor in Global Political Economy at the Department of Political Science at the University of Texas Rio Grande Valley. She is chair of the Critical Political Economy Research Network. She is also an executive board member of the Johns Hopkins University- Universitat Pompeu Fabra Public Policy Center in Barcelona. Her research focuses on the contestation, subversion and resistance of labour and other social movements to capitalist relations of domination. She has written and researched on the effects of the current financial crisis on the Spanish state, the British labour movement and social movements in Spain. Her recent work has been published in Comparative European Politics, New Political Economy and the Global Labour Journal. She has a forthcoming manuscript with Routledge, co-authored with David Bailey, Nikolai Huke and Olatz Ribera-Almandoz entitled Beyond Defeat and Austerity: Disrupting (the Critical Political Economy) of Neoliberal Europe.

## Research Networks and Research Stream Sessions

The entire conference agenda with all sessions can be found in  
ConfTool. Here is the direct, open access link:  
<https://www.conftool.pro/esa2017/sessions.php>



## PhD Summer School 2017

Sunday, 27.08 and Monday, 28.08 2017

### Selected PhD students:

Byeongsun Ahn, University of Vienna, Austria  
Amalia Alvarez Benjumea, Max Planck Institute Research on Collective Goods, Germany  
Pinar Aslan, University of Gävle, Sweden  
Inna Bell, Graduate School for Social Research, Polish Academy of Sciences  
Sílvia de Almeida Cardoso, University of Lisbon/ IGOT, Portugal  
David Cichon, Trinity College Dublin, Ireland  
Anna Dolinska, University of Warsaw, Poland  
Cihan Erdal, Mimar Sinan Fine Arts University, Turkey  
Tal Feder, University of Haifa, Israel  
Zhen Jie Im, University of Helsinki, Finland  
Virpi Kaisto, University of Eastern Finland, Finland  
Galatia Kallitsi, University of Cyprus, Cyprus  
Hadrien Malier, EHESS, France  
Sara Merlini, Institute of Social Sciences of the University of Lisbon, Portugal  
Madelaine Moore, Kassel University, Germany  
Maria Neufeld, Dresden University of Technology, Germany  
Clara Piolatto, Paris Ovest Nanterre La Défense University, France  
Olga Plakhotnik, The Open University, United Kingdom  
Konstantinos Roussos, Department of Government, University of Essex, United Kingdom  
Tomáš Samec, Charles University, Czech Republic  
Konstantinos Theodoridis, Manchester Metropolitan University, United Kingdom  
Anne Elisabeth Atlee van der Graaf, Sciences Po, France

### Teachers:

Airi-Alina Allaste (Estonia, Coordinator)  
Monica Massari (Italy), Ruth McDonald (UK), Lena Näre (Finland), Eleni Nina-Pazarzi (Greece),  
Helena Serra (Portugal) as well as Katrin Tidenberg (Denmark/Estonia)

## ESA Candidates 2017 - 2019

### Candidates for President



**1. Sue Scott**, University of York, Centre for Women's Studies, United Kingdom

**Short Biography:** Professor Sue Scott has been a member of the ESA since 1993 and Chair of the National Associations and Vice President 2015-2017. She is Fellow of the UK Academy of Social Sciences and a member of its Council. She was President of the British Sociological Association 2007-2009 and its Director of External Affairs 2013-2016. She has held Professorships at four UK Universities, and from 2009-2012 was Pro Vice Chancellor for research at GCU. She is an Honorary Professor at York and a Visiting Professor at Helsinki. Sue has extensive international experience of the funding, and evaluation of Research in Sociology.



**2. Frank Welz**, University of Innsbruck, Austria

**Short Biography:** Prof. Frank Welz has worked for ESA Committees in many functions and serves as ESA President in his first term. He conceives of sociology as a public good. In order to foster a more active ESA, he is currently restructuring ESA's conference and headquarters operations. After studying sociology, history, philosophy, and psychology, he taught and conducted research at the Universities of Basel, Bielefeld, Bolzano, Cambridge, Freiburg, N. Delhi, Onati, and Innsbruck where he currently is supervising 11 PhD students. He has been publishing in the areas of social theory, sociology of law, and the history of sociology ('The Battlefield of European Identity', co-ed. Gallina Tasheva, Routledge; 'The European Sociology We Want', CSR 2016). His enthusiasm for ESA was sparked by his peer experience coordinating ESA's 'RN29 Social Theory'. Since then, he has co-organised ESA, ISA, OGS and DGS congresses, and currently actively is supporting ESA goals as a board member of the new 'European Alliance for the Social Sciences and Humanities' (EASSH).

## List of Candidates for the Executive Committee



### 1. Airi-Alina Allaste, Tallinn University, Estonia

**Short Biography:** Airi-Alina Allaste is Professor of Sociology at Tallinn University and president of the Estonian Sociological Association. As a member of the current ESA executive committee, she is the director of Pre-conference PhD Workshop in Athens from 27 to 28 August.

Her research, publications and teaching focus on youth studies. She has been a national coordinator and working package leader for various international projects and been recently visiting professor at Lisbon University, Portugal; Griffith University, Australia and Åbo Akademi, Finland. She has been responsible organiser of several conferences including *10th Annual Conference of Estonian Social Sciences* (Tallinn, Estonia March, 2017).



### 2. Milica Antić Gaber, University of Ljubljana, Slovenia

**Short Biography:** Milica Antić Gaber is Full Professor at the Faculty of Arts (Sociology Department) University of Ljubljana (Slovenia) where she teaches several courses, among others Introduction to Sociology and Sociology of gender and coordinates doctoral program Gender Studies. She was a Head of Slovene Sociological Association for two mandates (2010 - 2016) and chairs a Section Gender and Society. She is also one of the board members of ESA RN 33 Women's and Gender studies. She has been involved in different expert groups on women in politics in Slovenia and in international context. Her research interest is oriented to gender (in)equality in different fields of life (politics, migration, violence against women, imprisoned women) in which she either coordinated or participated in several national and international research projects.



### 3. Nilay Çabuk Kaya, University of Ankara, Turkey

**Short Biography:** Nilay Çabuk Kaya is a Professor of Sociology at the University of Ankara, Turkey. She is currently to serve as vice-president of Turkish Sociological Association (TSA). She is in the ESA's executive member 2015-17. She is also in the board of ESARN33-"Women's and Gender Studies" and Regional Representatives of the Middle East and West Asia in the ISA

RC 32 'Women in Society'. She holds a BA and MA from Ege University, İzmir/Turkey and a PhD (1994) from the Durham University at UK. Her

research focuses on gender inequalities, gendered processes of work, women employment at factory, women empowerment, women domestic violence and femicide. She has worked as a consultant on various projects funded by national (TUBİTAK,) and international (WorldBank, UNDP, EU, IFC, EBRD) bodies, and published in national and international journals.



**4. Marco Caselli**, Università Cattolica del Sacro Cuore, Italy

**Short Biography:** Born May 19th, 1973. Degree in Political Sciences at Genoa University. Ph.D in Sociology and Methodology of Social Research at Catholic University of the Sacred Heart, Milan. Marco Caselli is professor of Sociology at the Faculty of Political and Social Sciences - Catholic University of the Sacred Heart - Milan. He is Vice-Coordinator of ESA RN 15 "Global, Transnational and Cosmopolitan Sociology" and member of the Scientific Board in the Methodology Section of AIS - Italian Sociological Association. Among his publications "Trying to Measure Globalization. Experiences, Critical Issues and Perspectives" (Springer, 2012) and "Globalization, Supranational Dynamics and Local Experiences" (edited with Guia Gilardoni, Palgrave Macmillan, in press).



**5. Pedro Caetano**, Investigador CICS.NOVA, Lisbon, Portugal

**Short biography:** Pedro Caetano, sociologist, researcher at the Interdisciplinary Center of Social Sciences of the New University of Lisbon (CICS.NOVA), and secondary school teacher. Graduated in Geography by the University of Coimbra and in Sociology from the Universidade Nova de Lisboa (UNL). I have a doctorate in Sociology, domain of Sociology of Culture, Knowledge and Education, by UNL (2014), with the thesis titled "Individuation and Recognition: Processes of Political Socialization in the Uncertainty of School Itineraries". I have participated in several national scientific projects related to gender, inequality and humiliation in schools, the school choices of young people, and the Educational Territories of Priority Intervention; I had integrated, in 2011, a program of exchange of Portuguese and Brazilian researchers, on controversies, public causes and political participation in a comparative perspective. I had participated in several international congresses with communications and published in several national and international journals on thematic related to school and education, from the youngers perspectives and how they manage the proximity, responsibility and diversity in schools. My current research interests are centered in Qualitative research, questions of justice and discrimination in schools, or the modes of governance of schools. In 2017, I organized a thematic seminar entitled "The School and the metamorphoses of educational justice".



**6. Mikael Carleheden**, University of Copenhagen, Denmark

**Short Biography:** Mikael Carleheden is currently associate professor in sociology and coordinator of the *Centre for Anthropological, Political and Sociological Theory*, University of Copenhagen, editor of *Distinktion: Journal of Social Theory* (Routledge), consulting editor of *Acta Sociologica* (Sage) and a board member of ESA RN29. Mikael has further been president of the Swedish sociological association, Head of studies (Örebro), Head of department (Örebro), Head of the PhD programme (Copenhagen), visiting scholar (philosophy, Goethe-University Frankfurt and sociology, University of Chicago), post-doc (political science, Columbia NYC) and employed at different sociology departments (Lund, Aalborg, Örebro, Copenhagen). He is doing research in social and political theory, theory of science and methodology.



**7. M. Teresa Consoli**, University of Catania, Italy

**Short Biography:** M. Teresa Consoli (1967), Ph.D. in Sociology and M.S. in Social Policy and Planning at the London School of Economics, Associate Professor in Sociology of Law at the Dept. of Social and Political Sciences at the University of Catania (Italy). She teaches Sociology of Law and Social Policy and her research interests are focused on normative and comparative aspects of welfare systems. Among her latest publications she contributed as expert to the European comparative study on Homelessness Asylum Seekers, Refugees and Homelessness (2016) and edited the book *Migration towards Southern Europe* (2015). At present, she is head of a Master in Planning of Social Policies at the University of Catania and Director of the University Research Center, Laposs ([www.lpss.unict.it](http://www.lpss.unict.it)).



**8. Elena Danilova**, Institute of Sociology Russian Academy of Sciences, Russia

**Short Biography:** Elena Danilova is a Head of the Centre in the Institute of Sociology, Russian Academy of Sciences (Moscow). Her recent interests and publications intersect sociology of transformations, in particular that are taking place in post-socialist societies, and critical sociology (the latest publications: *Actual and perceptual social inequality under transformative change in Russia and China. Europe-Asia Studies*, 2017; *Neoliberal Hegemony and Narratives of "Losers" and "Winners" in Post-Socialist Transformations. Journal of Narrative Theory*, 2014). She also teaches sociology at HSE. Member of editorial boards of several professional journals. Member of Russian society of sociologists. She served as member of Executive Committee of ESA (2009-2013), vice president (2011-2013). Again was elected for the term 2015-2017. In ESA she contributed and initiated the RN36 "Sociology of transformations: East and West", currently she is its coordinator.



**9. Agoston Faber**, ELTE Budapest, Hungary/EHESS Paris, France

**Short Biography:** Agoston Faber (1981) is a Hungarian sociologist. He earned his MA degrees in sociology and French language and literature at ELTE University (Budapest). He is a doctoral candidate in sociology at ELTE and EHESS (Paris) and is about to defend his PhD thesis on Pierre Bourdieu's 'political turn' at the end of this year. He has also been editor of Replika Hungarian social science quarterly since 2009. His work centers around social theory with a special focus on contemporary French sociology. Agoston Faber is also one of the main Hungarian translators of Pierre Bourdieu's and Luc Boltanski's works. His last paper entitled From false premises to false conclusions. Pierre Bourdieu's 'sociological determinism' was published this year in The American Sociologist.



**10. LÍgia Ferro**, University Institute of Lisbon, Portugal

**Short Biography:** LÍgia Ferro received the Eng. Ant?nio de Almeida / University of Porto Award for the best student graduating in Sociology in 2004. She received her Ph.D. from the University Institute of Lisbon, ISCTE-IUL in 2011. Currently she is an invited assistant professor in the Sociology Department, Faculty of Arts, University of Porto. LÍgia Ferro is the European Sociological Association Research Network 37 - Urban Sociology coordinator and a founder member of the European Network of Observatories in the Fields of Arts and Cultural Education - UNESCO. Since 2016 she is the member of the directive committee of the Portuguese Sociological Association.



**11. Peter Golding**, Northumbria University, United Kingdom

**Short Biography:** Peter Golding is emeritus Professor at Northumbria University and Visiting Professor at Newcastle University, both in the UK. He was previously Pro Vice-Chancellor for Research at Northumbria, and before that at Loughborough, where he had been Head of Social Sciences and Professor of Sociology. He has been a member of the ESA since 1995, and founded its Network on the sociology of media and communication research. Peter is an editor of the European Journal of Communication and an elected member of the Academy of Social Sciences. He was chair of the research assessment panel for his field in the UK in both 2014 and 2008. Peter is a strong supporter of the European Sociological Association, and keen to see specialised fields, like media and communication, retain their connection to primary disciplines, like sociology, and for the cross-national and comparative dimensions of the discipline to continue to receive the vital support of the ESA.



**12. Haldun Güralp**, Global Studies and Class Strategies, Istanbul, Turkey

**Short Biography:** Haldun Güralp retired from teaching in 2015 as Professor of Political Science at Yıldız Technical University and currently chairs the Global Studies and Class Strategies (GSCS) Research Group in Istanbul, Turkey. He holds doctoral degrees in Economics from Ankara University and in Sociology from Binghamton University. Previously, he taught sociology at Hamilton College in New York and at Boğaziçi University in Istanbul. He also held visiting professorships at George Washington University, Northwestern University and UCLA, and was awarded research fellowships at the Woodrow Wilson International Center for Scholars and St. Antony's College of Oxford University. His primary areas of research include social theory, sociology of religion and religious movements, citizenship and secularism. He has been an active member of the ESA since 1999 and of RN29 since 2008, and served on the executive board of the Network (2011-2015). He is also good standing member of Sociological Association in Turkey. Among his many publications is a co-edited book that appeared as no.18 of the Routledge, ESA Series on "Studies in European Societies": Haldun Güralp and Günter Seufert (eds), Religion, Identity and Politics: Germany and Turkey in Interaction, 2013.



**13. Laura Horn**, Roskilde University, Denmark

**Short Biography:** Laura Horn is Associate Professor at the Department of Social Sciences and Business, Roskilde University (Denmark). Her work is focusing on processes of capitalist restructuring in Europe from a critical political economy perspective. She has been a member of RN06 Critical Political Economy since 2005. In 2015-2017, she has been Chair of the Research Network Council, and as such representative of the RNs in the ESA Executive.



**14. Kathrin Komp**, University of Helsinki, Finland

**Short Biography:** Kathrin Komp is assistant professor in Sociology at Helsinki University, Finland. She specializes in country-comparative studies of population ageing, the life-course, welfare states, and social effects of the 2008 economic crisis. She had more than 20 publications up till date, among them several scientific articles and a text book for students. She was a fellow of the "Future Leaders in Ageing Research"-programme 2011-2013, and received a Marie Curie grant in 2015. She currently is chair of the Research Network on Ageing in Europe (RN1) of the European Sociological Association.



**15. Tomáš Kostecký**, Institute of technology, Academy of Sciences, Czech Republic

**Short Biography:** Tomáš Kostecký is the Director of the Institute of Sociology of the Czech Academy of Sciences and a senior researcher in its Department of Local and Regional Studies. He is professionally interested in the analysis of spatial aspects of human behaviour, local, regional, and comparative politics, socio-spatial inequalities and the social and political consequences of metropolisation and suburbanisation. He is the author of a number of books and regularly publishes work in domestic and international journals. He served as the chair of the Local Organizing Committee of 12th ESA Conference in Prague.



**16. Frédéric Lebaron**, Ecole normale supérieure Paris-Saclay, France

**Short Biography:** Frédéric Lebaron has been Professor of Sociology at the Ecole normale supérieure Paris-Saclay (ENS Cachan) since 2016, where he is directing the Department of Social Sciences. Frédéric is presiding the Association Savoir Agir and in 2015 he has been elected President of the French Sociological Association. His research interests are social inequality and stratification, the sociology of the professions and quantitative methods of sociological research. In 2015, he jointly published with Brigitte Le Roux (eds), *La méthodologie de Pierre Bourdieu en action* (Paris: Dunod).



**17. Detlev Lueck**, Federal Institute for Population Research, Wiesbaden, Germany

**Short Biography:** Detlev Lück is a senior researcher at the Federal Institute for Population Research (BiB) in Wiesbaden, Germany. He studied sociology at the University of Bamberg and achieved his doctoral degree at the University of Mainz in 2009. He has worked in Bamberg, Mainz and Wiesbaden as a teacher and researcher in family sociology. Detlev's research interests include fertility, family forms, gender, and cultural conceptions of family. He uses quantitative as well as mixed methods. Detlev is a member of ESA and of RN13 since 2009, a member of the RN13 board since 2011, and vice coordinator of RN13 since 2013.



**18. Monica Massari**, University of Naples Federico II, Italy

**Short Biography:** Monica Massari (1971), Ph.D, is Associate Professor at the Department of Political Sciences of the University of Naples "Federico II" (Italy) where she teaches Sociology. During the past few years she has been focusing on issues related to migration, stereotypes, prejudices and new forms of racism at European level and dynamics of identity and recognition within multi-cultural societies, after several years spent in the analysis of organized crime and illegal markets in the context of globalization. Among her recent publications there is the book *Il corpo degli altri. Migrazioni, memorie, identità* (Orthotes, 2017, forthcoming), and some contributions in edited books and journals such as: *Reconsidering Transnational Organized*



Crime in the Shadow of Globalization: the Case of Human Smuggling across the Mediterranean (Hart Publishing, 2017, forthcoming), La maledizione di essere niente (Milano, 2016), At the Edge of Europe: the Phenomenon of Irregular Migration from Libya to Italy (Palgrave Pivot, 2015), Uno come te. Europei enuovi europei nei percorsi di integrazione (with P. Donadio e G. Gabrielli, Franco Angeli-ISMU 2014), Musulmane e moderne. Spunti di riflessione su donne, islam e costruzioni sociali della modernità in Europa (in Rassegna Italiana di Sociologia, n. 3, 2014).



**19. Gerben Moerman**, University of Amsterdam, Netherlands

**Short Biography:** Gerben Moerman is senior lecturer in Methodology in Sociology at the University of Amsterdam. His expertise lies in the field of qualitative research and mixed methods. Specifically, he researches qualitative interviewing (PhD in 2010) and different forms of qualitative analysis. He has been active as vice-chair (2013-2015) and chair (2015-2017) of RN20 on qualitative methods. Gerben has a passion for teaching. He has taught many courses on sociological methods on various levels. He has been the chair of the program committee in for the Bachelor and Master since 2012. He was awarded UvA Lecturer of the year 2011.



**20. Adam Mrozowicki**, University of Wroclaw PL, Poland

**Short Biography:** Dr hab. Adam Mrozowicki, sociologist, PhD in social sciences (Catholic University of Leuven, 2009), habilitation in sociology (University of Wroclaw, 2016), since 2009 employed at the Institute of Sociology, University of Wroclaw. His academic interests concern the sociology of work, comparative industrial relations, biographical research methodology and critical social realism. He heads the Sociology of Work Section of the Polish Sociological Association (2013-2019) and he is vice-president of the Research Committee 44 "Labour Movements" of the International Sociological Association. The author of "Coping with Social Change. Life strategies of workers in Poland's New Capitalism" (LUP 2011) and over 80 articles, book chapters, reviews and reports.



**21. Lena Näre**, University of Helsinki, Finland

**Short Biography:** Lena Näre is Associate Professor of Sociology (tenure track) at the University of Helsinki, Finland. She holds a DPhil in Migration Studies from the University of Sussex and a PhD in Sociology from the University of Helsinki. Her research focuses on migration, gender, work (especially care work) and ageing. Her work has been published e.g. in Sociology, Ethnic and Racial Studies, Men and Masculinities, Journal of Ethnic and Migration Studies. Recent publications include Transnational Migration and Home in Older Age (2016) co-edited with Katie Walsh for Routledge. She is the Editor-in-Chief with Synnøve Bendixsen of Nordic Journal of Migration Research.



**22. Eleni Nina-Pazarzi**, University of Piraeus, Greece

**Short Biography:** Professor Emerita of Sociology, University of Piraeus. Member of Athens Bar Association. President of TADKY[1996-2002]. I've been Coordinator and Main researcher in European and National research programs: Indicatively, project manager of the EU program "E-medi@te Justice", Institutional and Academic Coordinator of EPEAEK "Gender Equality and Employment", and coordinator of ARTEMIS-EQUAL. Teaching Experience in Graduate, post-graduate programs: Sociology, Industrial Sociology, Social Psychology, Industrial Relations, Courses on Gender Equality, Maritime Sociology, Business Social Responsibility, Business Corporate Responsibility and Corporate Governance, Socio-psychological Theories of Financial Behavior etc. Author and/or Editor of 12 books and about 70 articles, essays on Sociological Theory, Gender, Economic Sociology, Sociology of Work and Sociology of Organizations etc. Vice President of ESA and ELEGYP, Treasurer of ISA, RC10. I've been co-founder, Board Member and co-chair of RN27 (2015-2017). President of the Hellenic Sociological Society and Board Member of Professional associations. I've organized several workshops and conferences. I intend to contribute to the further success of ESA and to spare no efforts to recruit young qualified colleagues.



**23. Patrick O'Mahony**, National University of Ireland, Cork

**Short biography:** Dr. Patrick O'Mahony is Senior Lecturer at the National University of Ireland, Cork (UCC) and recently published *The Contemporary Theory of the Public Sphere*. He is a theoretical and methodological pluralist with particular concern for innovative application. Sociological interests include general theory, methodology, discourse, critical theory and critical sociology, new social movements, science and technology, economic sociology, law and democracy and interdisciplinary. He serves on the Editorial Board of the European Journal of Social Theory and reviews for many journals. He has been principal investigator and evaluator of projects on many EU social research programmes. He has been Director of the *Centre for European Social Research* at UCC. His goal for the ESA is to improve academic conditions for geographical and social peripheries.



**24. Apostolos G. Papadopoulos**, Harokopio University, Greece

**Short Biography:** Apostolos G. Papadopoulos is Professor of Rural Sociology and Geography at the Department of Geography, Harokopio University (Athens, Greece). He has served as Director of Postgraduate Studies in his Department (2009-2011) and as an elected Vice-Rector of Economic Affairs and Development (2011-2015) at his University. His research is focused on the factors and mechanisms related to rural transformation, social change, social class and social mobility. He is also interested on the impact of migration on host societies, while recently he became interested on the asymmetries between social transformation and migration processes at various spatial scales. He has (co)edited/ written

seven books, while he has over 100 publications, including refereed papers and book chapters. He is particularly interested in applied social research and recently he was appointed as member of the CIHEAM Advisory Board (2017-2020), focusing especially on research, education and rural development in the Mediterranean countries. He is Chair of the Hellenic Sociological Society (HSS) and Chair of the LOC for the 13th ESA Congress in Athens.



**25. Roland Pfefferkorn**, University of Strasbourg, France

**Short Biography:** Roland Pfefferkorn is Professor of Sociology at the University of Strasbourg (France) where he is teaching since about 25 years. His research focuses on social inequalities (inequalities between classes, between men and women, between the generations and also on ethnic-racial inequalities) and social relations, particularly gender relations. His further interests are indicated by his publications on the sociology of work, economic sociology, regional sociology (religion and languages) as well as the epistemology and history of sociology. At ESA 2017, together with Konstantin Minoski, he jointly organises the Research Stream on "100 Years Charles Wright Mills".



**26. Marta Soler-Gallart**, University of Barcelona, Spain

**Short Biography:** Marta Soler-Gallart, Harvard PhD, is Professor of Sociology and Director of CREA Research Centre at the University of Barcelona. She is member of the ESA Executive Committee and Chair of the ESA RN29 "Social Theory". She is also Vice-President of the Catalan Sociological Association and Governing Board member of the European Alliance for Social Sciences and Humanities. Involved as well in the ISA, as the Editor of "International Sociology". Main Researcher of the H2020 project SOLIDUS and Knowledge Management Coordinator of the FP7 project IMPACT-EV. She has published her research in journals such as "Current Sociology", "Qualitative Inquiry" and "Nature".



**27. Karin Stögner**, University of Vienna, Austria

**Short Biography:** Karin Stögner, PhD, studied sociology and history in Vienna and Paris and is currently lecturer at the Department of Sociology, University of Vienna. During 2009-2011 she was Marie Curie Fellow at Central European University, Budapest; during 2013-2014 Erwin Schrödinger-Fellow at Lancaster University and at Georgetown University, Washington, DC; in 2017 research fellow at the University of Haifa. Main research topics include: social theory (especially critical theory and feminist theory), intersectionality, research in antisemitism, nationalism, racism and sexism. Karin is currently Chair of the RN31 Ethnic Relations, Racism, and Antisemitism.



**28. Gallina Tasheva**, University of Muenster, Germany

**Short Biography:** Gallina Tasheva is a German-Bulgarian Sociologist. She obtained her doctoral degree in Sofia and after carrying out her post-doctoral research at the University of Bielefeld, she has been working at the Universities of Bielefeld, Kassel, and Jena before moving to the University of Muenster, Germany. In ESA, she coordinated the ESA Research Network on Social Theory (2013-2015). Her work centres around social theory, theoretical sociology and qualitative empirical research, especially phenomenology, existential hermeneutics and critical studies, with an emphasis on value conflicts and identity, intersubjectivity, alterity, and hospitality. Recently her efforts have been going into the development of European Studies (*The Battlefield of European Identity*, Routledge, 2018, co-ed. with F. Welz).

## List of Candidates for the Chair of the Council of Research Networks



### 1. **Teresa Carvalho**, University of Aveiro, Portugal

**Short Biography:** Teresa Carvalho is Professor at the University of Aveiro, in Portugal. She is a senior researcher at CIPES (Center for Research in Higher Education Policies). She is also a member of the CIPES board and of the executive board of the Department of Social, Political and Territorial Sciences at the University of Aveiro. She is the Director of the PhD program in Public Policies and vice-director of the Master program in Public Administration and Management at the University of Aveiro. She is the Director of the research network WHEM (Women in Higher Education Management). Her main research interests are related with New Public Management and managerialism impact on professional groups. The main focus of her current research is the relation between managerialism and academic professionalism with an emphasis on gender issues. She has published research on these issues both in books, book chapters and scientific journals. Since 2013 she has been the chair of the European Sociological Association Research Network on Professions (RN19), and a member of the executive board of the International Sociological Association Research Committee on Professional Groups (RC 52). Her main intent is to contribute to the continuous and sustained growth of all ESA networks by assuming the voice and exposing the interests of the networks in ESA executive board.

## List of Candidates for the Chair of the Council of National Associations



### 1. Sokratis Koniordos, University of Crete, Greece

**Short Biography:** Sokratis Koniordos (BA, Deree & Panteion, MA Kent, PhD LSE) is Full Professor at the University of Crete. Has also taught at the following universities: Middlesex, Quest-Nanterre-Paris 8, Cyprus, Milan-Bicocca, Open, Thessaloniki, and HOU. Main research interests include: economic sociology, sociology of work, migration, modernity, civil society. Koniordos' has published 18 volumes; for instance, *The Handbook of European Sociology*, New York and London, Routledge, 2014 (with A. A. Kyrtis); *Conflict, Citizenship and Civil Society*, London: Routledge, 2010 (with P. Baert, G. Procacci and C. Ruzza); *Towards a Sociology of Artisans: Continuity and Discontinuities in Comparative Perspectives*, Aldershot: Ashgate, 2001.



### 2. Linda McKie, University of Edinburgh, UK

**Short Biography:** Linda McKie is Professor of Sociology and Social Policy, Dean/Head of School for the School of Social and Political Sciences at the University of Edinburgh. She joined Edinburgh in August of this year after completing five years at the University of Durham where she was also Head of School. Linda has over 25 years of experience in academic research, teaching and administration. She is a sociologist with a strong track record in publishing, securing external grant income, project management, and career development and mentoring. Activities to support the development of the next generation (journal writing and mentoring work) and the future of the discipline (professoriate and learned society networking) are central to her sociological vision. Active in the development and promotion of social sciences across all sectors of the economy and with a range of communities and organisations, she also has strong collaborations in Finland and across a range of universities. Over the course of her career she has been elected to serve as a trustee on the board of the British Sociological Association (BSA) on three occasions and she is currently the BSA's Director of Public Engagement.

## INDEX

You can access and search the index of all presenters and session chairs through the online conference agenda in ConfTool.

The direct link is the following:

<https://www.conftool.pro/esa2017/index.php?page=browseSessions&mode=authors>























A series of horizontal dotted lines for writing, spanning the width of the page.

# Kalinga Institute of Social Sciences KISS

**HOME FOR 25,000 INDIGENOUS CHILDREN**



Organisation in Special Consultative Status with  
the United Nations Economic & Social Council (UN-ECOSOC)  
Associated with the United Nations Department of Public Information (UNDPI)



**Kalinga Institute of Social Sciences (KISS)**, a protégé of KIIT University, was recently accorded **Special Consultative Status by the United Nations Economic and Social Council (UN-ECOSOC)** and associated with the **United Nations Department of Public Information (UN-DPI)** and has been working relentlessly for the upliftment of the indigenous community (known as tribal in India) by empowering them through education. **At present 25,000 poor Indigenous children are provided with food, accommodation and healthcare absolutely free to pursue their education from Kindergarten to Post Graduation, all under one roof.** They are prepared here to be the change agents in their respective communities. Several schemes at KISS like 'earn while you learn' focusing on vocational training along with education for a sustainable livelihood, jobs after completion of education, excellent sporting facilities and top class coaching have helped these tribal children and youth to excel. World class bodies like UNFPA, UNICEF, UNESCO, US Federal Government, Australian Embassy, British Council, Oracle Giving and Bernard van Leer Foundation are associated with KISS in various projects.

Giving education to the deprived  
is like giving sight to the blind.

--Achyuta Samanta

[www.achyutasamanta.com](http://www.achyutasamanta.com), [facebook.com/dr.a.samanta](https://facebook.com/dr.a.samanta)

Bhubaneswar- 751024, Odisha, India

Telefax: +91 674 2725386, Website: [www.kiss.ac.in](http://www.kiss.ac.in), Email: [info@kiss.ac.in](mailto:info@kiss.ac.in)